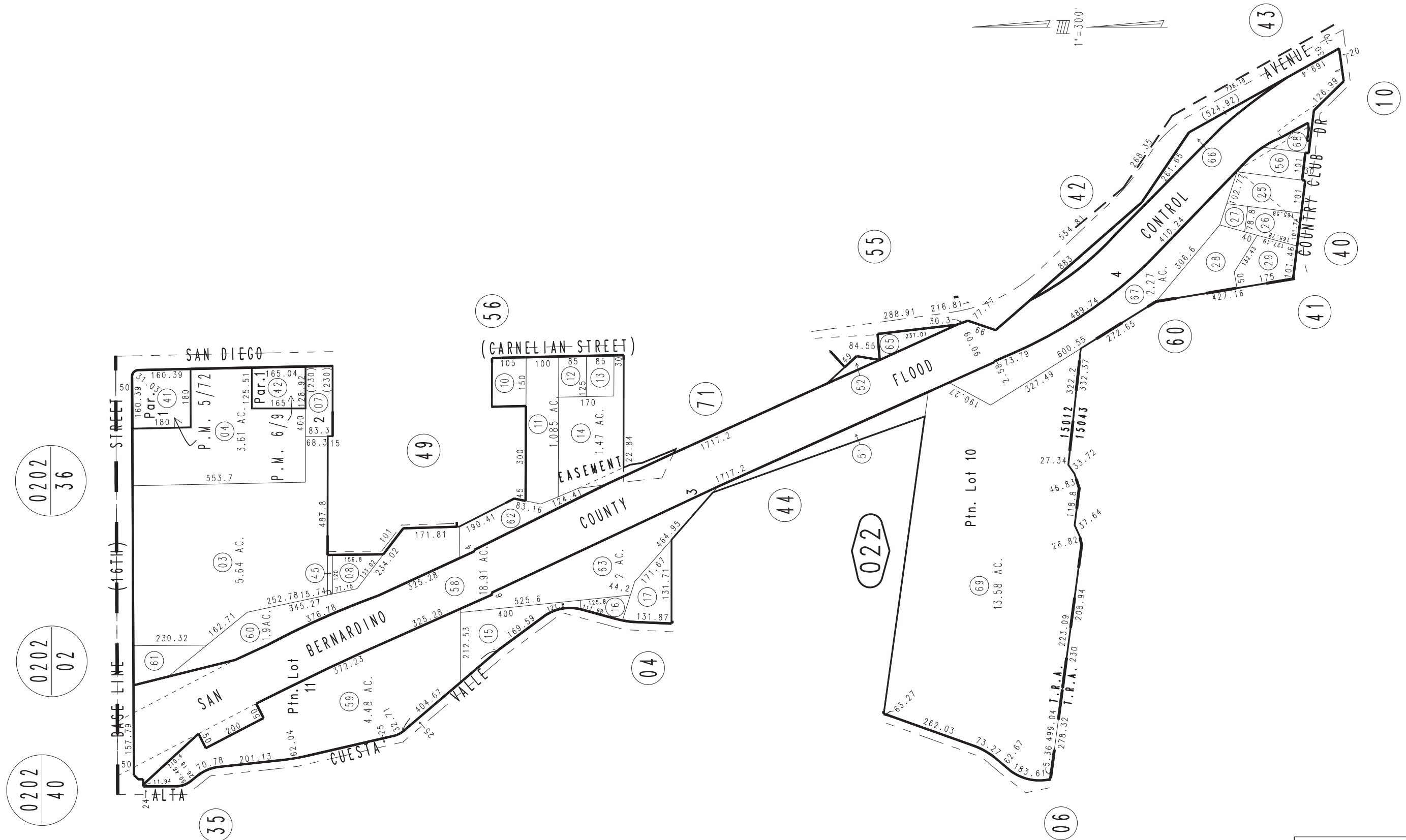


THIS MAP IS FOR THE PURPOSE OF AD VALOREM TAXATION ONLY.



Ptn. Red Hill Sub., M.B. 21/33

City of Rancho Cucamonga 0207-02
Tax Rate Area
15012,15043



July 2004

Parcel Map No. 653, P.M. 6/9
Parcel Map No. 319, P.M. 5/72

Ptn. N.E.1/4, Sec. 4
T.1S., R.7W.

Assessor's Map
Book 0207 Page 02
San Bernardino County

REVISED
12/27/10 GW
04/18/11 KC
02/02/12 KA
10/30/12 RU-MC