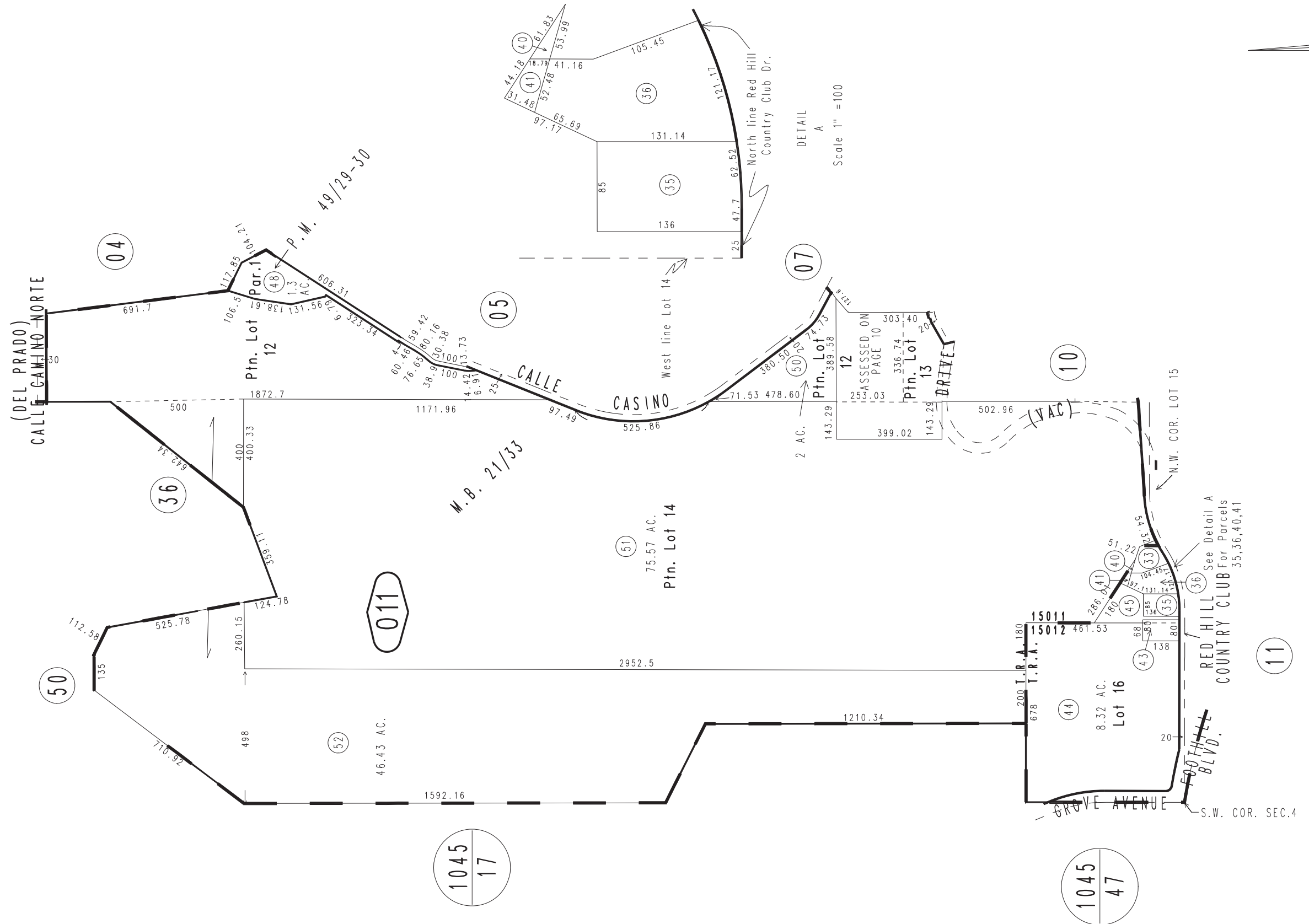
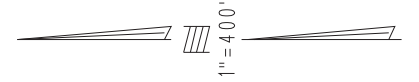


THIS MAP IS FOR THE PURPOSE OF AD VALOREM TAXATION ONLY.

Ptn. W.1/2 Sec.4, T.1S.,R7W., S.B.B.&M.

City of Rancho Cucamonga 0207-01
Tax Rate Area
15011,15012



July 2004

Ptn. Parcel Map No. 4908, P.M. 49/29-30
Ptn. Red Hill Sub., M.B. 21/33

Assessor's Map
Book 0207 Page 01
San Bernardino County

REVISED
12/21/09 GW
02/05/10 RU