

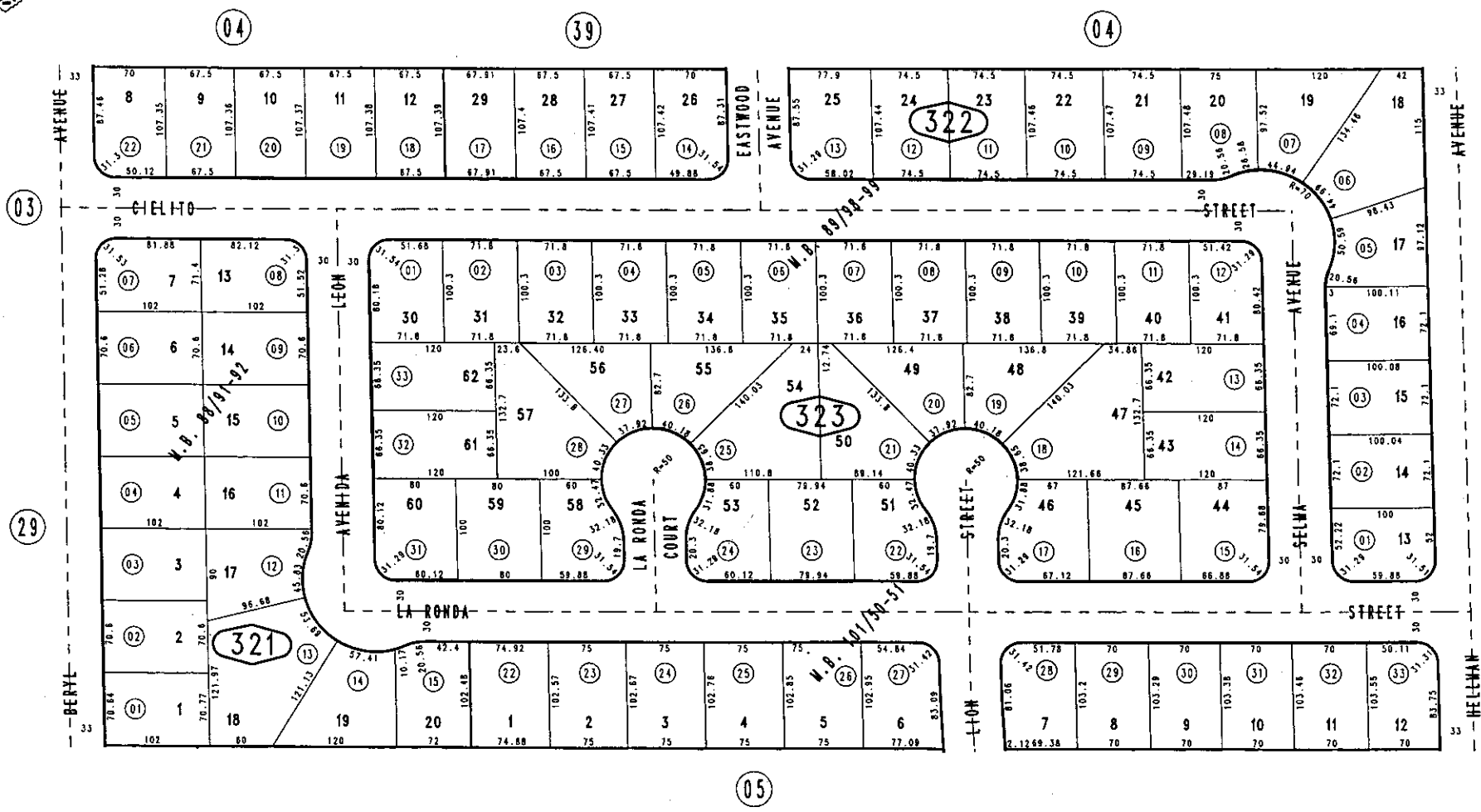
THIS MAP IS FOR THE PURPOSE OF AD VALOREM TAXATION ONLY.

Tract No. 6999, M.B. 89/98-99 Amended, M.B. 101/50-51

City of Rancho Cucamonga 0202-32
Tax Rate Area
15004



1" = 100'



July 2004

Tract No. 4927, M.B. 88/91-92

Assessor's Map
Book 0202 Page 32
San Bernardino County

REVISED