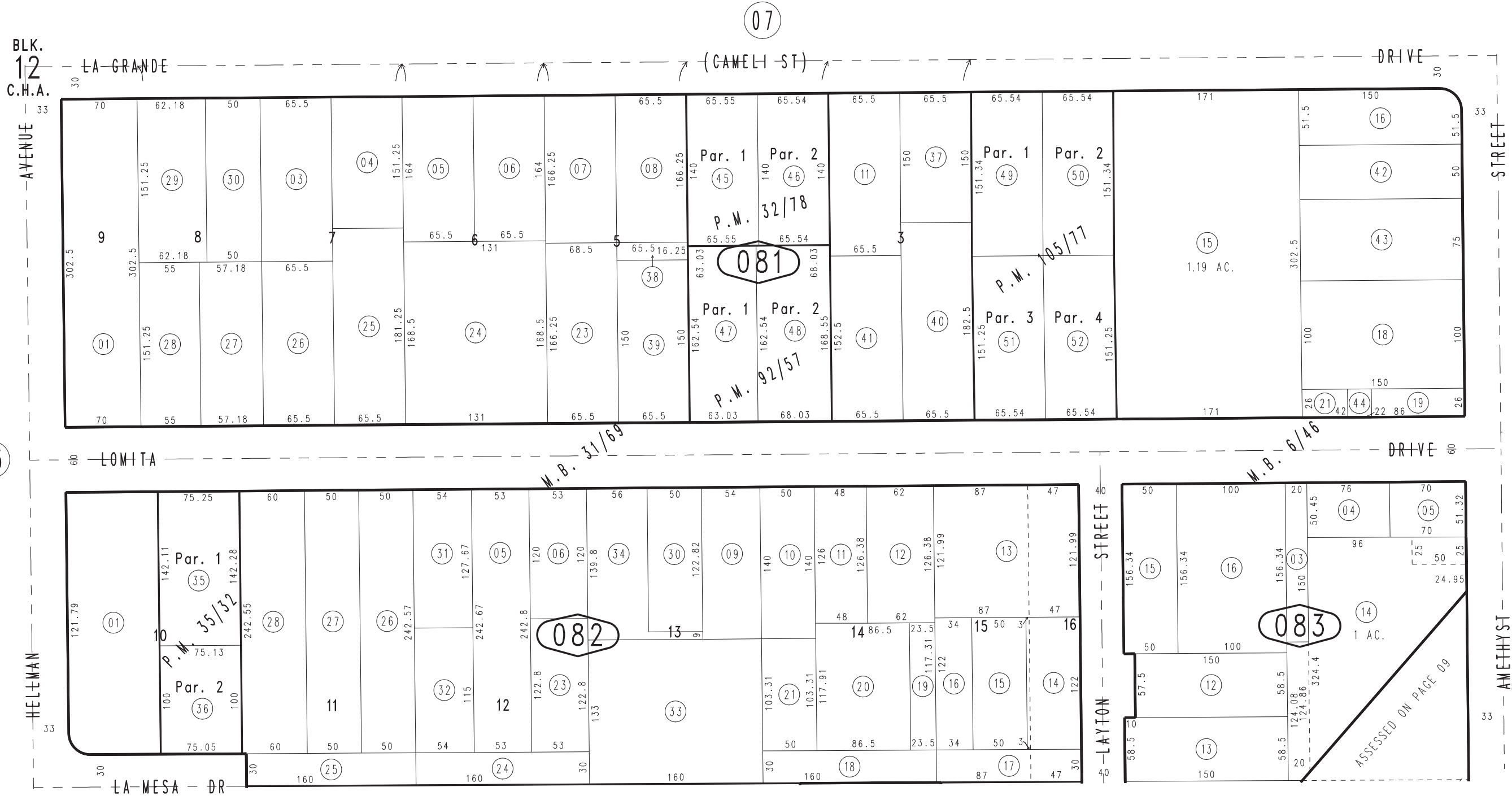


THIS MAP IS FOR THE PURPOSE OF AD VALOREM TAXATION ONLY.

Ptn. Cucamonga Homestead Association, M.B. 6/46

City of Rancho Cucamonga 0202-08
Tax Rate Area
15004



Parcel Map No. 7441, P.M. 105/77
 Parcel Map No. 8477, P.M. 92/57
 Parcel Map No. 3519, P.M. 35/32
 Parcel Map No. 3570, P.M. 32/78
 Lomita Heights, Tract No. 2190, M.B. 31/69

July 2004

Assessor's Map
 Book 0202 Page 08
 San Bernardino County

REVISED
 10/07/13 RM-MC