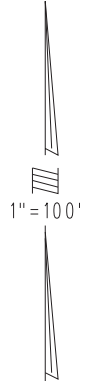
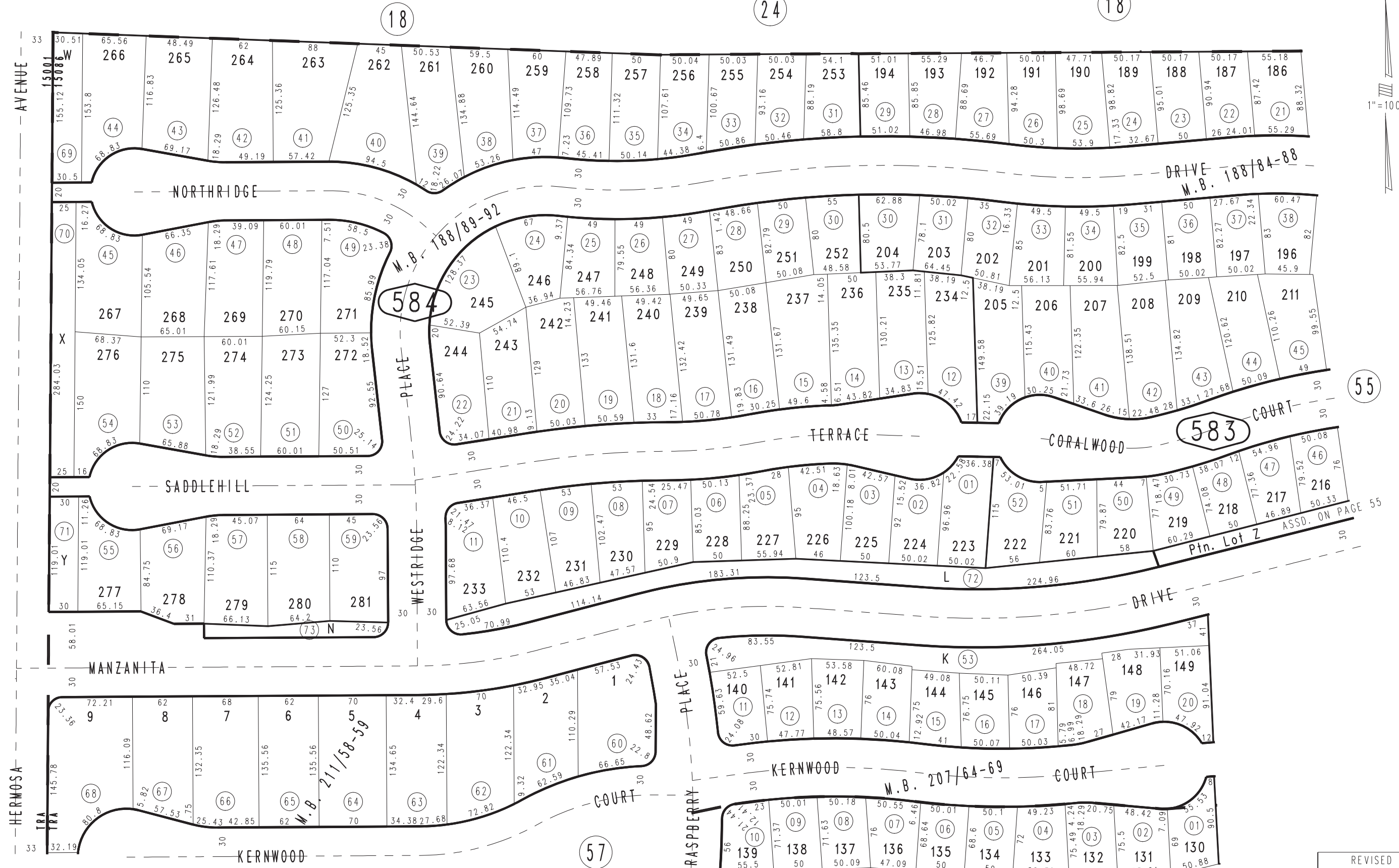


THIS MAP IS FOR THE PURPOSE OF AD VALOREM TAXATION ONLY.

Ptn. Tract No. 10827-2, M.B. 188/79-83
Amending Map, M.B. 207/64-69

City of Rancho Cucamonga 0201-58
Tax Rate Area
15001 15086



Ptn. Tract No. 13318, M.B. 211/58-59
Tract No. 10827, M.B. 188/89-92
Ptn. Tract No. 10827-3, M.B. 188/84-88

Ptn. N.E.1/4, Sec.26
T.1N.,R.7W.

Assessor's Map
Book 0201 Page 58
San Bernardino County