

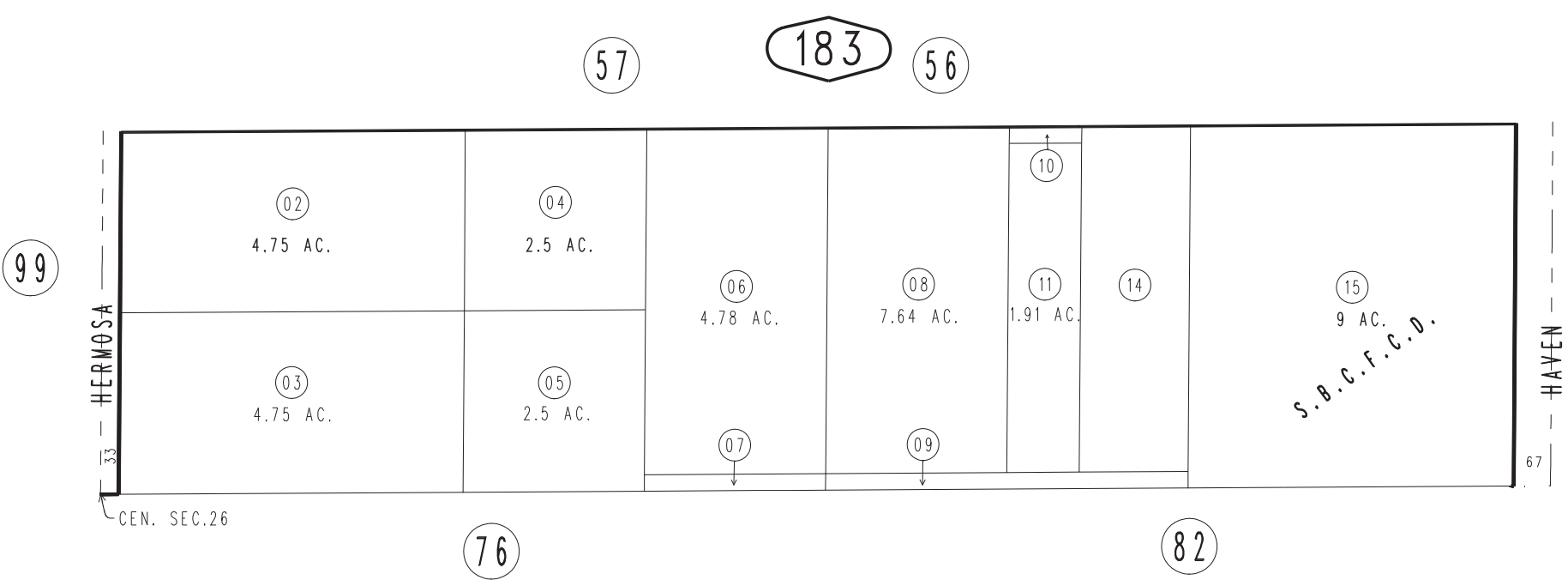
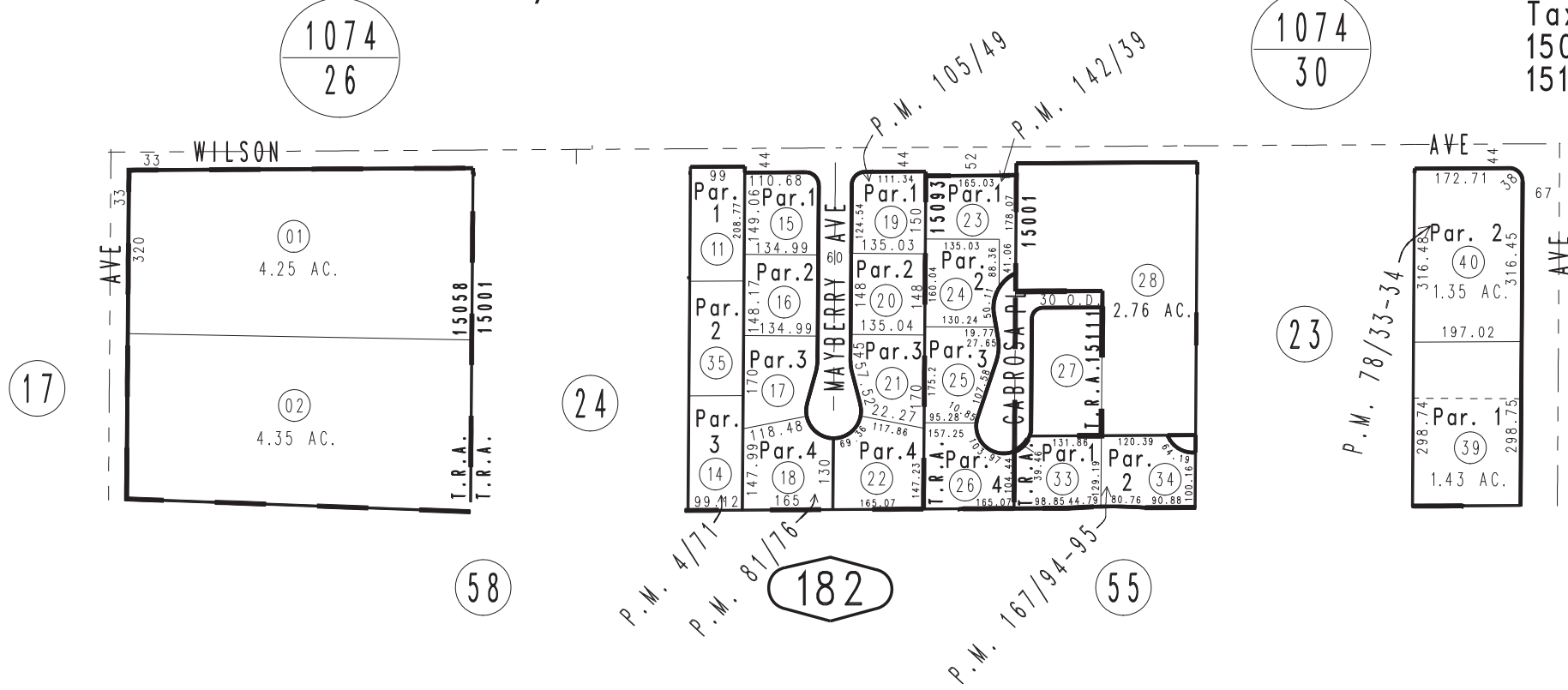
THIS MAP IS FOR THE PURPOSE OF AD VALOREM TAXATION ONLY.



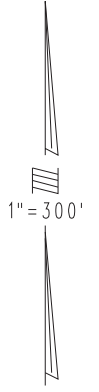
Ptn. N.E.1/4, Sec.26, T.1N.,R.7W., S.B.B.&M.

City of Rancho Cucamonga  
Tax Rate Area  
15001,15058,15093  
15111

0201 - 18



- Parcel Map No. 5996, P.M. 142/39
- Parcel Map No. 7902, P.M. 105/49
- Parcel Map No. 5795, P.M. 81/76
- Parcel Map No. 7451, P.M. 78/33-34
- Parcel Map No. 475, P.M. 4/71
- Parcel Map No. 13692, P.M. 167/94-95



REVISED  
03/06/18 GW  
09/12/18 KA  
09/17/18 KA