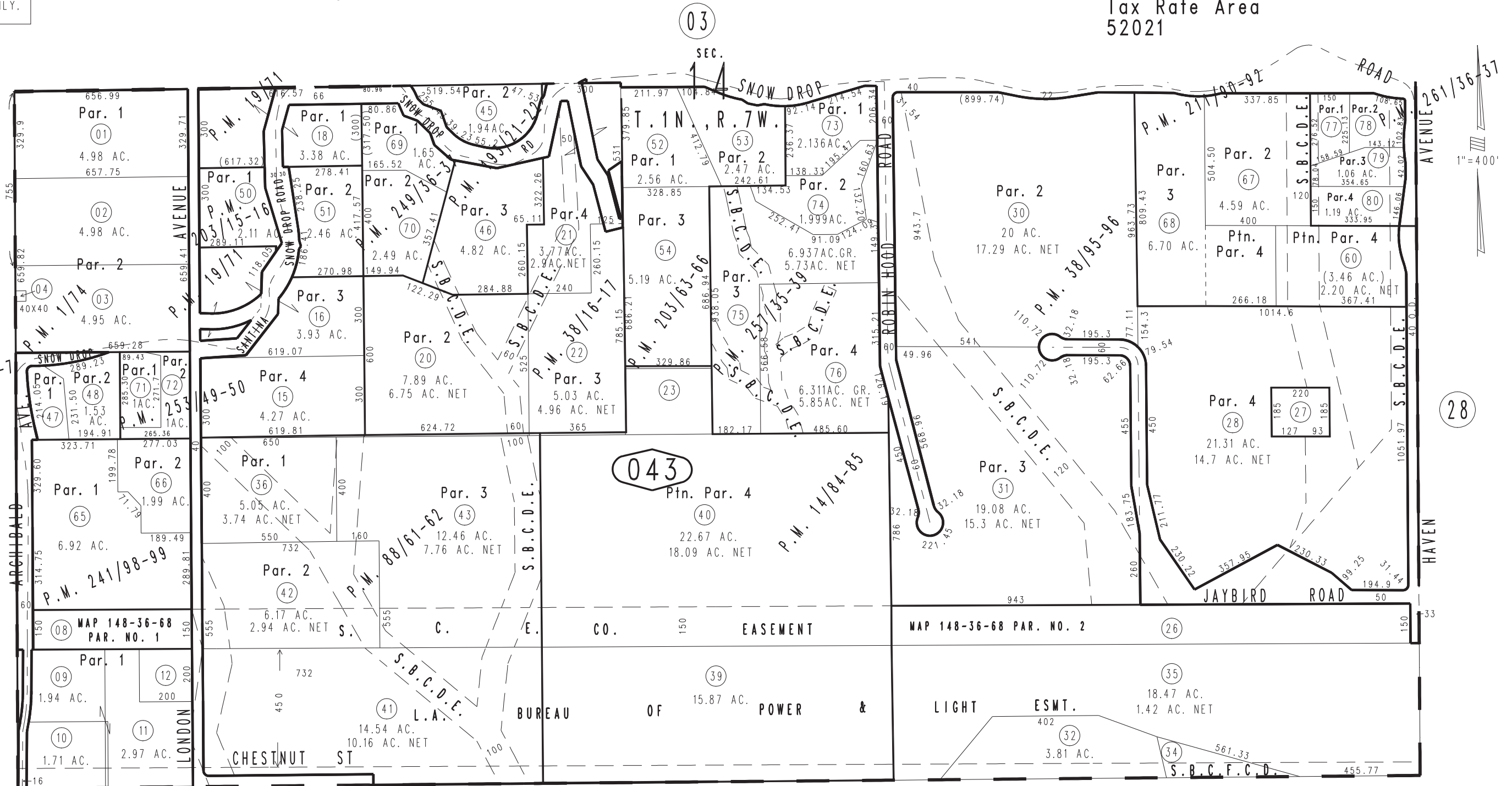


THIS MAP IS FOR THE PURPOSE OF AD VALOREM TAXATION ONLY.

S.1/2, Sec.14, T.1N.,R.7W., S.B.B.&M.

Alta Loma
Tax Rate Area
52021

0201 - 04



1074
46

1074
59

1074
04

1074
05

1074
08

1074
01

- Parcel Map No. 7023, P.M. 88/61-62
- Ptn. Parcel Map No. 3915, P.M. 38/95-96
- Ptn. Parcel Map No. 4017, P.M. 38/16-17
- Parcel Map No. 2280, P.M. 19/71
- Ptn. Parcel Map No. 1620, P.M. 14/84-85
- Ptn. Parcel Map No. 75, P.M. 1/74
- Parcel Map No. 5, P.M. 1/72
- Parcel Map No. 19466, P.M. 249/36-37
- Parcel Map No. 19308, P.M. 241/98-99
- Ptn. Parcel Map No. 15821, P.M. 211/90-92
- Parcel Map No. 15895, P.M. 203/63-66
- Parcel Map No. 15712, P.M. 203/15-16
- Parcel Map No. 15952, P.M. 203/5-7
- Parcel Map No. 15218, P.M. 193/21-22
- Parcel Map No. 20121, P.M. 261/36-37
- Parcel Map No. 18936, P.M. 257/35-39
- Parcel Map No. 19326, P.M. 253/49-50

July 2004

Assessor's Map
Book 0201 Page 04
San Bernardino County

REVISED
11/02/21 KC
02/01/23 GW
03/02/23 JH
07/27/23 KA
12/22/23 KC