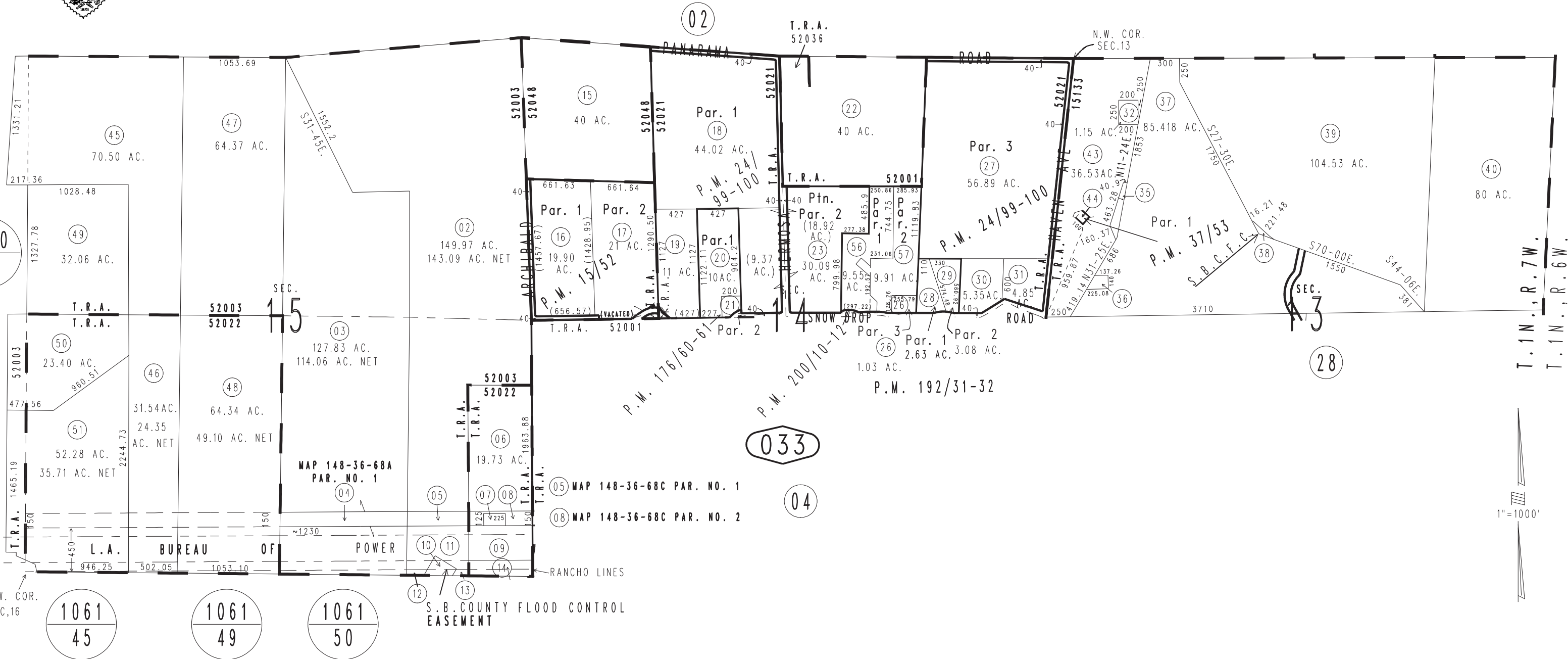


THIS MAP IS FOR THE PURPOSE OF AD VALOREM TAXATION ONLY.

N.1/2, Sec.13&14, & Sec.15, T.1N.,R.7W., S.B.B.&M.

Alta Loma
Tax Rate Area
15133 52003 52021
52022 52001
52036 52046

0201 - 03



Parcel Map No. 15746, P.M. 200/10-12
Parcel Map No. 15300, P.M. 192/31-32
Parcel Map No. 14243, P.M. 176/60-61
Parcel Map No. 4203, P.M. 37/53
Ptn. Parcel Map No. 2840, P.M. 24/99-100
Parcel Map No. 1761, P.M. 15/52

July 2004

Assessor's Map
Book 0201 Page 03
San Bernardino County

REVISED
11/03/21 KC
02/10/22 GW-MC
05/02/23 KA
05/16/23 KA