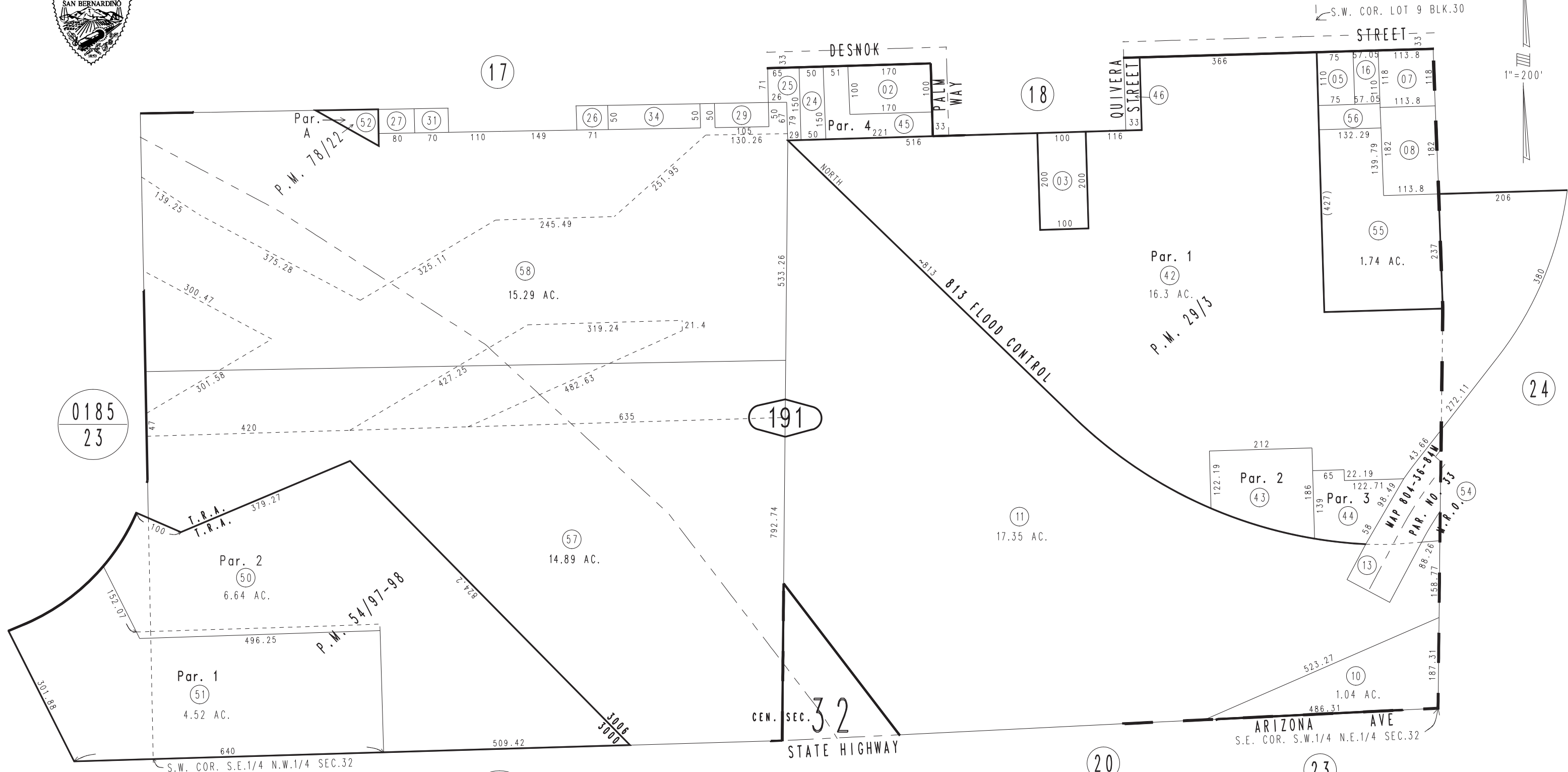


THIS MAP IS FOR THE PURPOSE OF AD VALOREM TAXATION ONLY.

Ptn. N.1/2 Sec.32, T.9N., R.23E., S.B.B.&M.

City of Needles
Tax Rate Area
3000 3006

0186 - 19



0185
23

0185
23

Parcel Map No. 6759, P.M. 78/22
Parcel Map No. 5762, P.M. 54/97-98
Parcel Map No. 3262, P.M. 29/3

May 2005

Assessor's Map
Book 0186 Page 19
San Bernardino County

REVISED
06/23/17 KC
11/15/17 KC
03/19/19 GW