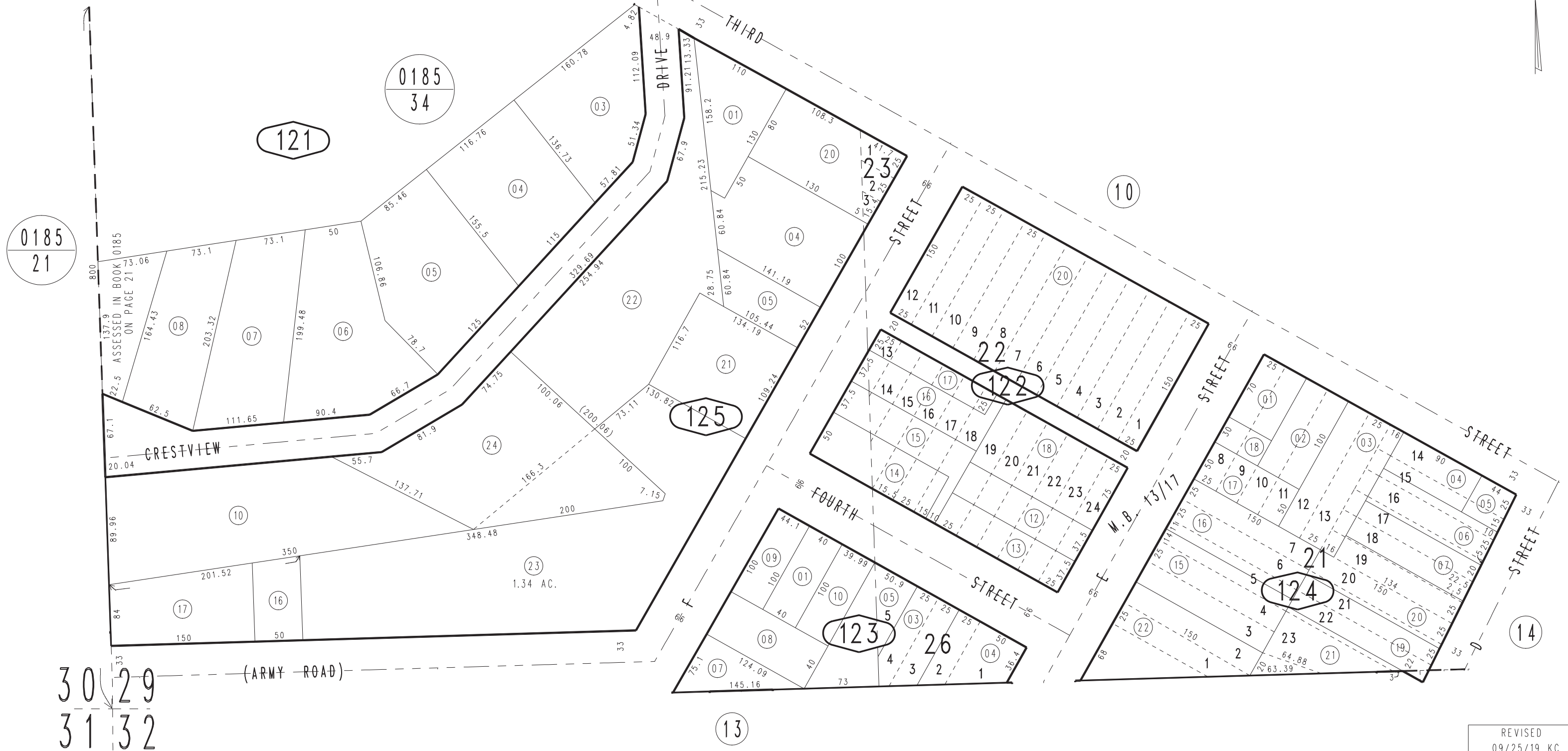


THIS MAP IS FOR THE PURPOSE
OF AD VALOREM TAXATION ONLY.

Ptn. S.W.1/4 Sec.29, T.9N., R.23E., S.B.B.&M.

City of Needles
Tax Rate Area
3006

0186 - 12



May 2005

Ptn. Parcel Map No. 3569, P.M. 33/80
Ptn. Mc Williams Survey, M.B. 13/17

Assessor's Map
Book 0186 Page 12
San Bernardino County

REVISED
09/25/19 KC