

THIS MAP IS FOR THE PURPOSE
OF AD VALOREM TAXATION ONLY.

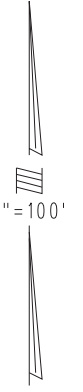
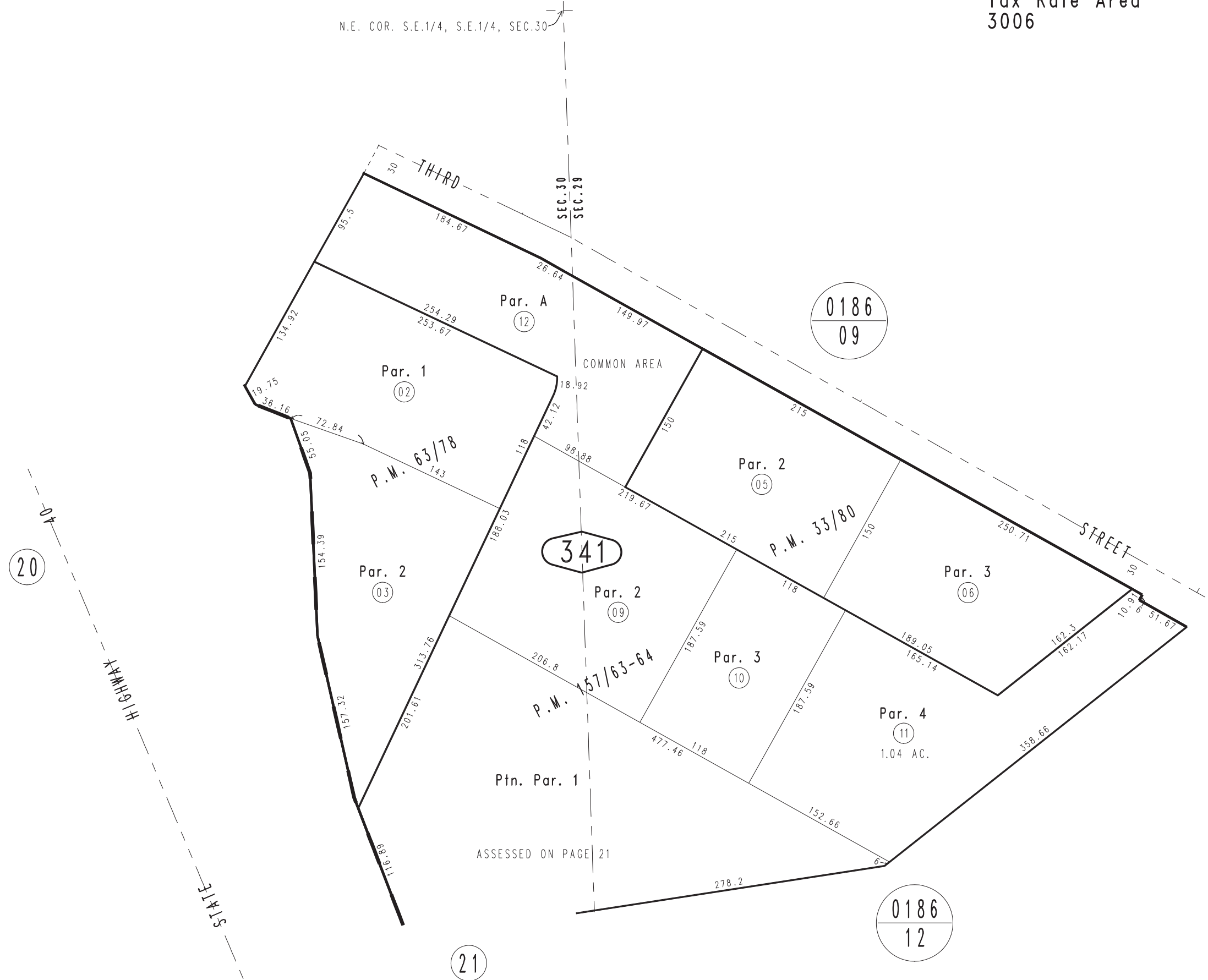


Ptn. Sec.30, & Ptn. Sec.29, T.9N.,R.23E., S.B.B.&M.

City of Needles
Tax Rate Area
3006

0185 - 34

N.E. COR. S.E.1/4, S.E.1/4, SEC.30



Ptn. Parcel Map No. 13813, P.M. 157/63-64
Ptn. Parcel Map No. 6648, P.M. 63/78
Ptn. Parcel Map No. 3569, P.M. 33/80

May 2005

Assessor's Map
Book 0185 Page 34
San Bernardino County

REVISED
01/04/10 LH
04/18/12 RU