

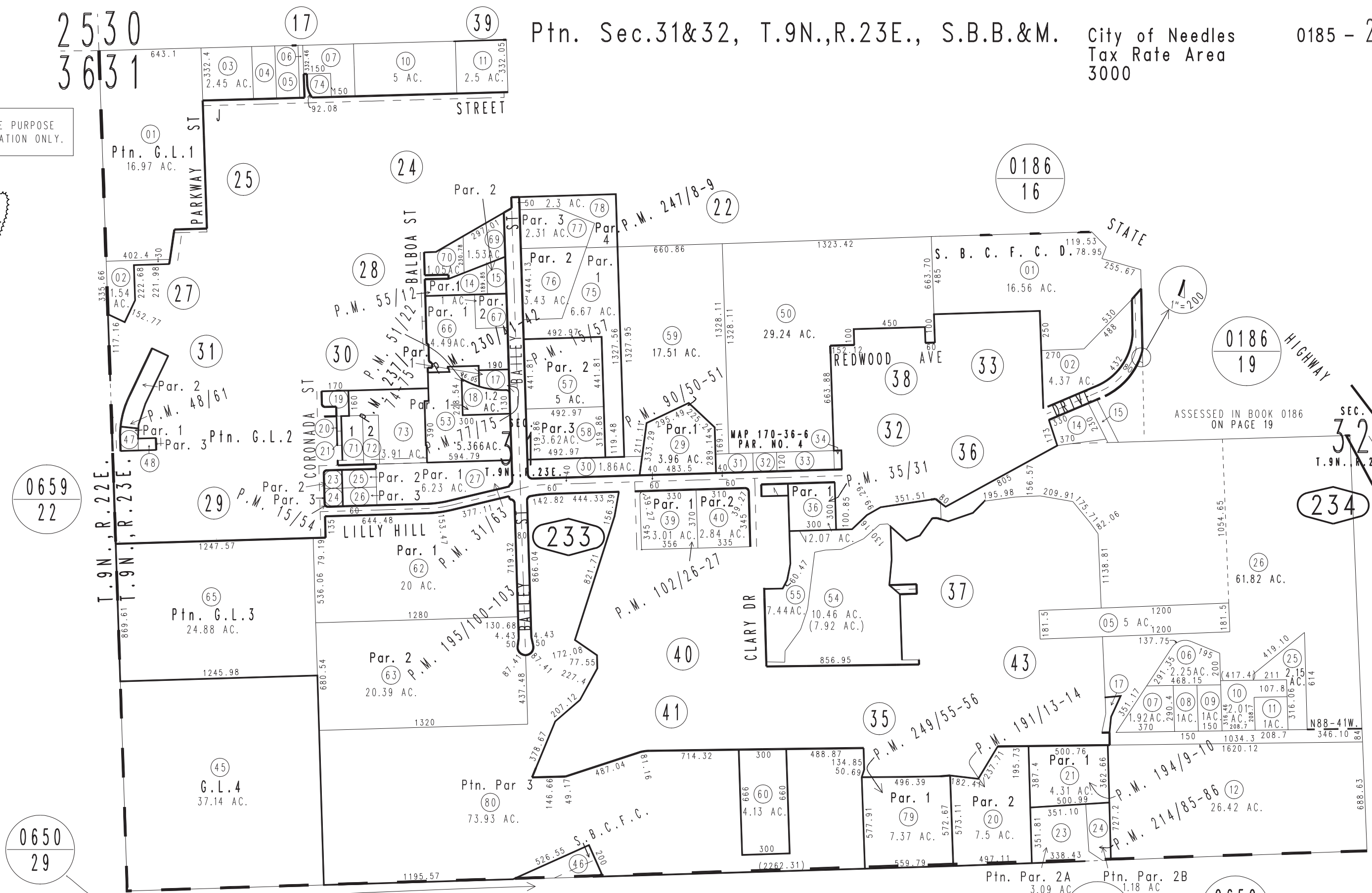
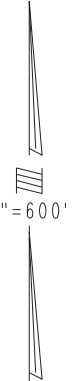
2530  
3631

Ptn. Sec.31&32, T.9N.,R.23E., S.B.B.&M. City of Needles

0185 - 23

Tax Rate Area  
3000

THIS MAP IS FOR THE PURPOSE  
OF AD VALOREM TAXATION ONLY.



0659  
22

0650  
29

0186  
16

0186  
19

0186  
20

0186  
21

0186  
22

0650  
32

0650  
42

- Parcel Map No. 5366, P.M. 51/22
- Ptn. Parcel Map No. 4764, P.M. 48/61
- Parcel Map No. 3910, P.M. 35/31
- Ptn. Parcel Map No. 3263, P.M. 31/63
- Ptn. Parcel Map No. 1872, P.M. 15/57
- Parcel Map No. 1793, P.M. 15/54
- Ptn. Parcel Map No. 15672, P.M. 194/9-10
- Ptn. Parcel Map No. 15527, P.M. 191/13-14
- Ptn. Parcel Map No. 9698, P.M. 102/26-27
- Parcel Map No. 8640, P.M. 90/50-51
- Parcel Map No. 7632, P.M. 77/75
- Parcel Map No. 4521, P.M. 55/12
- Parcel Map No. 19854, P.M. 249/55-56
- Parcel Map No. 19381, P.M. 247/8-9
- Parcel Map No. 19304, P.M. 237/74-75
- Parcel Map No. 18984, P.M. 230/41-42
- Ptn. Parcel Map No. 17026, P.M. 214/85-86
- Ptn. Parcel Map No. 15679, P.M. 195/100-103
- Parcel Map No. 19381, P.M. 247/8-9
- Parcel Map No. 19304, P.M. 237/74-75
- Parcel Map No. 18984, P.M. 230/41-42
- Ptn. Parcel Map No. 17026, P.M. 214/85-86
- Ptn. Parcel Map No. 15679, P.M. 195/100-103

Assessor's Map  
Book 0185 Page 23  
San Bernardino County

REVISED  
04/07/21 GW