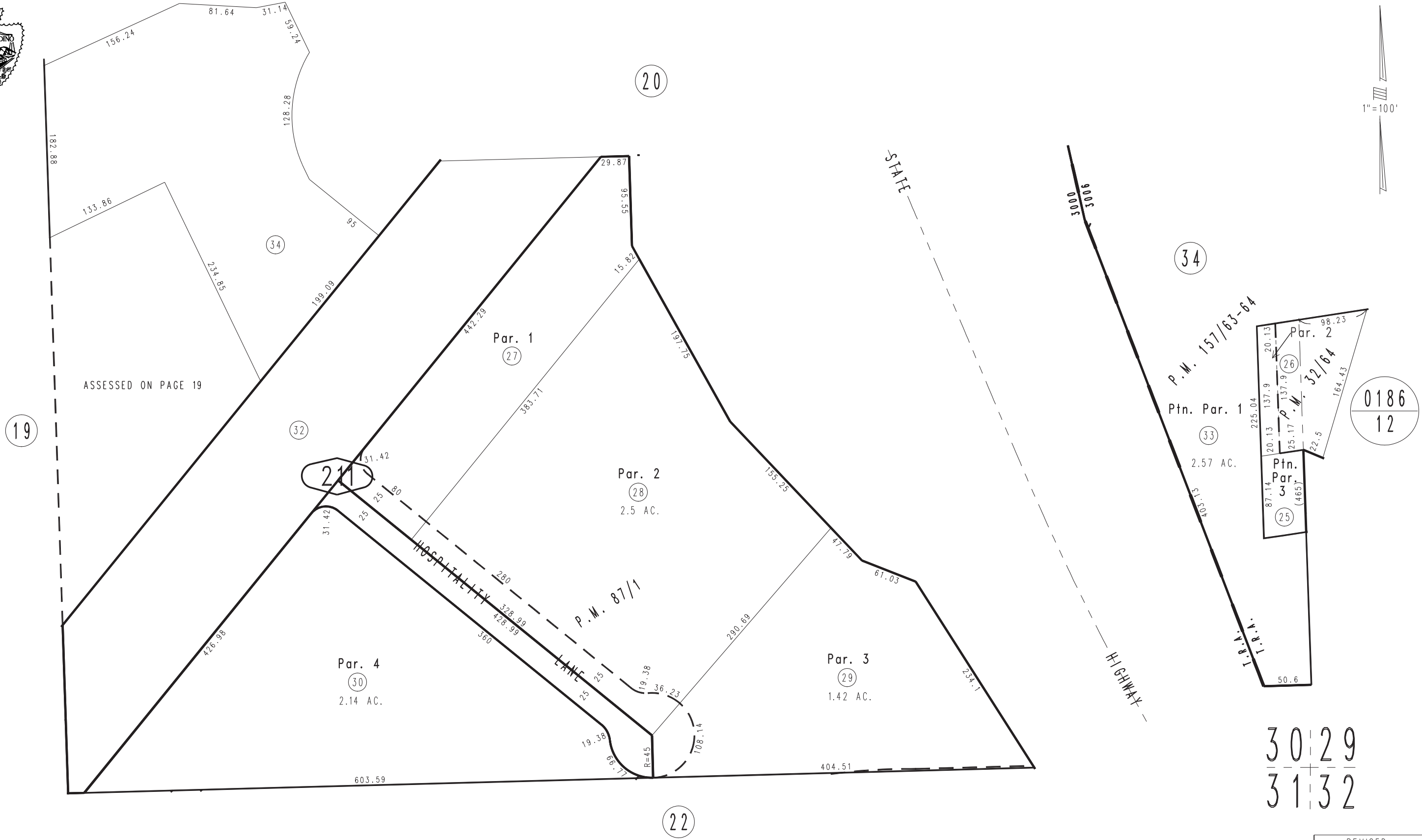


THIS MAP IS FOR THE PURPOSE
OF AD VALOREM TAXATION ONLY.

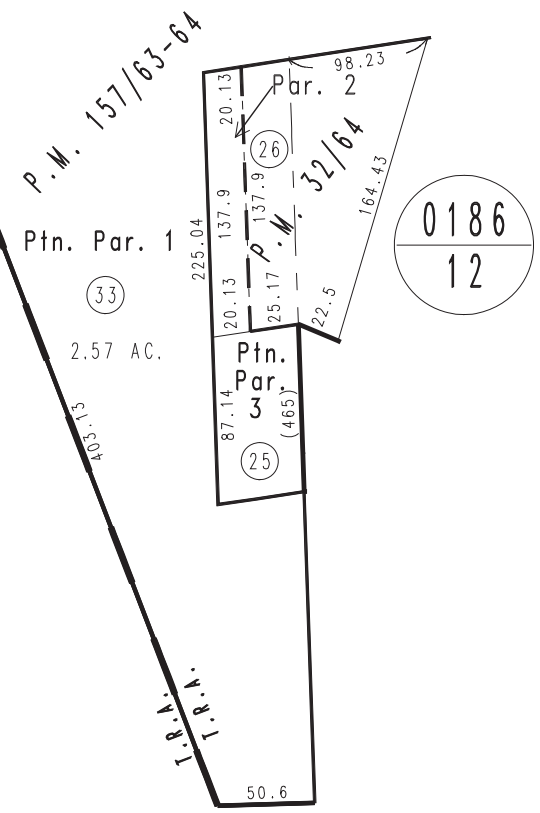
Ptn. S.E.1/4, S.E.1/4, Sec.30, T.9N.,R.23E., S.B.B.&M.

City of Needles
Tax Rate Area
3000,3006

0185 - 21



ASSESSED ON PAGE 19



30 | 29
---+---
31 | 32

May 2005

Ptn. Parcel Map No. 13813, P.M. 157/63-64
Parcel Map No. 8451, P.M. 87/1
Ptn. Parcel Map No. 3568, P.M. 32/64

Assessor's Map
Book 0185 Page 21
San Bernardino County

REVISED
10/20/22 KC
11/01/22 KC