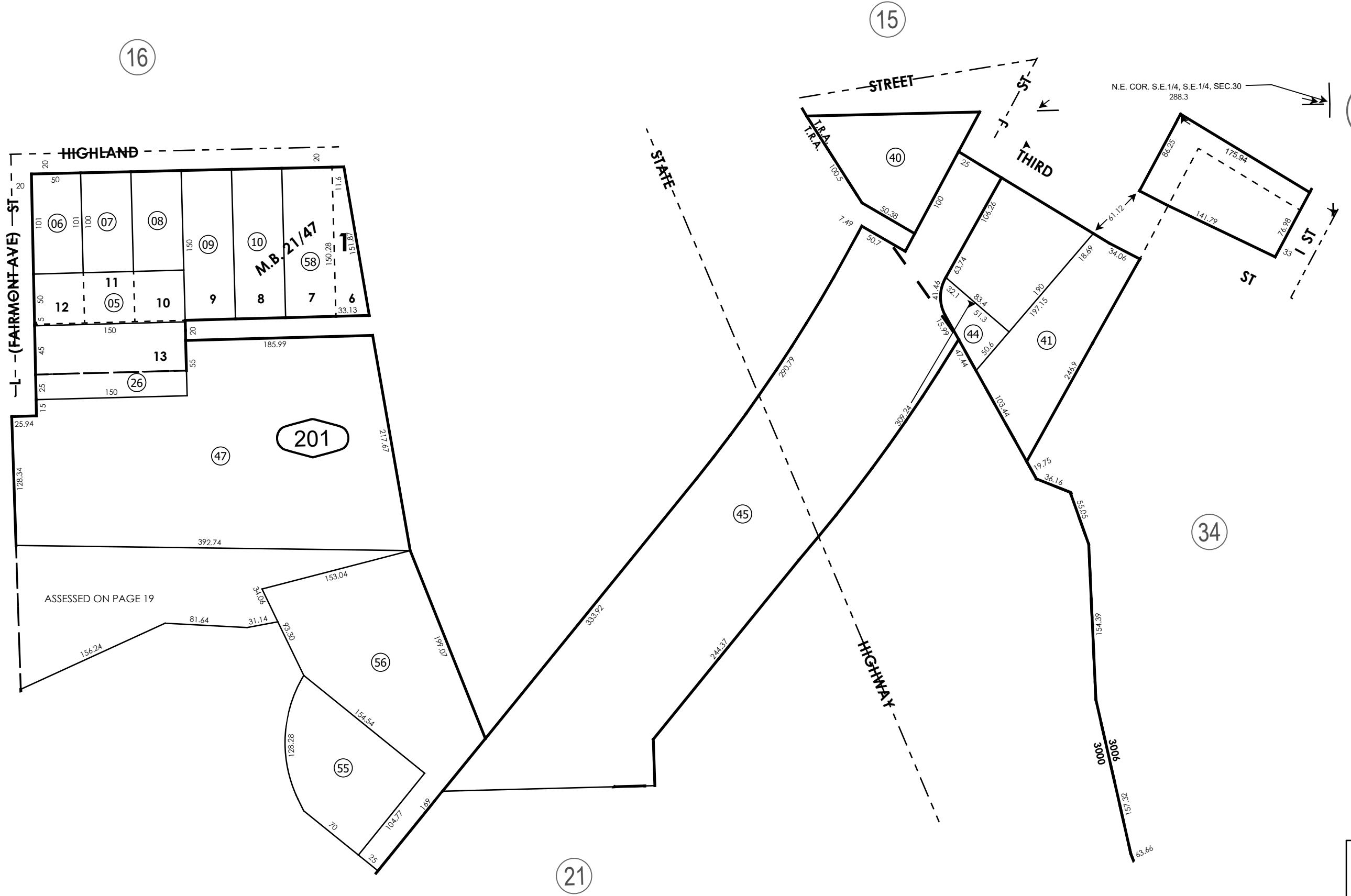


THIS MAP IS FOR THE PURPOSE OF AD VALOREM TAXATION ONLY.

Ptn. S.E.1/4, S.E.1/4, Sec.30, T.9N.,R.23E., S.B.B.&M.

City of Needles  
Tax Rate Area  
3000,3006

0185 - 20



0186  
09

18

19

21

May 2005

Parcel Map No. 6648, P.M. 63/78  
Ptn. Parcel Map No. 3569, P.M. 33/80  
Ptn. Killarney Heights Add., M.B. 21/47

Assessor's Map  
Book 0185 Page 20  
San Bernardino County

REVISED  
02/18/25 BS