

THIS MAP IS FOR THE PURPOSE OF AD VALOREM TAXATION ONLY.

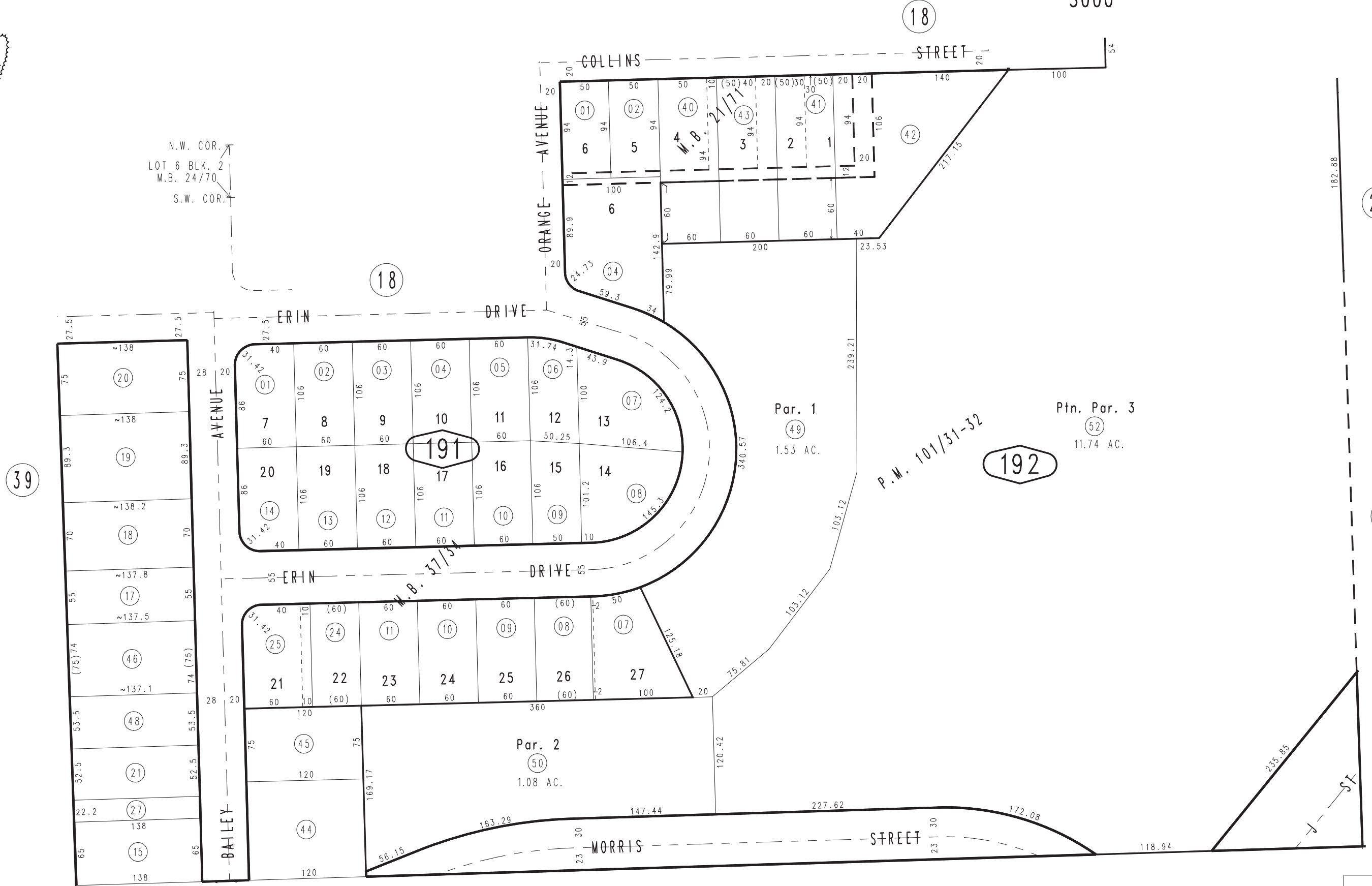
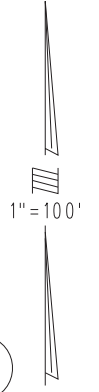
Ptn. S.E.1/4, Sec.30, T.9N.,R.23E., S.B.B.&M.

City of Needles
Tax Rate Area
3000

0185 - 19



N.W. COR.
LOT 6 BLK. 2
M.B. 24/70
S.W. COR.



39

18

18

20

21

22

S.1/4 COR. SEC.30
T.9N.,R.23E., S.B.M.

Ptn. Parcel Map No. 9098, P.M. 101/31-32
Ptn. Killarney Heights Add. No. 3, M.B. 21/71
Ptn. Tract No. 2629, M.B. 37/34

Assessor's Map
Book 0185 Page 19
San Bernardino County

REVISED
11/01/22 KC