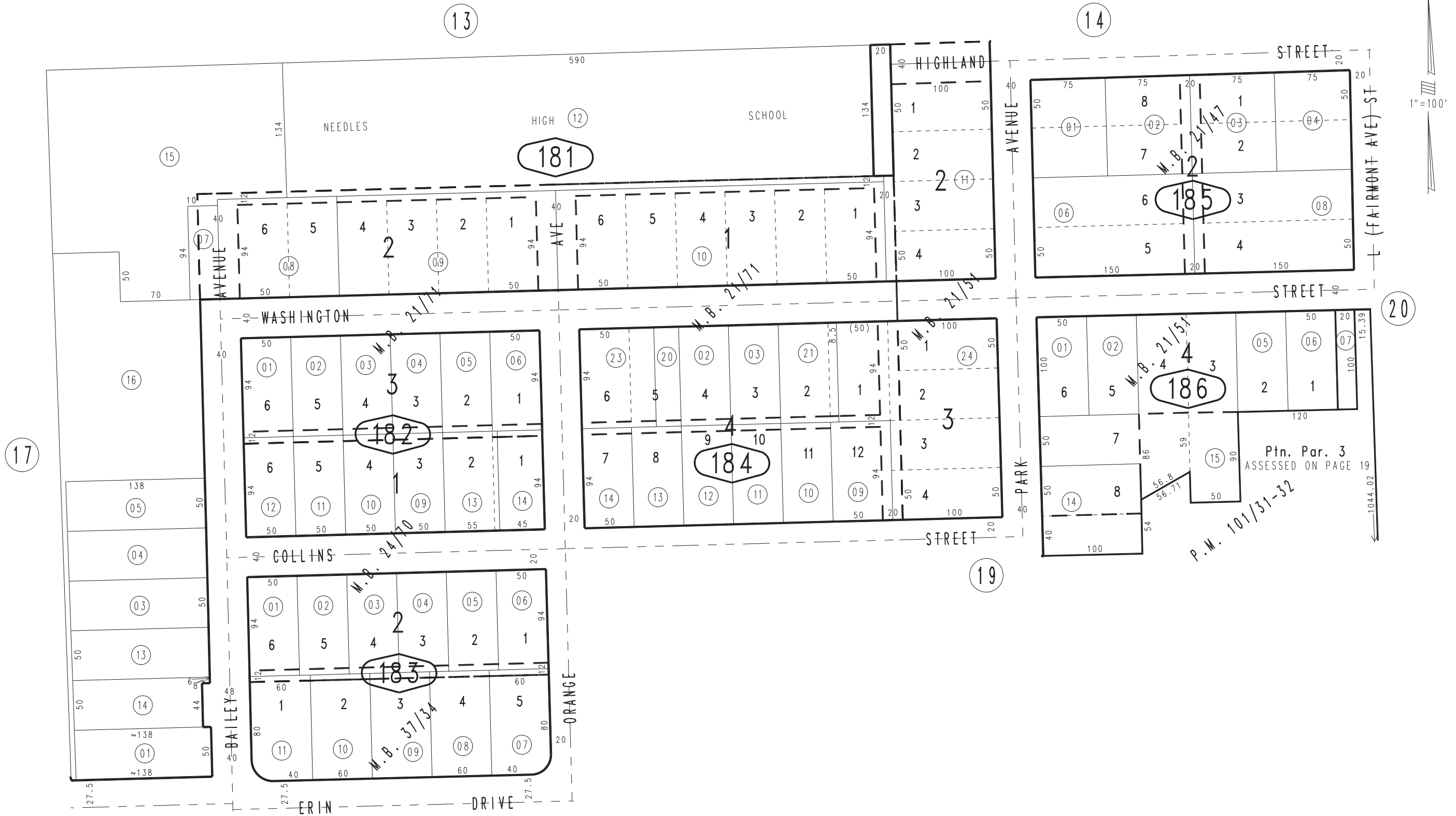


THIS MAP IS FOR THE PURPOSE OF AD VALOREM TAXATION ONLY.

Ptn. S.E.1/4, Sec.30, T.9N.,R.23E., S.B.B.&M.

City of Needles Tax Rate Area 3000

0185 - 18



Ptn. killarney Heights Add, M.B. 21/47  
Ptn. killarney Heights Add. No. 2, M.B. 21/51  
Ptn. killarney Heights Add. No. 3, M.B. 21/71  
killarney Heights Add. No. 4, M.B. 24/70  
Ptn. Tract No. 2629, M.B. 37/34

Ptn. Parcel Map No. 9098, P.M. 101/31-32

Assessor's Map  
Book 0185 Page 18  
San Bernardino County

REVISED  
11/18/16 KC  
11/14/17 KC