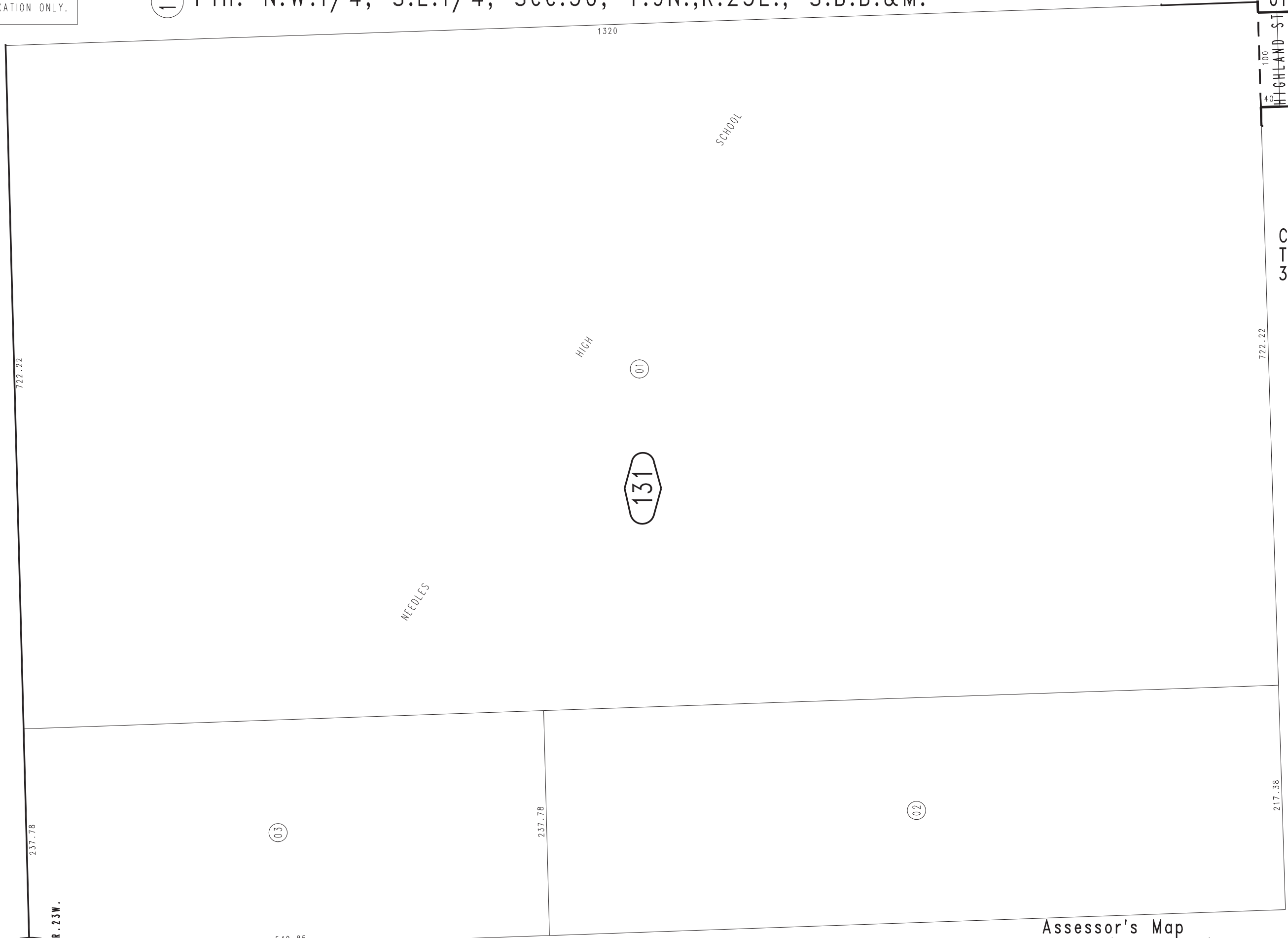


THIS MAP IS FOR THE PURPOSE
OF AD VALOREM TAXATION ONLY.

14 Ptn. N.W.1/4, S.E.1/4, Sec.30, T.9N.,R.23E., S.B.B.&M.



0185 - 13



City of Needles
Tax Rate Area
3000

May 2005

SEC.
30
T.9N., R.23E.

Assessor's Map
Book 0185 Page 13
San Bernardino County

REVISED
11/06/14 GW