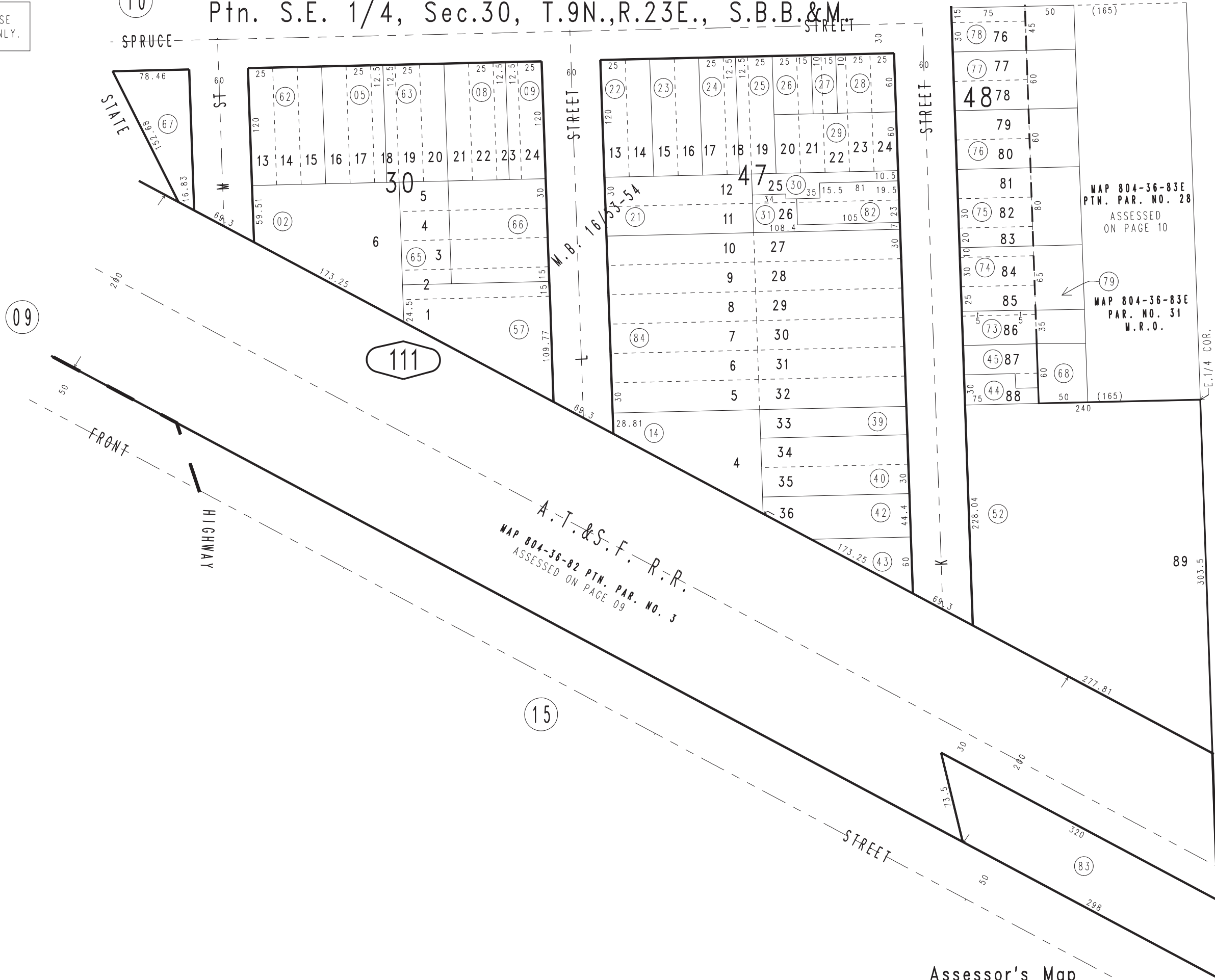


THIS MAP IS FOR THE PURPOSE OF AD VALOREM TAXATION ONLY.



10 Ptn. S.E. 1/4, Sec.30, T.9N.,R.23E., S.B.B.&M.

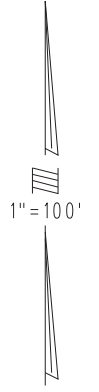
0185 - 11



MAP 804-36-83E
PTN. PAR. NO. 28
ASSESSED
ON PAGE 10

MAP 804-36-83E
PAR. NO. 31
M.R.O.

A.T.&S.F. R.R.
MAP 804-36-82 PTN. PAR. NO. 3
ASSESSED ON PAGE 09



0186
02

City of Needles
Tax Rate Area
3006

0186
03

Assessor's Map
Book 0185 Page 11
San Bernardino County

REVISED
07/28/16 KC