

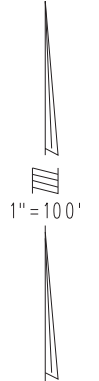
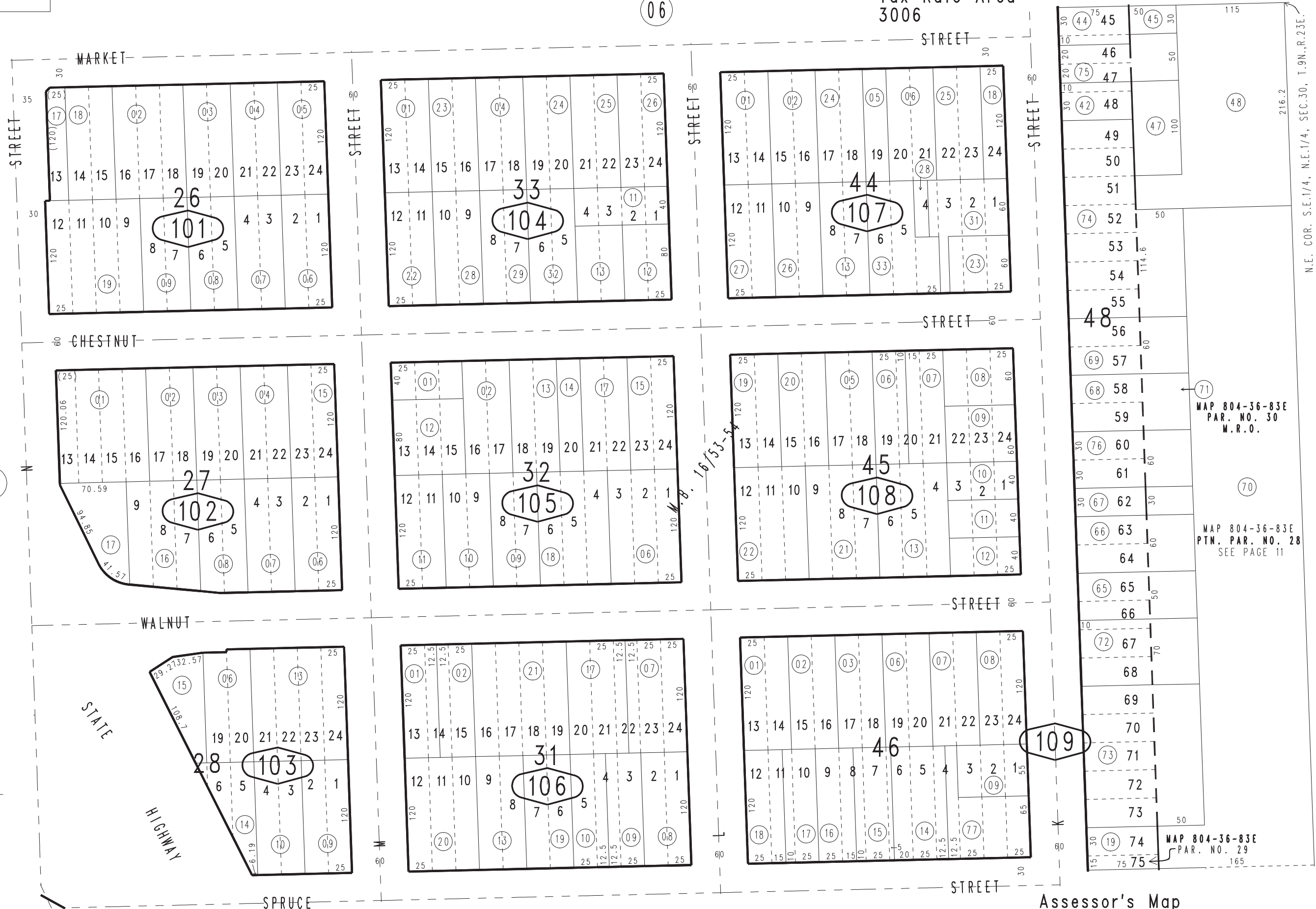
THIS MAP IS FOR THE PURPOSE OF AD VALOREM TAXATION ONLY.

Ptn. Sec.30, T.9N.,R.23E., S.B.B.&M.

City of Needles Tax Rate Area 3006

0185 - 10

06



08

0186  
02

11

REVISED 06/14/23 KA

May 2005

Ptn. Denair's Sub. No. 2, M.B. 16/53-54

Assessor's Map Book 0185 Page 10 San Bernardino County