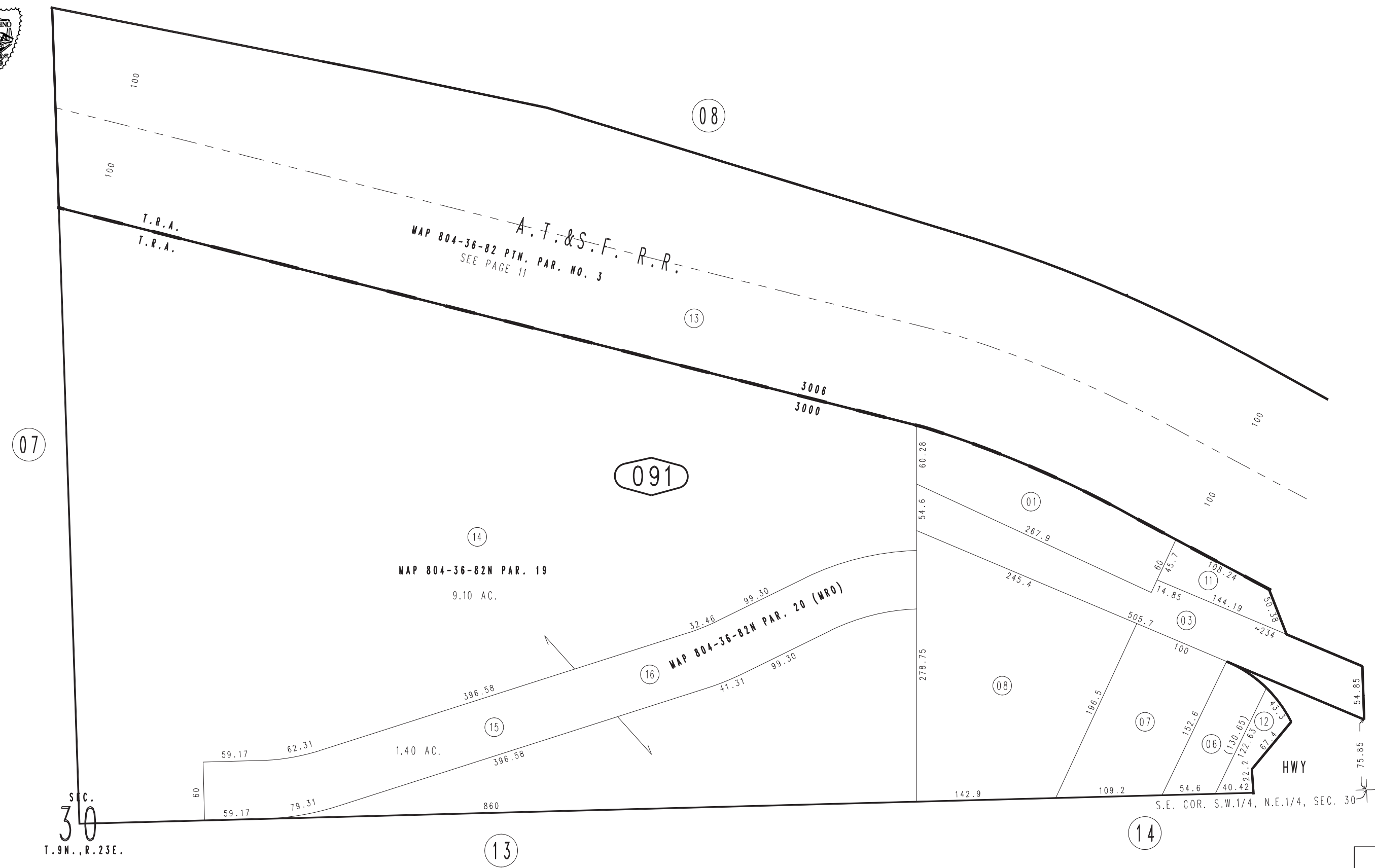


THIS MAP IS FOR THE PURPOSE  
OF AD VALOREM TAXATION ONLY.

Ptn. S.W.1/4, N.E.1/4, Sec.30, T.9N.,R.23E., S.B.B.&M.

City of Needles  
Tax Rate Area  
3000,3006

0185 - 09



SEC.  
30  
T.9N., R.23E.

May 2005

Assessor's Map  
Book 0185 Page 09  
San Bernardino County

REVISED  
12/14/09 KC  
05/17/10 LH