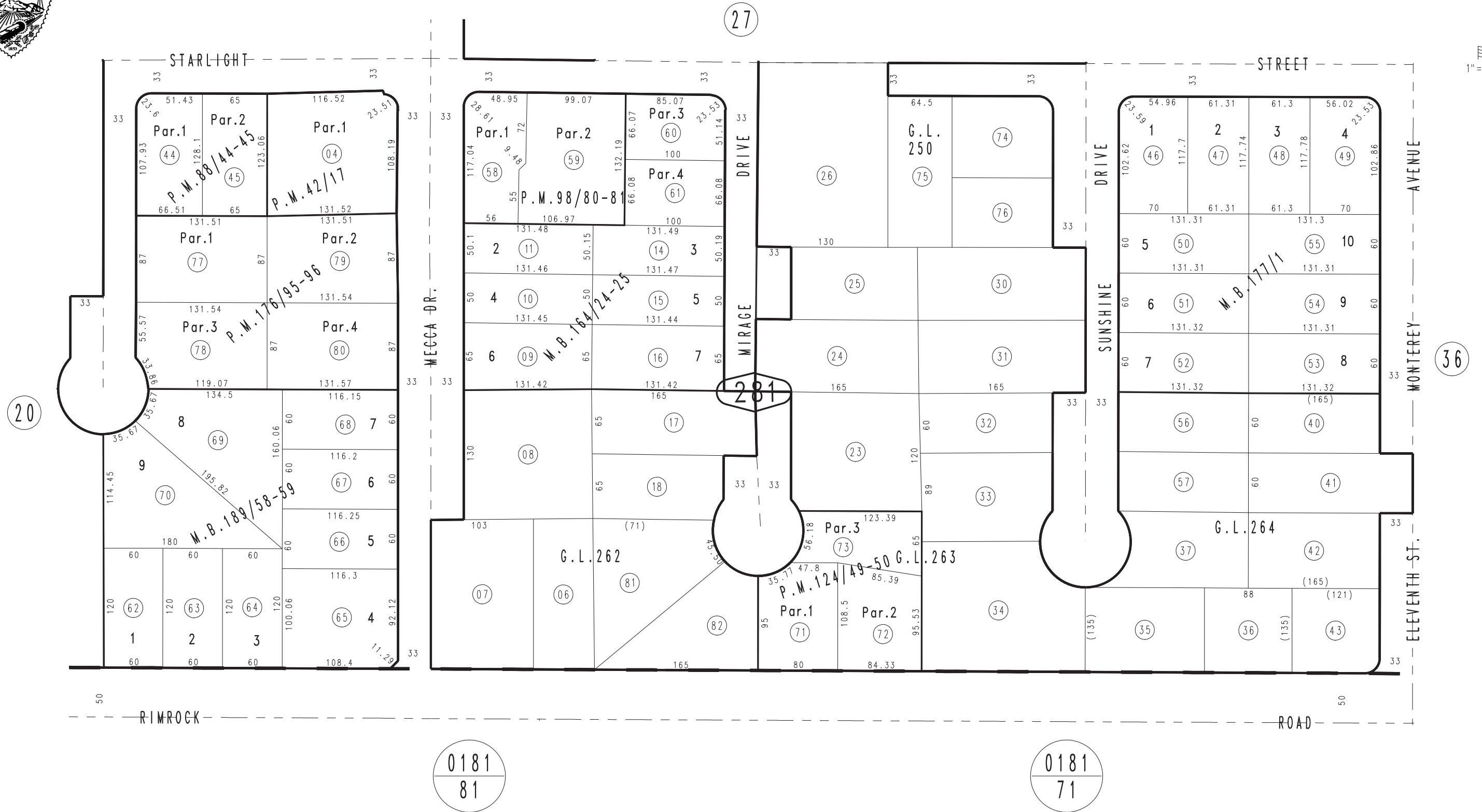


THIS MAP IS FOR THE PURPOSE OF AD VALOREM TAXATION ONLY.

S.1/2, S.E.1/4, S.E.1/4, Fractional Sec.7, T.9N.,R.1W., S.B.B.&M.

City of Barstow
Tax Rate Area
9014

0183 - 28



Parcel Map No.9044, P.M.98/80-81
 Tract No.12729, M.B.177/1
 Parcel Map No.8434, P.M.88/44-45
 Ptn. Tract No.10712, M.B.164/24-25
 Ptn. Parcel Map No.4601, P.M.42/17

Parcel Map No.14715, P.M.176/95-96
 Parcel Map No.10570, P.M.124/49-50
 Tract No.12394, M.B.189/58-59

Assessor's Map
 Book 0183 Page 28
 San Bernardino County