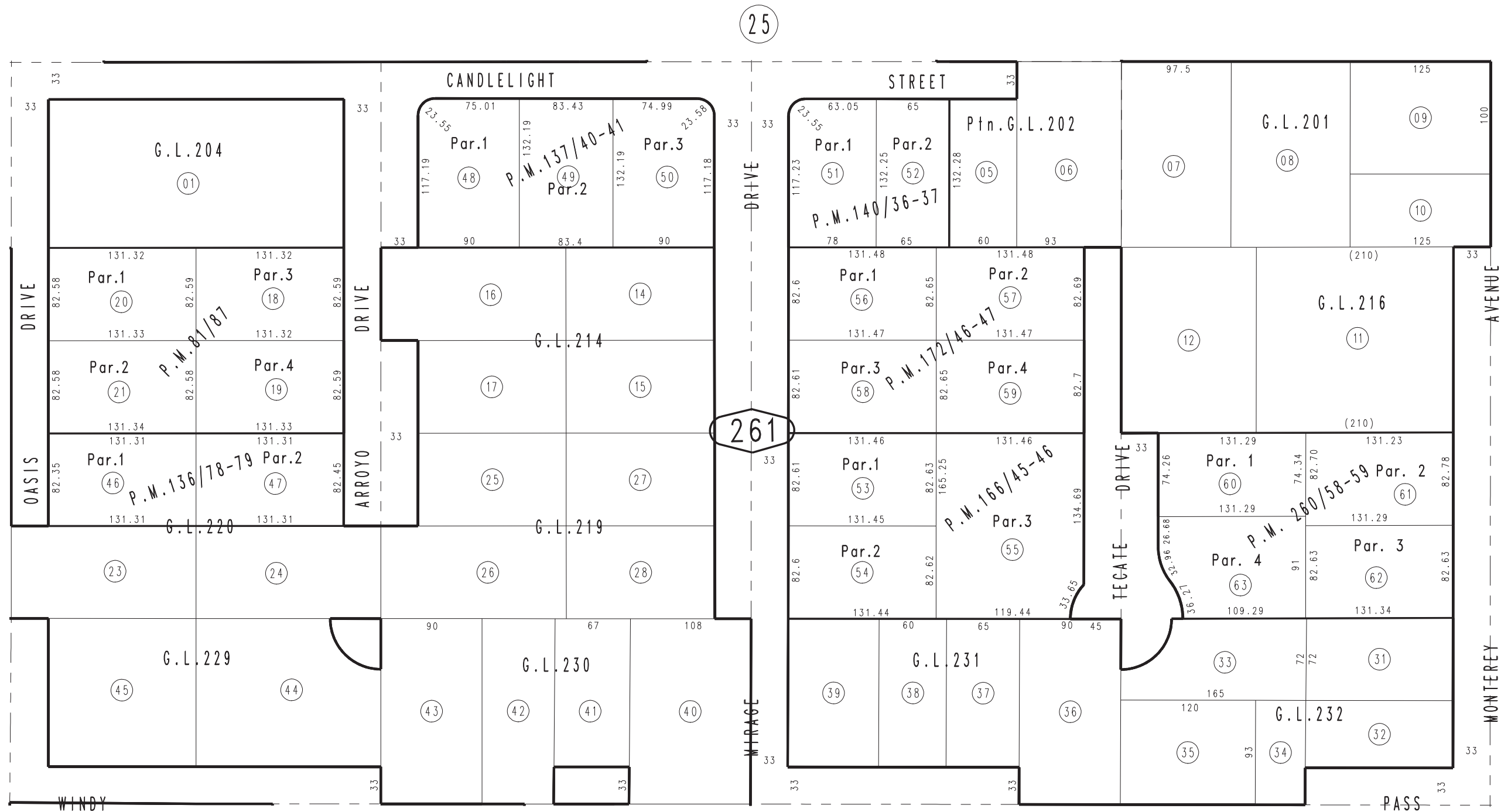


THIS MAP IS FOR THE PURPOSE OF AD VALOREM TAXATION ONLY.

S.1/2, N.E.1/4, S.E.1/4, Fractional Sec.7, T.9N.,R.1W., S.B.B.&M.

City of Barstow
Tax Rate Area
9014

0183 - 26



Parcel Map No.20519, P.M.260/58-59
 Parcel Map No.14445, P.M.172/46-47
 Parcel Map No.13728, P.M.166/45-46
 Parcel Map No.7925, P.M.140/36-37
 Parcel Map No.12110, P.M.137/40-41

Parcel Map No.11752, P.M.136/78-79
 Parcel Map No.7950, P.M.81/87

Assessor's Map
 Book 0183 Page 26
 San Bernardino County

REVISED
 03/09/15 GW-MC
 03/29/23 RU