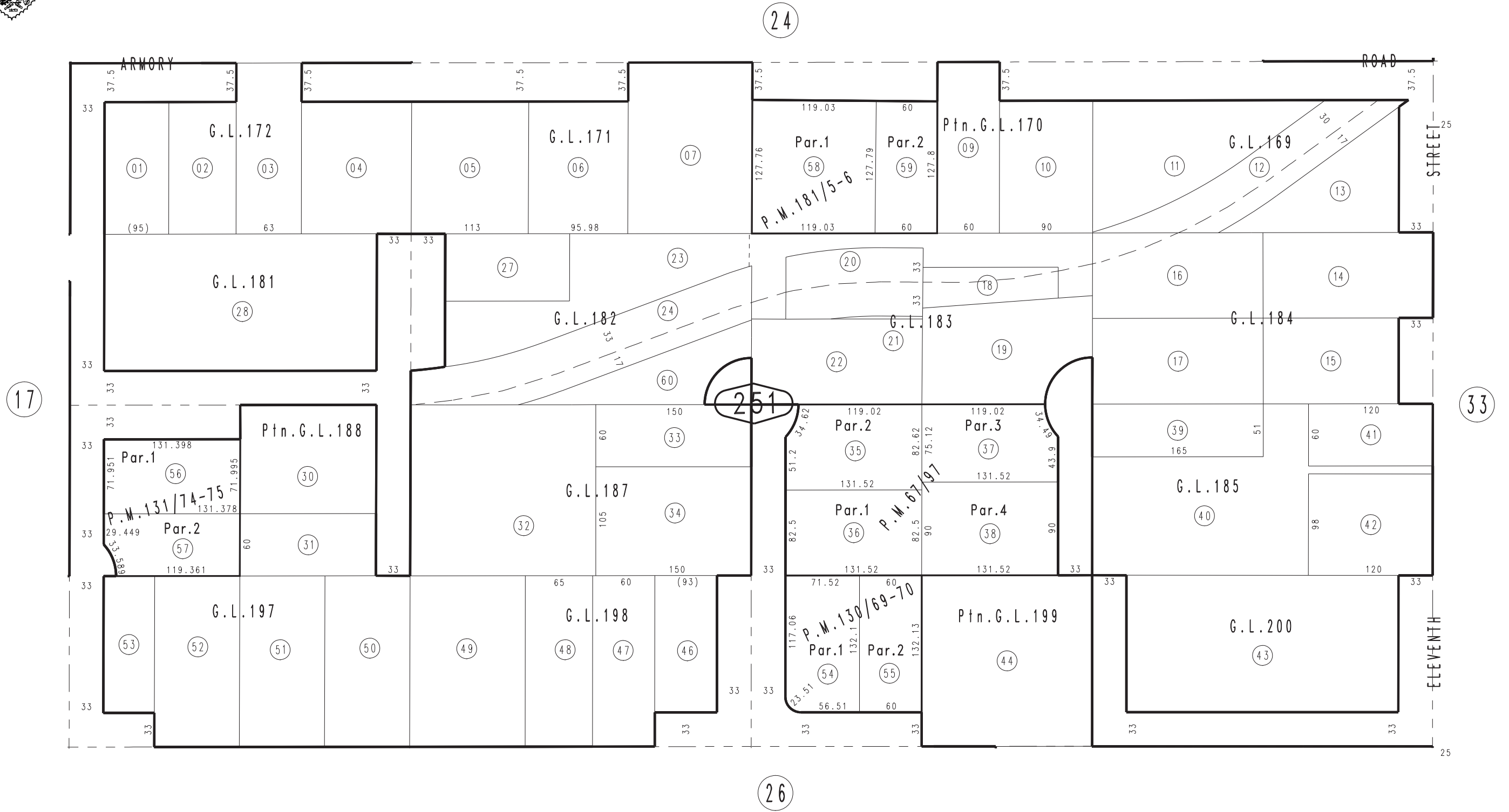


THIS MAP IS FOR THE PURPOSE
OF AD VALOREM TAXATION ONLY.

N.1/2, N.E.1/4, S.E.1/4, Fractional Sec.7, T.9N.,R.1W., S.B.B.&M.

City of Barstow
Tax Rate Area
9014

0183 - 25



November 2003

Parcel Map No.14909, P.M.181/5-6
Parcel Map No.11527, P.M.131/74-75
Parcel Map No.11707, P.M.130/69-70
Parcel Map No.6987, P.M.67/97

Assessor's Map
Book 0183 Page 25
San Bernardino County

REVISED
01/04/10 LH
03/01/12 RU-MC