

THIS MAP IS FOR THE PURPOSE OF AD VALOREM TAXATION ONLY.

S.1/2, S.E.1/4, N.E.1/4, Fractional Sec.7, T.9N.,R.1W., S.B.B.&M.

City of Barstow  
Tax Rate Area  
9014

0183 - 24



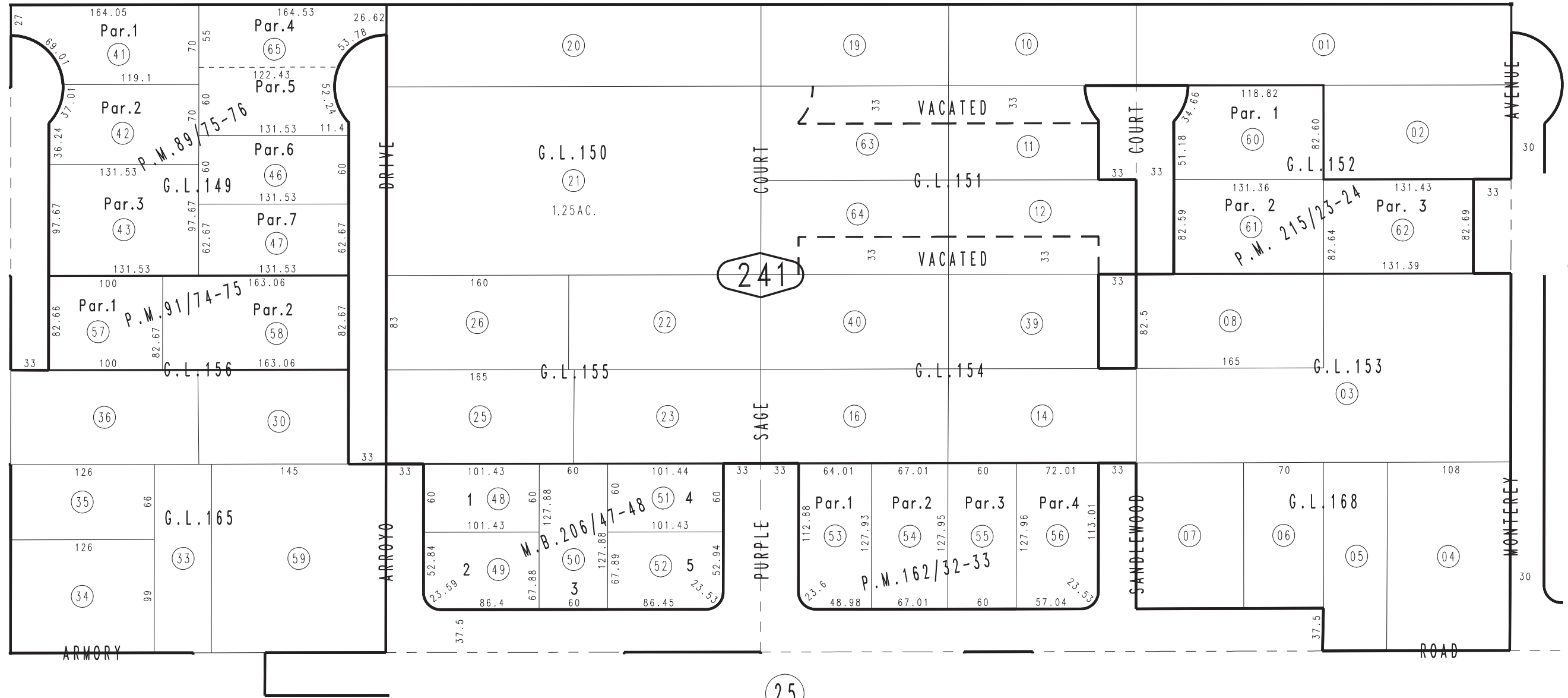
STATE

HIGHWAY

15

23

1"=100'



Parcel Map No. 17577, P.M. 215/23-24  
Parcel Map No. 12271, P.M. 162/32-33  
Parcel Map No. 8537, P.M. 91/74-75  
Parcel Map No. 7949, P.M. 89/75-76

Tract No. 13534, M.B. 206/47-48

Assessor's Map  
Book 0183 Page 24  
San Bernardino County

REVISED  
01/04/10 LH  
09/28/11 GW  
03/01/12 RU-MC

November 2003