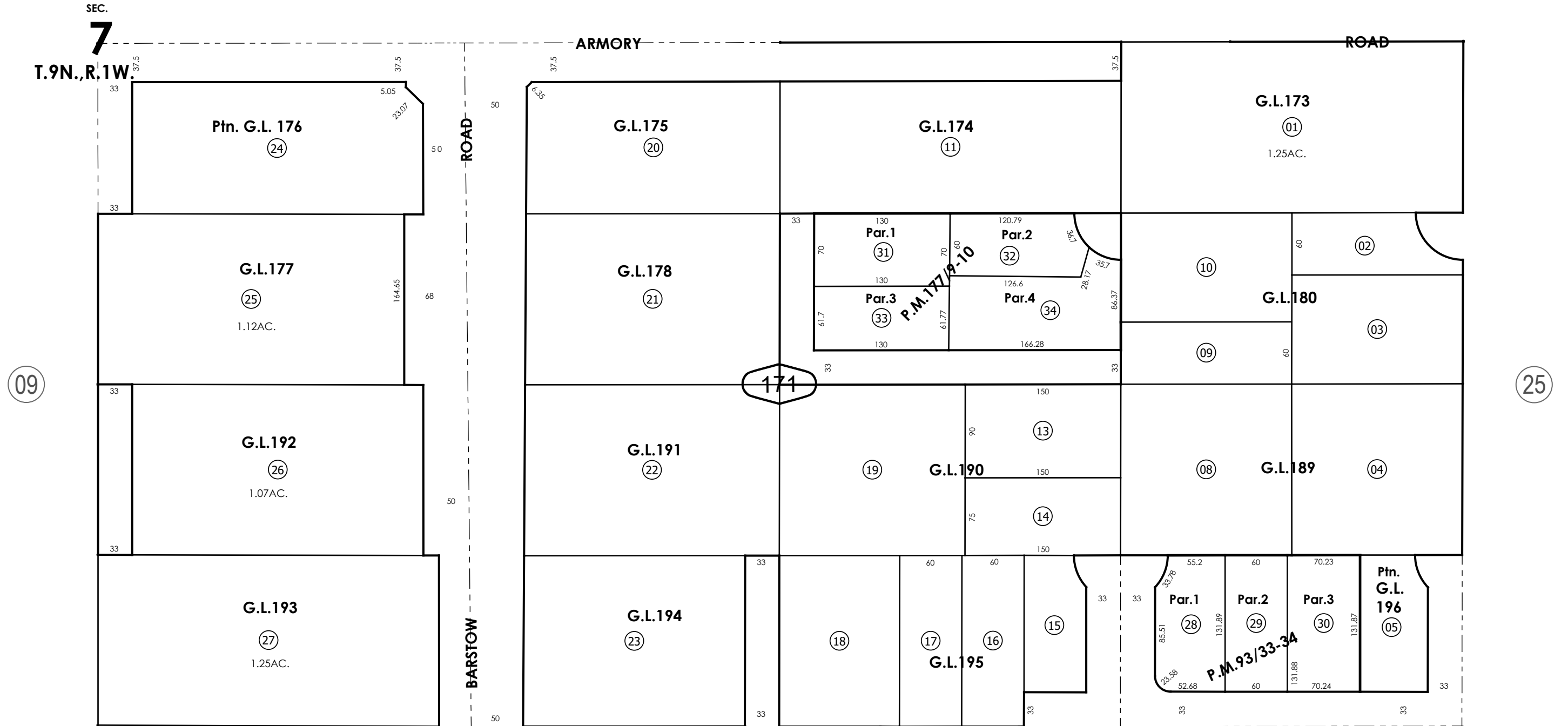


THIS MAP IS FOR THE PURPOSE OF AD VALOREM TAXATION ONLY.

N.1/2, N.W.1/4, S.E.1/4, Fractional Sec.7, T.9N.,R.1W., S.B.B.&M.

City of Barstow  
Tax Rate Area  
9014

0183 - 17



Assessor's Map  
Book 0183 Page 17  
San Bernardino County

REVISED  
01/04/10 LH  
06/26/25 BS