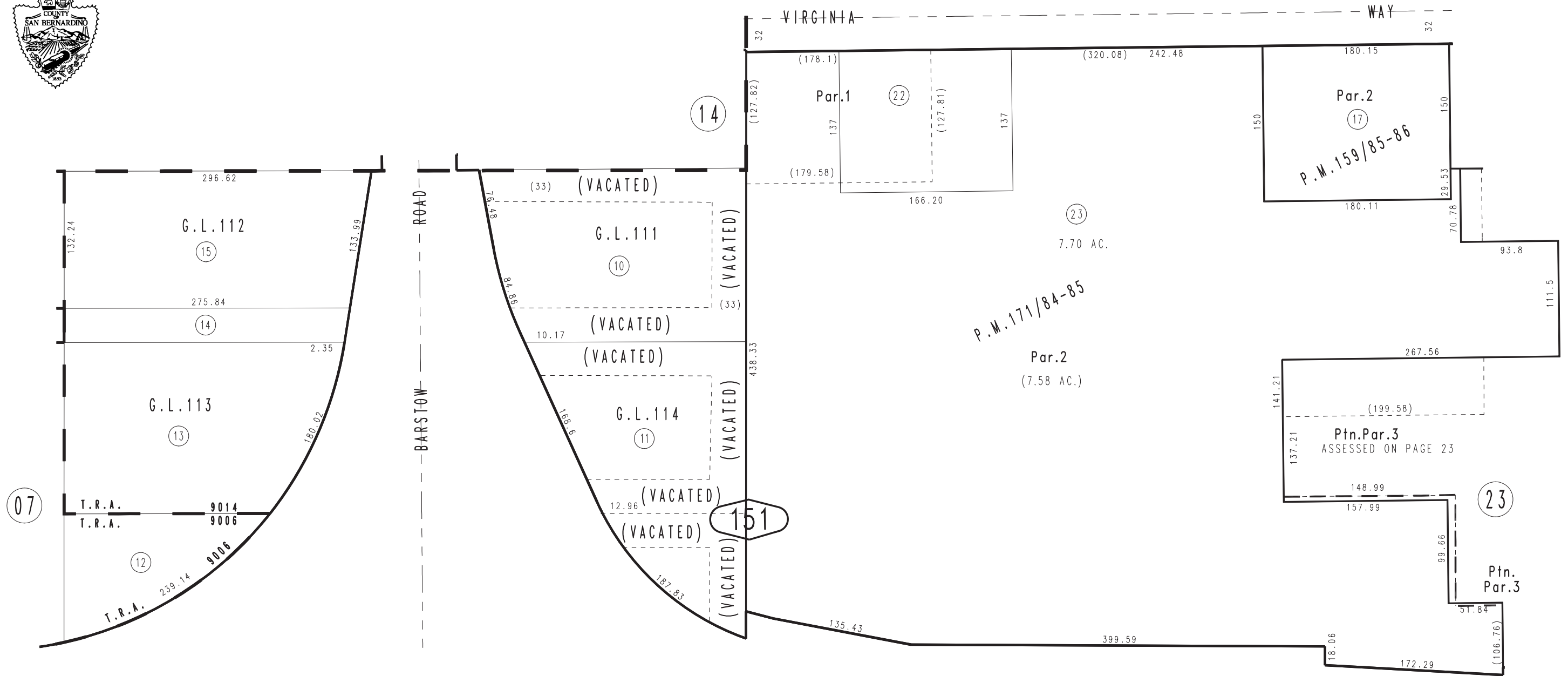


THIS MAP IS FOR THE PURPOSE OF AD VALOREM TAXATION ONLY.

N.1/2, S.W.1/4, N.E.1/4, Fractional Sec.7, T.9N.,R.1W., S.B.B.&M.

City of Barstow
Tax Rate Area
9006,9014

0183 - 15



STATE

HIGHWAY

15

16

November 2003

Parcel Map No.14288, P.M.171/84-85
Ptn. Parcel Map No.13644, P.M.159/85-86

Assessor's Map
Book 0183 Page 15
San Bernardino County

REVISED
01/04/10 LH
08/16/10 RU
02/28/12 RU