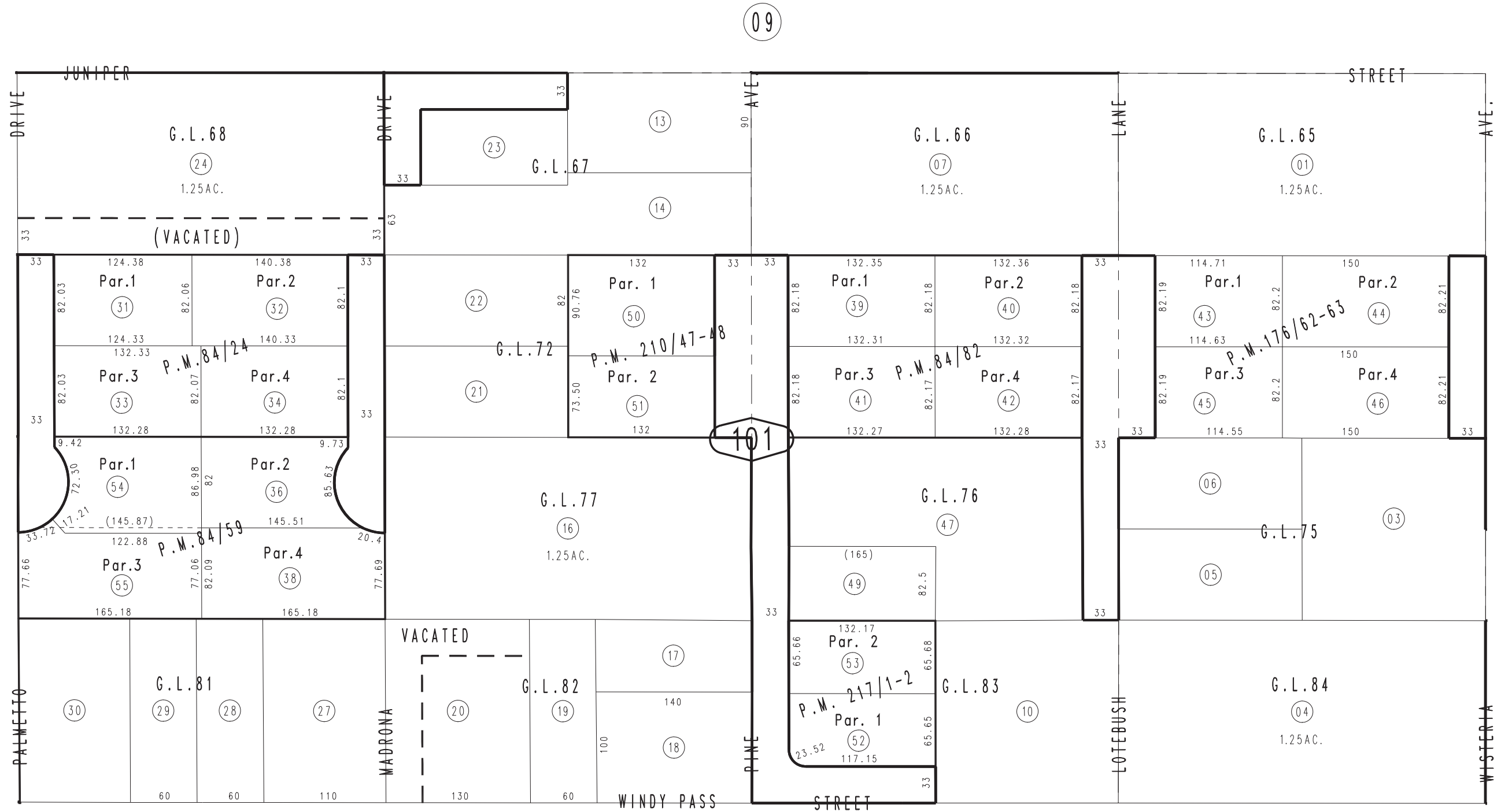


THIS MAP IS FOR THE PURPOSE OF AD VALOREM TAXATION ONLY.

Ptn. N.1/2, S.W.1/4, Fractional Sec.7, T.9N.,R.1W., S.B.B.&M.

City of Barstow  
Tax Rate Area  
9014

0183 - 10



Parcel Map No. 18141, P.M. 217/1-2  
 Parcel Map No. 17108, P.M. 210/47-48  
 Parcel Map No. 14686, P.M. 176/62-63  
 Parcel Map No. 5184, P.M. 84/82  
 Parcel Map No. 7795, P.M. 84/59  
 Parcel Map No. 7796, P.M. 84/24

November 2003

Assessor's Map  
 Book 0183 Page 10  
 San Bernardino County

REVISED  
 08/11/08 LH  
 07/29/09 RU  
 05/19/10 RU