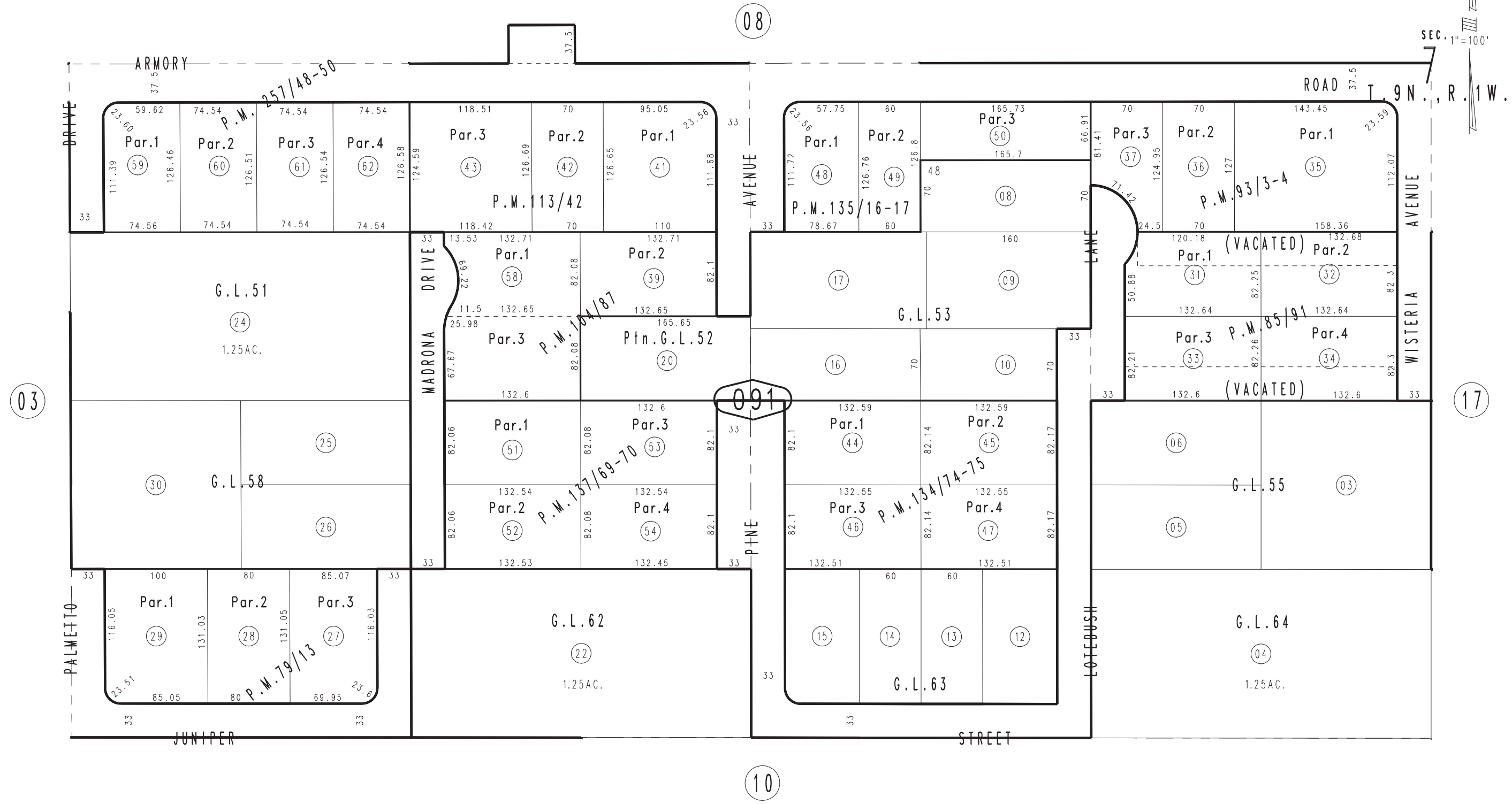


THIS MAP IS FOR THE PURPOSE OF AD VALOREM TAXATION ONLY.

Ptn. N.1/2, S.W.1/4, Fractional Sec.7, T.9N.,R.1W., S.B.B.&M.

City of Barstow  
Tax Rate Area  
9014

0183 - 09



SEC. 1" = 100'

Parcel Map No.20166, P.M.257/48-50  
 Parcel Map No.11922, P.M.137/69-70  
 Parcel Map No.11183, P.M.135/16-17  
 Parcel Map No.11115, P.M.134/74-75  
 Parcel Map No.10279, P.M.113/42

Parcel Map No.9820, P.M.104/87  
 Parcel Map No.8709, P.M.93/3-4  
 Parcel Map No.8308, P.M.85/91  
 Parcel Map No.6864, P.M.79/13

Assessor's Map  
 Book 0183 Page 09  
 San Bernardino County

REVISED  
 11/05/21 RU