

THIS MAP IS FOR THE PURPOSE OF AD VALOREM TAXATION ONLY.

Ptn. S.1/2, N.W.1/4, Fractional Sec.7, T.9N.,R.1W., S.B.B.&M.

City of Barstow
Tax Rate Area
9014

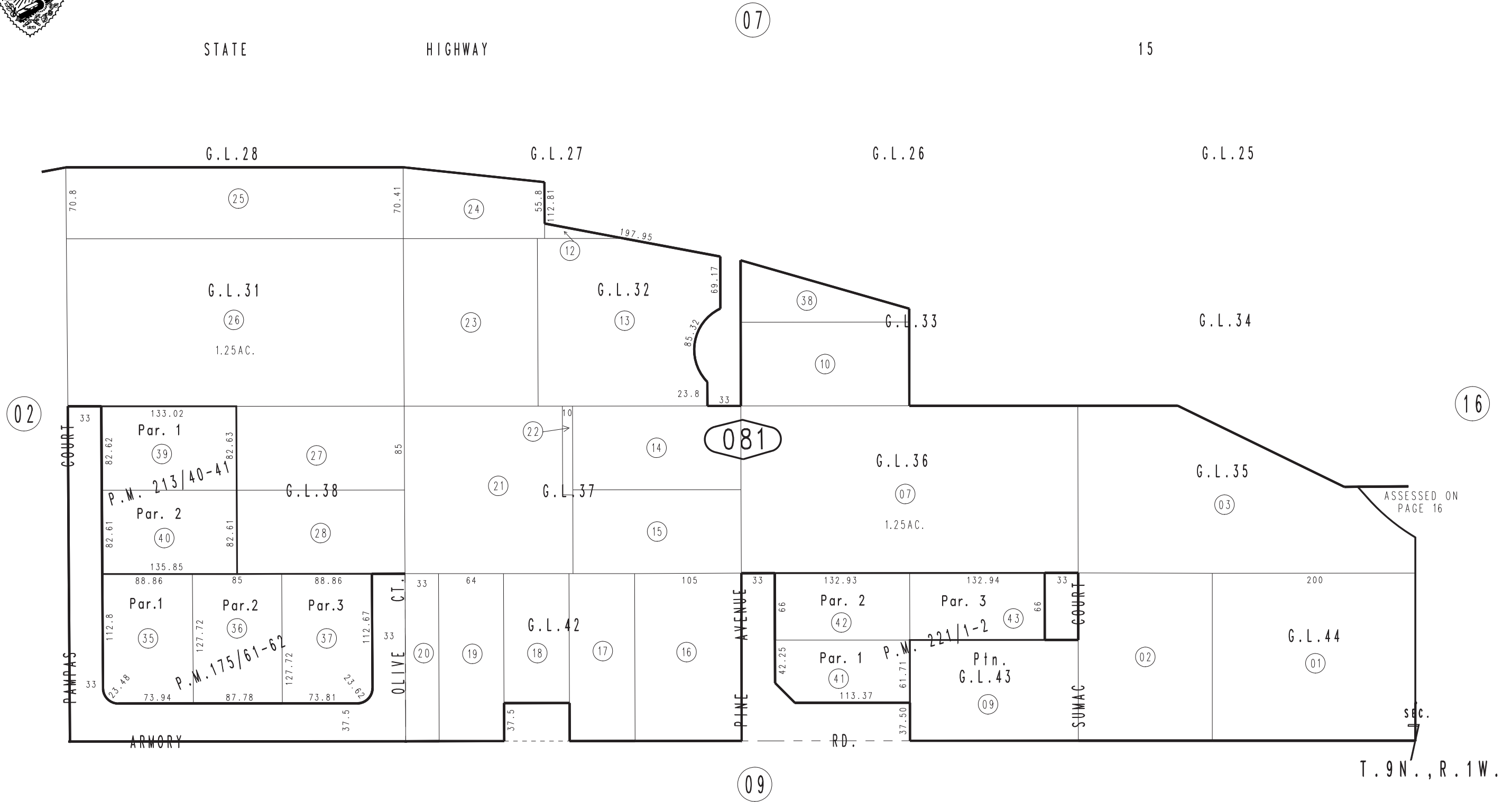
0183 - 08



STATE

HIGHWAY

15



November 2003

Parcel Map No. 17666, P.M. 221/1-2
Parcel Map No. 17418, P.M. 213/40-41
Parcel Map No. 14510, P.M. 175/61-62

Assessor's Map
Book 0183 Page 08
San Bernardino County

REVISED
01/04/10 LH