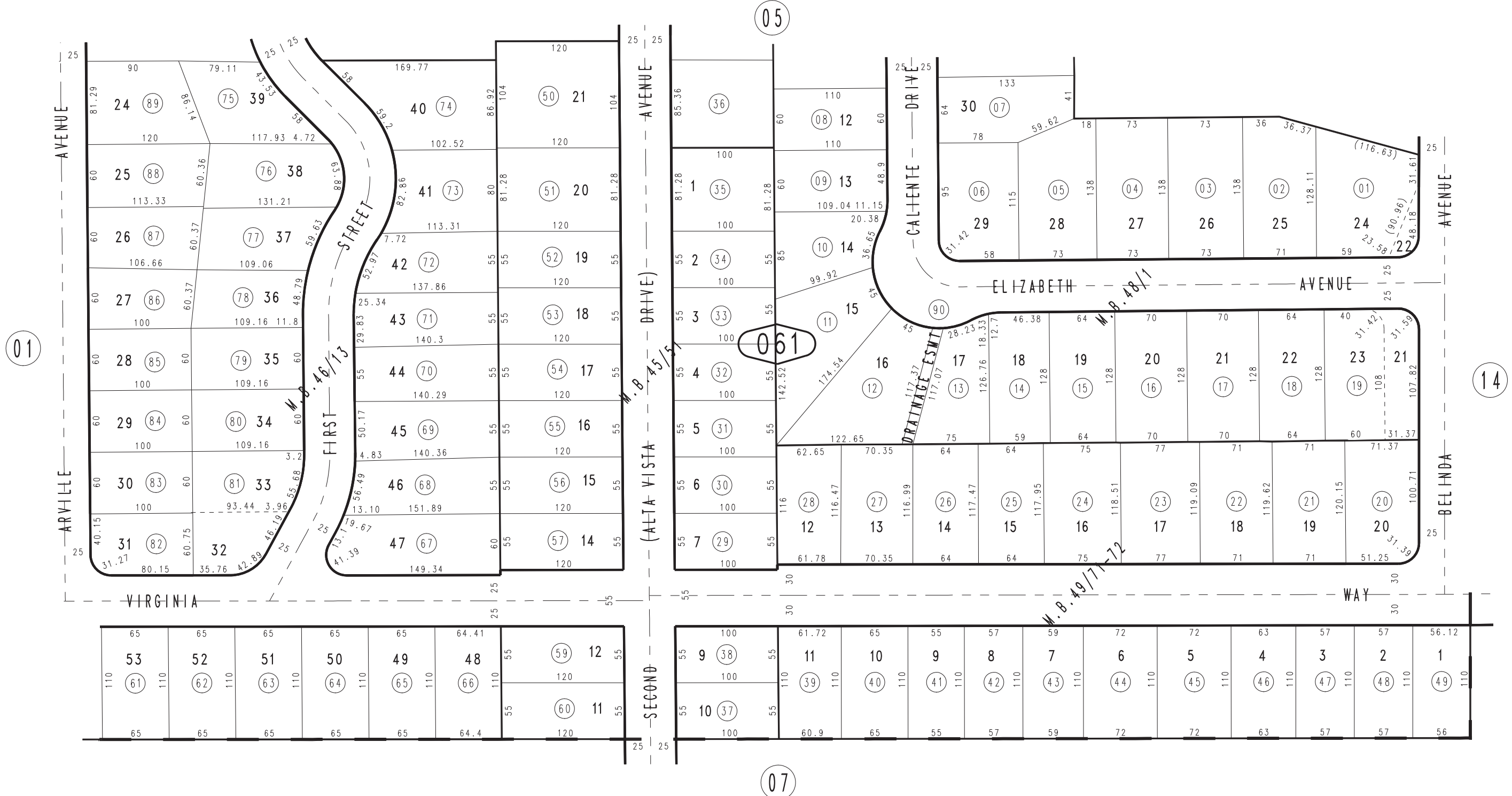


THIS MAP IS FOR THE PURPOSE OF AD VALOREM TAXATION ONLY.

Ptn. N.1/2, N.W.1/4, Fractional Sec.7, T.9N.,R.1W., S.B.B.&M.

City of Barstow  
Tax Rate Area  
9002

0183 - 06



Tract No.3733, M.B.49/71-72  
Ptn. Tract No.3646, M.B.48/1  
Ptn. Tract No.3480, M.B.46/13  
Eichier Sub. Tract No.3461, M.B.45/51

November 2003

Assessor's Map  
Book 0183 Page 06  
San Bernardino County

REVISED  
01/23/14 BK-MC