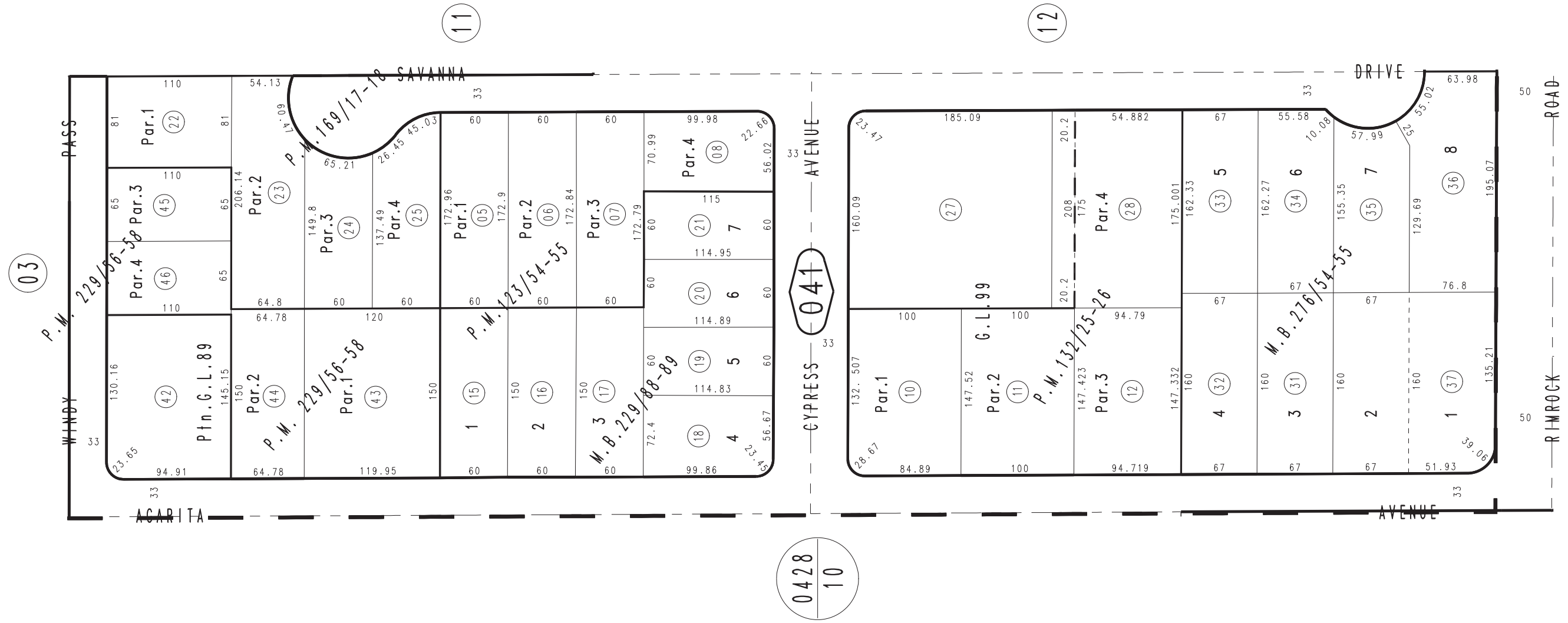


THIS MAP IS FOR THE PURPOSE OF AD VALOREM TAXATION ONLY.

Ptn. S.1/2, S.W.1/4, Fractional Sec.7, T.9N.,R.1W., S.B.B.&M.

City of Barstow  
Tax Rate Area  
9014

0183 - 04



Parcel Map No. 18297, P.M. 226/76-77, Amending Map P.M. 229/56-58  
Tract No. 15945, M.B. 276/54-55  
Parcel Map No. 14359, P.M. 169/17-18  
Tract No. 14549, M.B. 229/88-89  
Parcel Map No. 11525, P.M. 132/25-26  
Parcel Map No. 11150, P.M. 123/54-55

November 2003

Assessor's Map  
Book 0183 Page 04  
San Bernardino County

REVISED  
03/11/08 RU  
08/19/08 RU  
01/04/10 LH