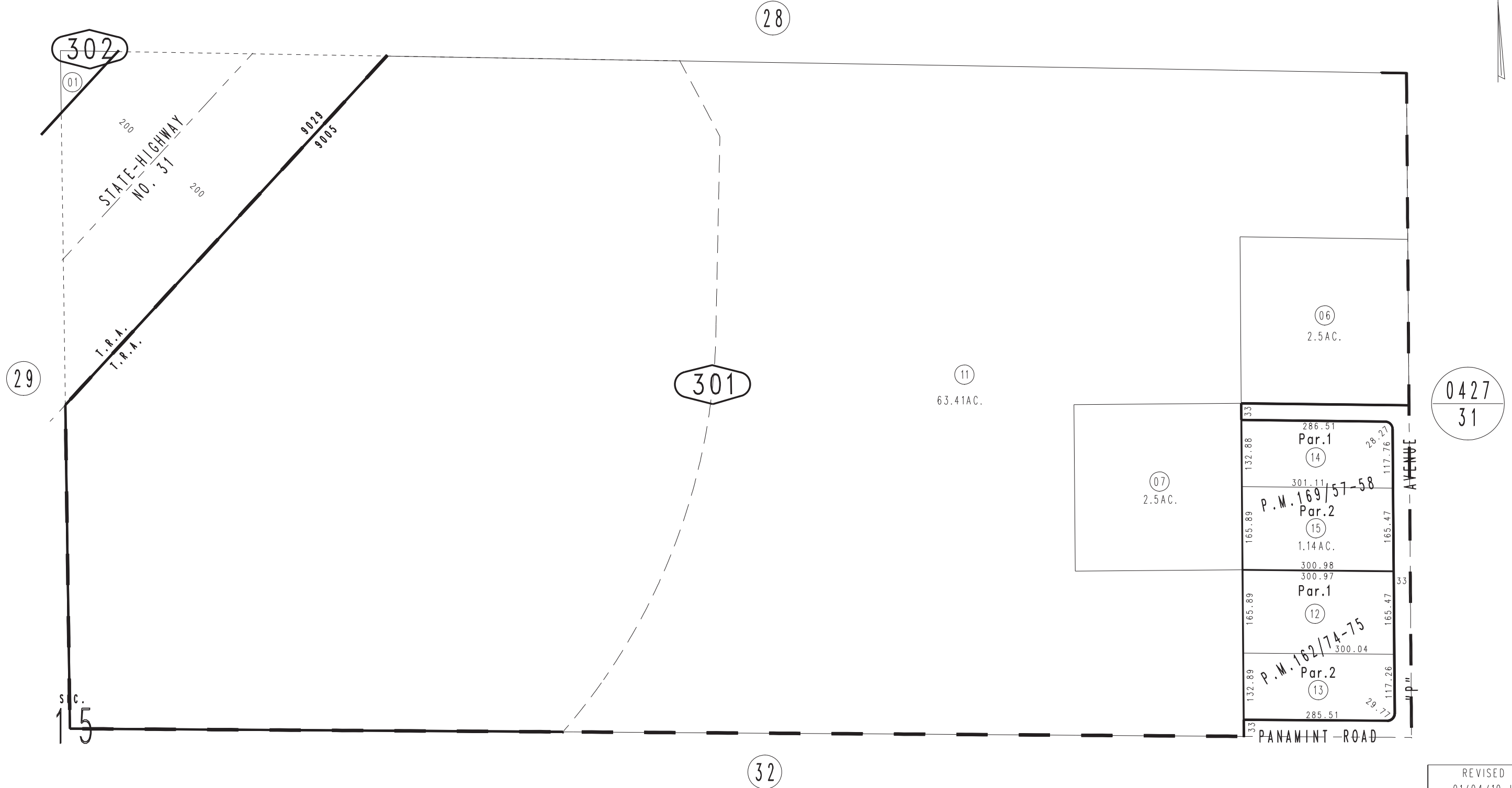


THIS MAP IS FOR THE PURPOSE  
OF AD VALOREM TAXATION ONLY.

S.1/2 N.E.1/4 Sec.15 T.9N., R.2W., S.B.B.&M.

City Of Barstow  
Tax Rate Area  
9005 9029

0182 - 30



October 2003

Parcel Map No.14315, P.M.169/57-58  
Parcel Map No.13989, P.M.162/74-75

Assessor's Map  
Book 0182 Page 30  
San Bernardino County

REVISED  
01/04/10 LH  
04/27/10 RM