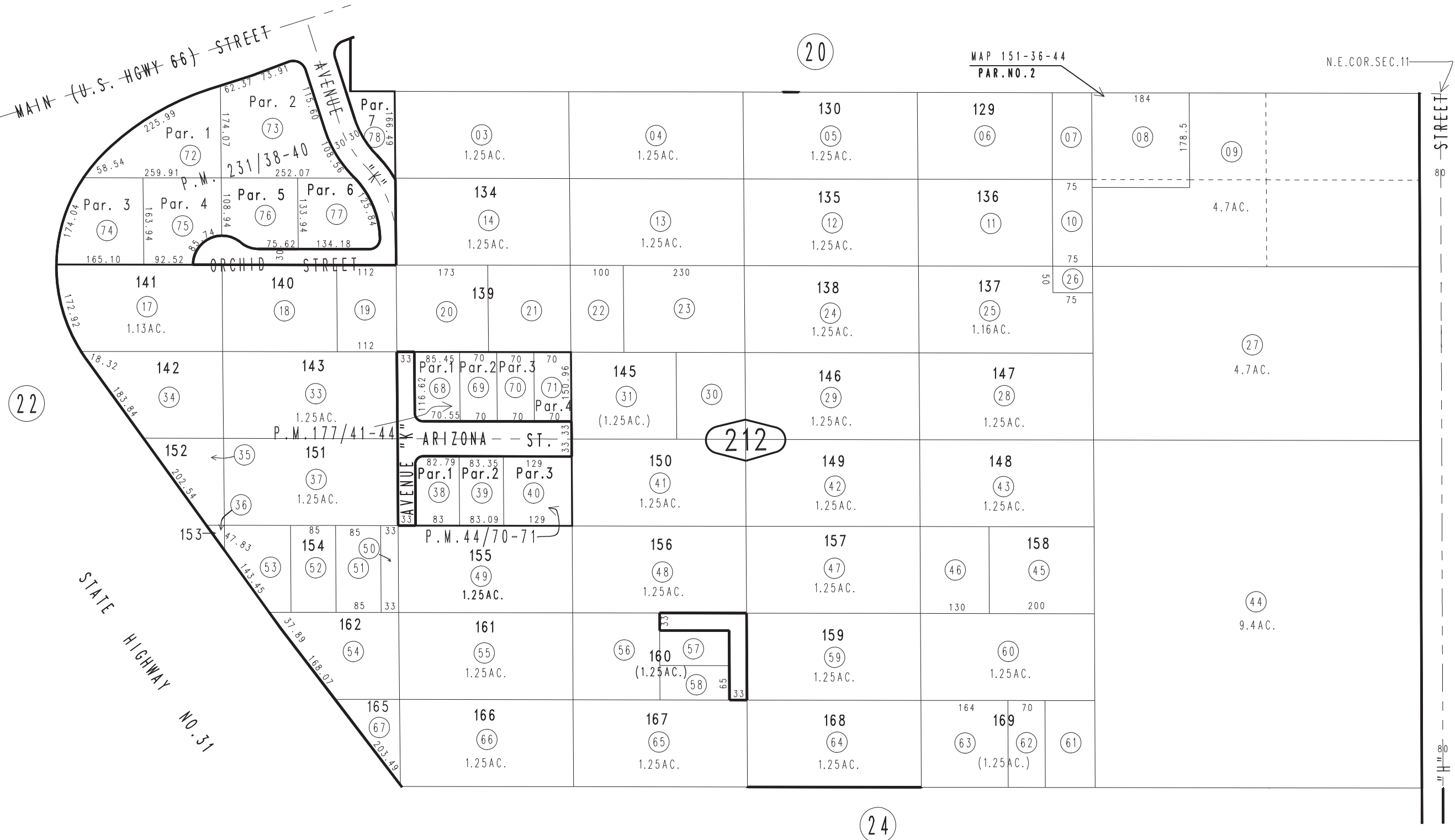


THIS MAP IS FOR THE PURPOSE OF AD VALOREM TAXATION ONLY.

N.1/2 N.E.1/4 Sec.11, T.9N.,R.2W., S.B.B.&M.

City Of Barstow
Tax Rate Area
9006

0182 - 21



Parcel Map No. 18128, P.M. 231/38-40
Parcel Map No. 14654, P.M.177/41-44
Parcel Map No. 3969, P.M.44/70-71

October 2003

Assessor's Map
Book 0182 Page 21
San Bernardino County

REVISED
01/05/09 RU
01/04/10 LH