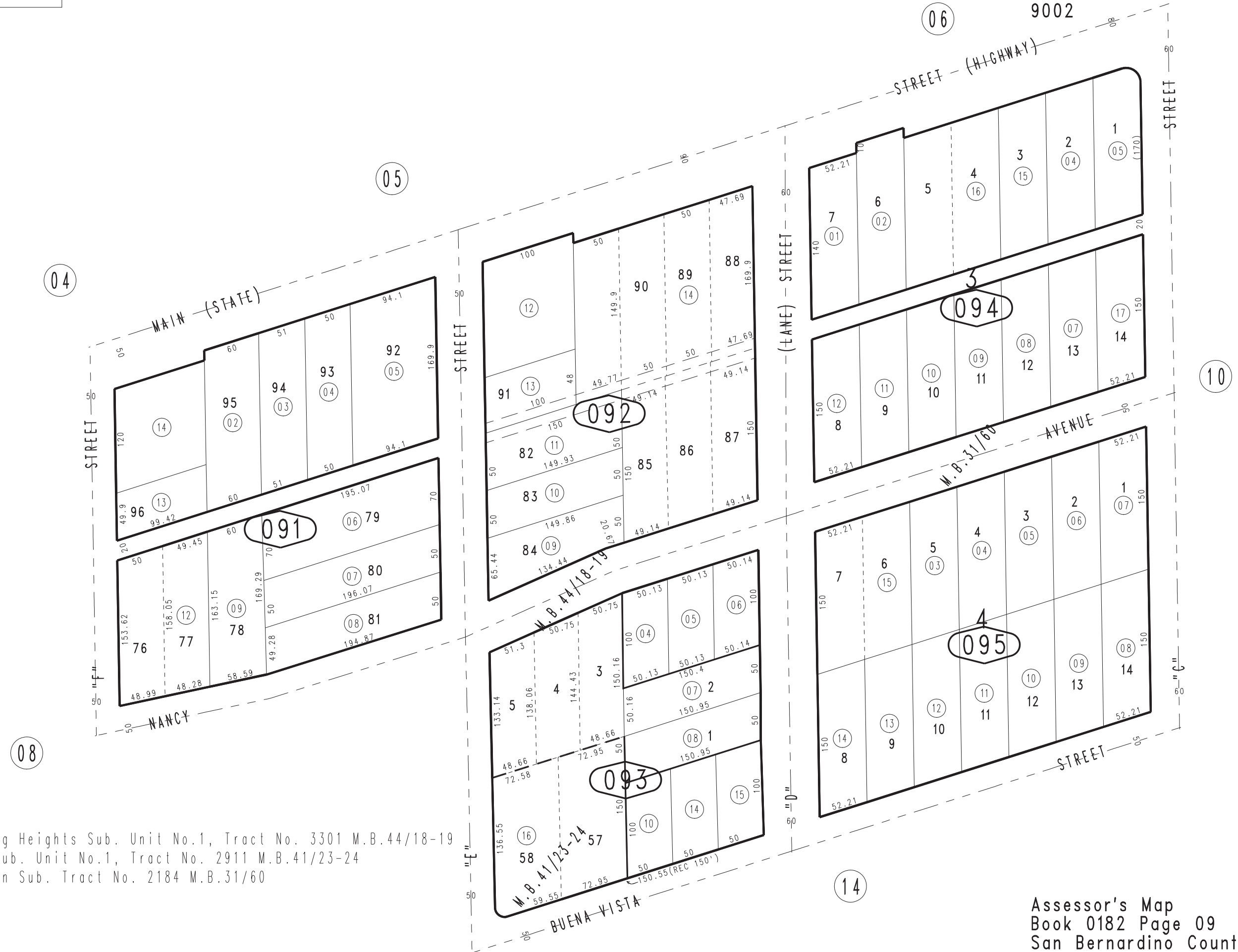


THIS MAP IS FOR THE PURPOSE
OF AD VALOREM TAXATION ONLY.

Ptn. S.1/2 Sec.1, T.9N., R.2W., S.B.B.&M.

City Of Barstow
Tax Rate Area
9002

0182 - 09



Ptn. Foglesong Heights Sub. Unit No.1, Tract No. 3301 M.B.44/18-19
Ptn. Permel Sub. Unit No.1, Tract No. 2911 M.B.41/23-24
Ptn. Henderson Sub. Tract No. 2184 M.B.31/60

October 2003

Assessor's Map
Book 0182 Page 09
San Bernardino County

REVISED
04/27/10 RM
05/18/12 BK-MC