

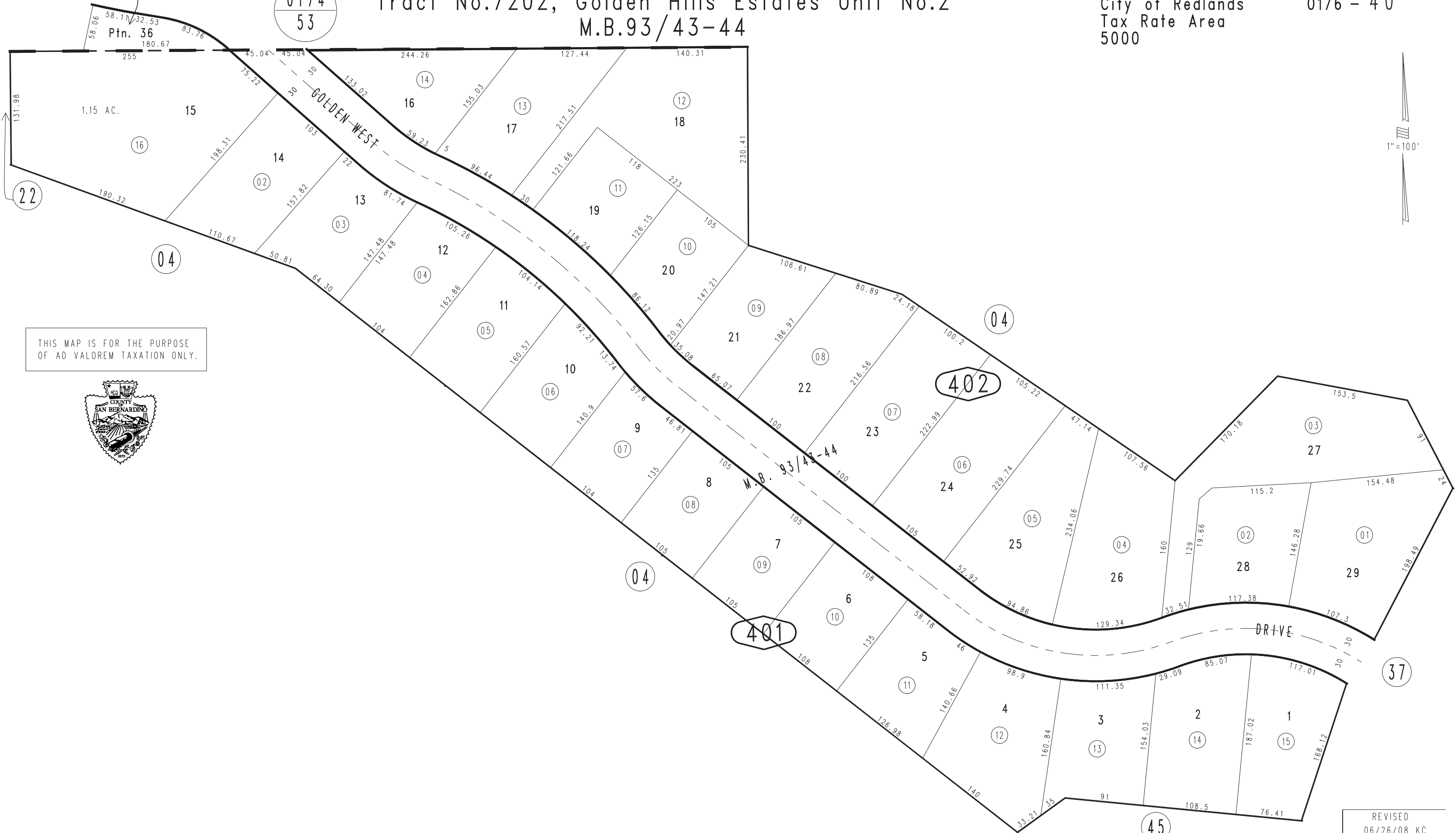
M.B. 266/54-58

0174
53

Tract No.7202, Golden Hills Estates Unit No.2 M.B.93/43-44

City of Redlands
Tax Rate Area
5000

0176 - 40



THIS MAP IS FOR THE PURPOSE
OF AD VALOREM TAXATION ONLY.



Ptn. Tract No. 15040, M.B. 266/54-58

October 2003

Ptn. N.E.1/4, Sec. 1
T.2S., R.3W.

Assessor's Map
Book 0176 Page 40
San Bernardino County

REVISED
06/26/08 KC
01/02/09 GW