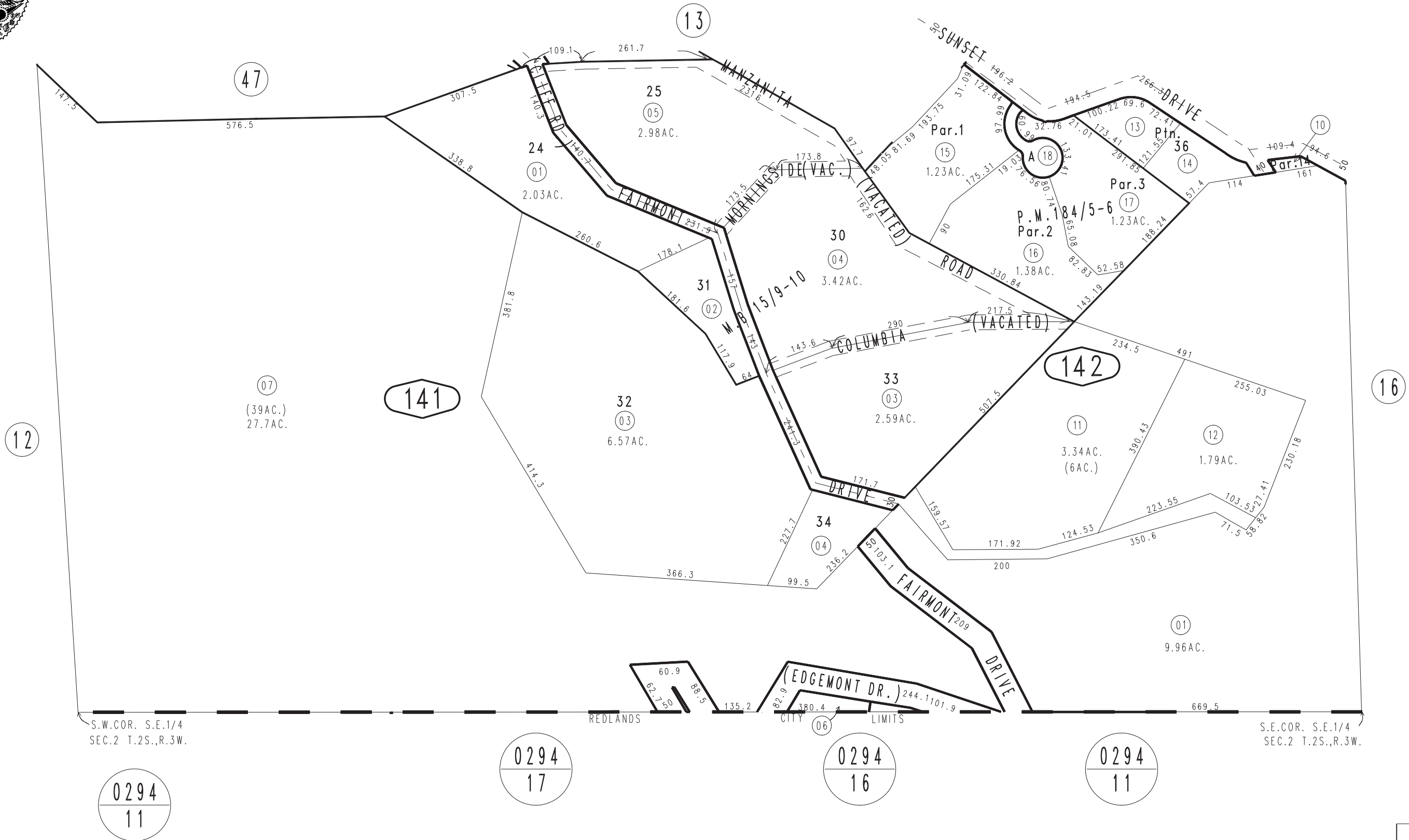


THIS MAP IS FOR THE PURPOSE  
OF AD VALOREM TAXATION ONLY.

Ptn. S.E.1/4 Sec.2, T.2S.,R.3W., S.B.B.&M.

City of Redlands  
Tax Rate Area  
5000

0176 - 14



October 2003

Parcel Map No.14842, P.M.184/5-6  
Ptn. Johnson's Sub. M.B.15/9-10

Assessor's Map  
Book 0176 Page 14  
San Bernardino County

REVISED  
05/16/12 BK-MC