

THIS MAP IS FOR THE PURPOSE  
OF AD VALOREM TAXATION ONLY.

Ptn. Johnson's Sub.  
M.B.15/9-10

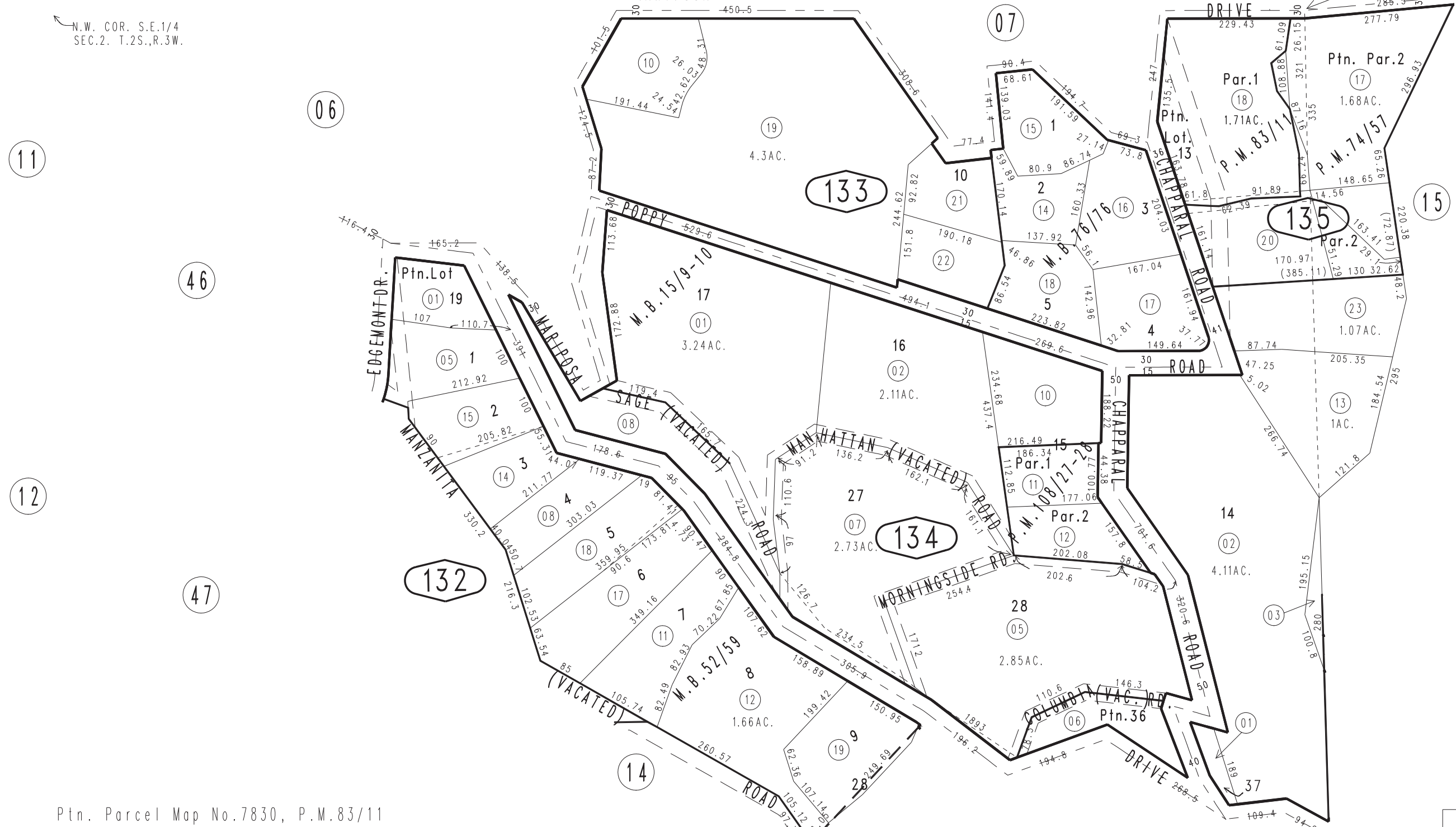
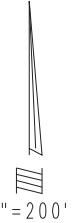
City of Redlands  
Tax Rate Area  
5000

0176 - 13



N.W. COR. S.E.1/4  
SEC.2. T.2S.,R.3W.

N.E.COR. S.E.1/4  
SEC.2. T.2S.,R.3W.



Ptn. Parcel Map No.7830, P.M.83/11  
Ptn. Parcel Map No.7385, P.M.74/57  
Parcel Map No.9153, P.M.108/27-28  
Tract No.5976, Mariposa Park, M.B.76/76  
Tract No.4117 Valley View Subdivision M.B.52/59

Ptn. S.W.1/4 Sec. 1  
Ptn. S.E.1/4 Sec. 2  
T.2S., R.3W.

Assessor's Map  
Book 0176 Page 13  
San Bernardino County

REVISED  
01/05/09 GW