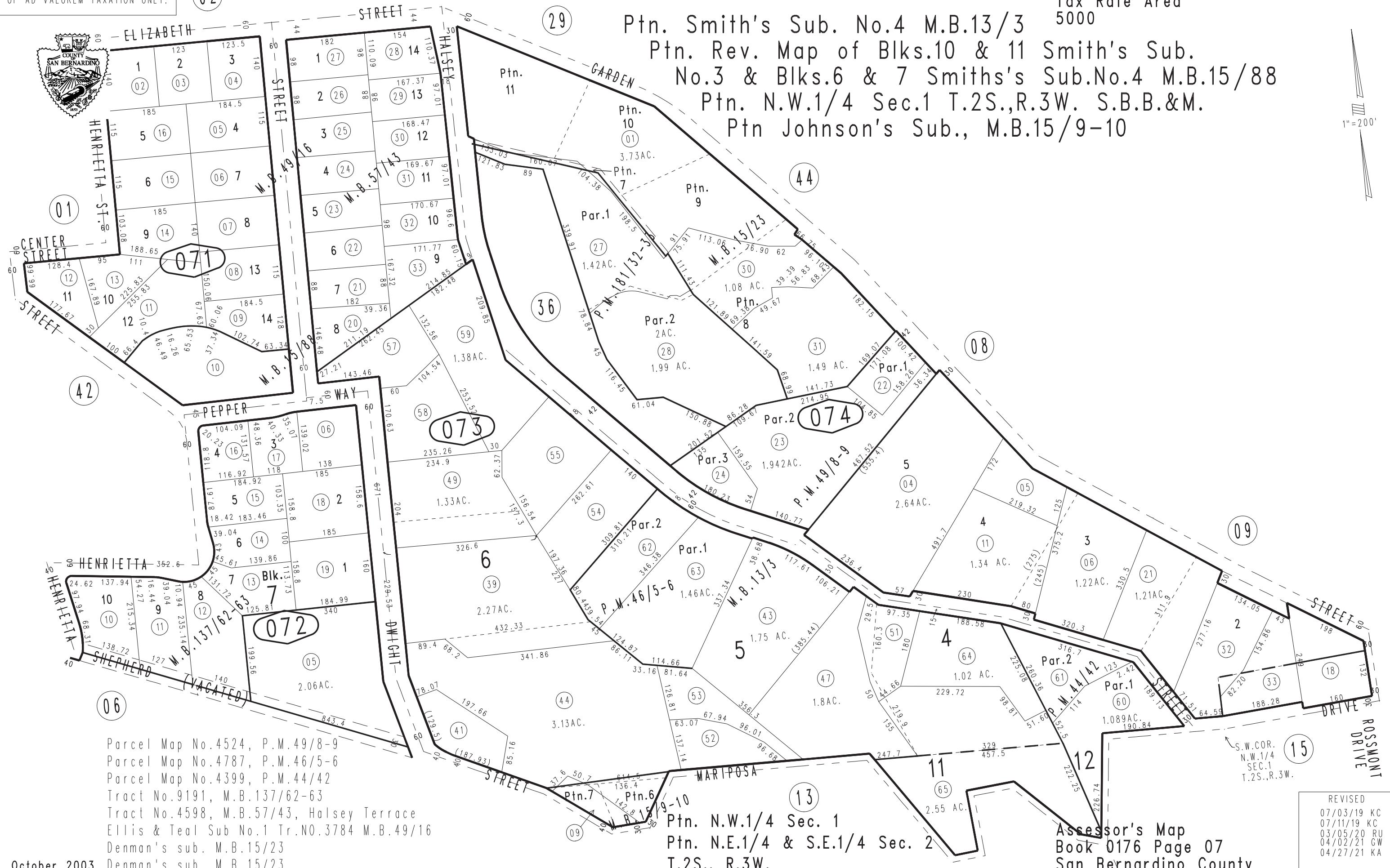


THIS MAP IS FOR THE PURPOSE OF AD VALOREM TAXATION ONLY.

City of Redlands  
Tax Rate Area  
5000

0176 - 07



Ptn. Smith's Sub. No.4 M.B.13/3  
Ptn. Rev. Map of Blks.10 & 11 Smith's Sub.  
No.3 & Blks.6 & 7 Smith's Sub.No.4 M.B.15/88  
Ptn. N.W.1/4 Sec.1 T.2S.,R.3W. S.B.B.&M.  
Ptn Johnson's Sub., M.B.15/9-10

1"=200'

Parcel Map No.4524, P.M.49/8-9  
Parcel Map No.4787, P.M.46/5-6  
Parcel Map No.4399, P.M.44/42  
Tract No.9191, M.B.137/62-63  
Tract No.4598, M.B.57/43, Halsey Terrace  
Ellis & Teal Sub No.1 Tr.NO.3784 M.B.49/16  
Denman's sub. M.B.15/23  
Denman's sub. M.B.15/23

October 2003

Ptn. N.W.1/4 Sec. 1  
Ptn. N.E.1/4 & S.E.1/4 Sec. 2  
T.2S., R.3W.

Assessor's Map  
Book 0176 Page 07  
San Bernardino County

REVISED  
07/03/19 KC  
07/11/19 KC  
03/05/20 RU  
04/02/21 GW  
04/27/21 KA