

THIS MAP IS FOR THE PURPOSE  
OF AD VALOREM TAXATION ONLY.

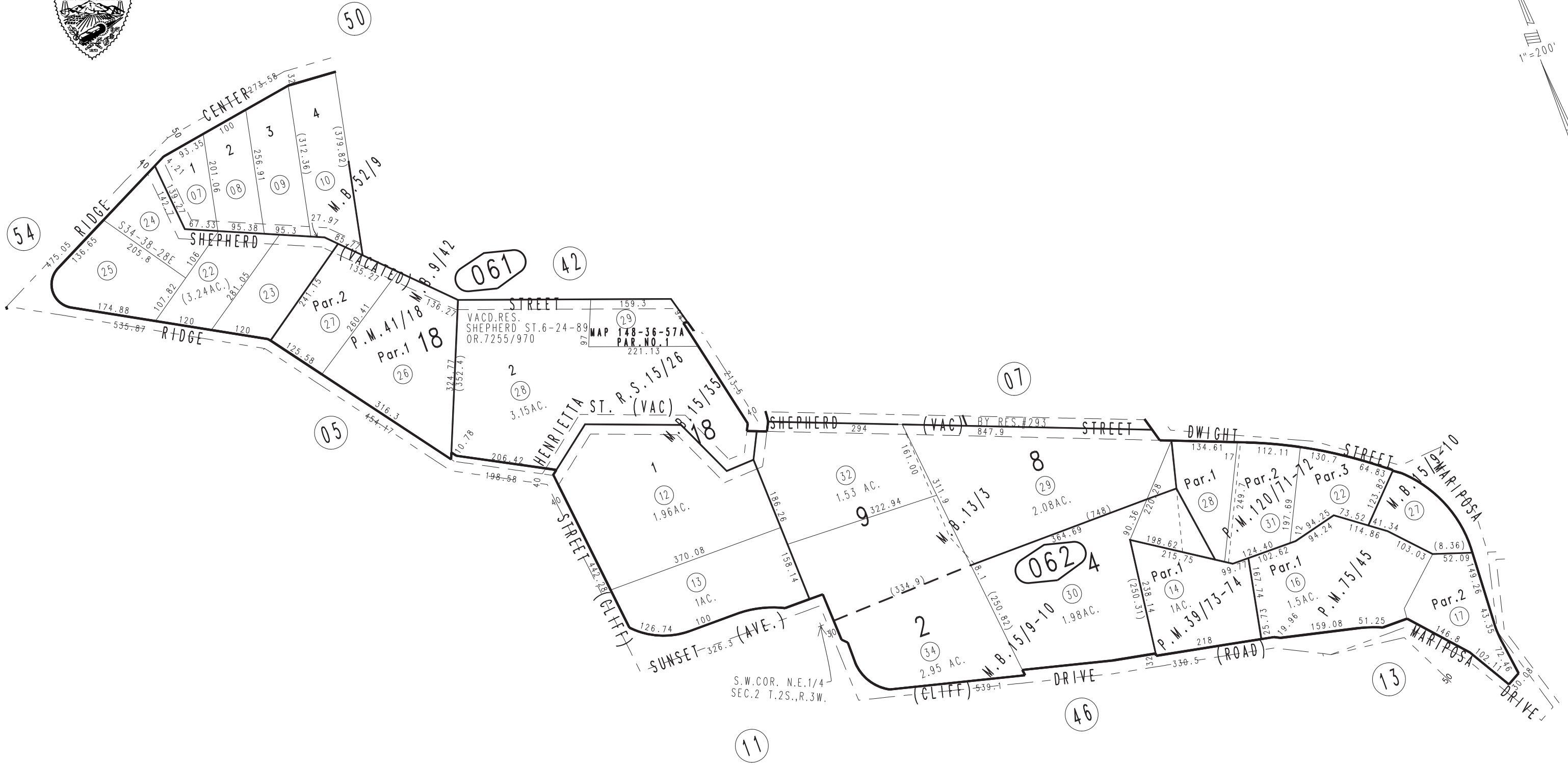


Ptn. Smith's Sub.No.2 M.B.9/42  
Ptn. Smith's Sub.No.4 M.B.13/3  
Ptn. Johnson's Sub. M.B.15/9-10

City of Redlands  
Tax Rate Area  
5000

0176 - 06

1"=200'



Parcel Map No.8360, P.M.120/71-72  
Parcel Map No.6498, P.M.75/45  
Parcel Map No.4153, P.M.41/18  
Ptn. Winter View Heights, Unit No.1, Tract No. 4057, M.B.52/9  
Ptn. Smith's Sub.No.5 M.B.15/35  
Parcel Map No.3691, P.M.39/73-74

Ptn. N.W.1/4, N.E.1/4 & S.E.1/4  
Sec. 2 T.2S., R.3W.

Assessor's Map  
Book 0176 Page 06  
San Bernardino County

REVISED  
05/16/12 BK-MC  
07/17/14 GW