

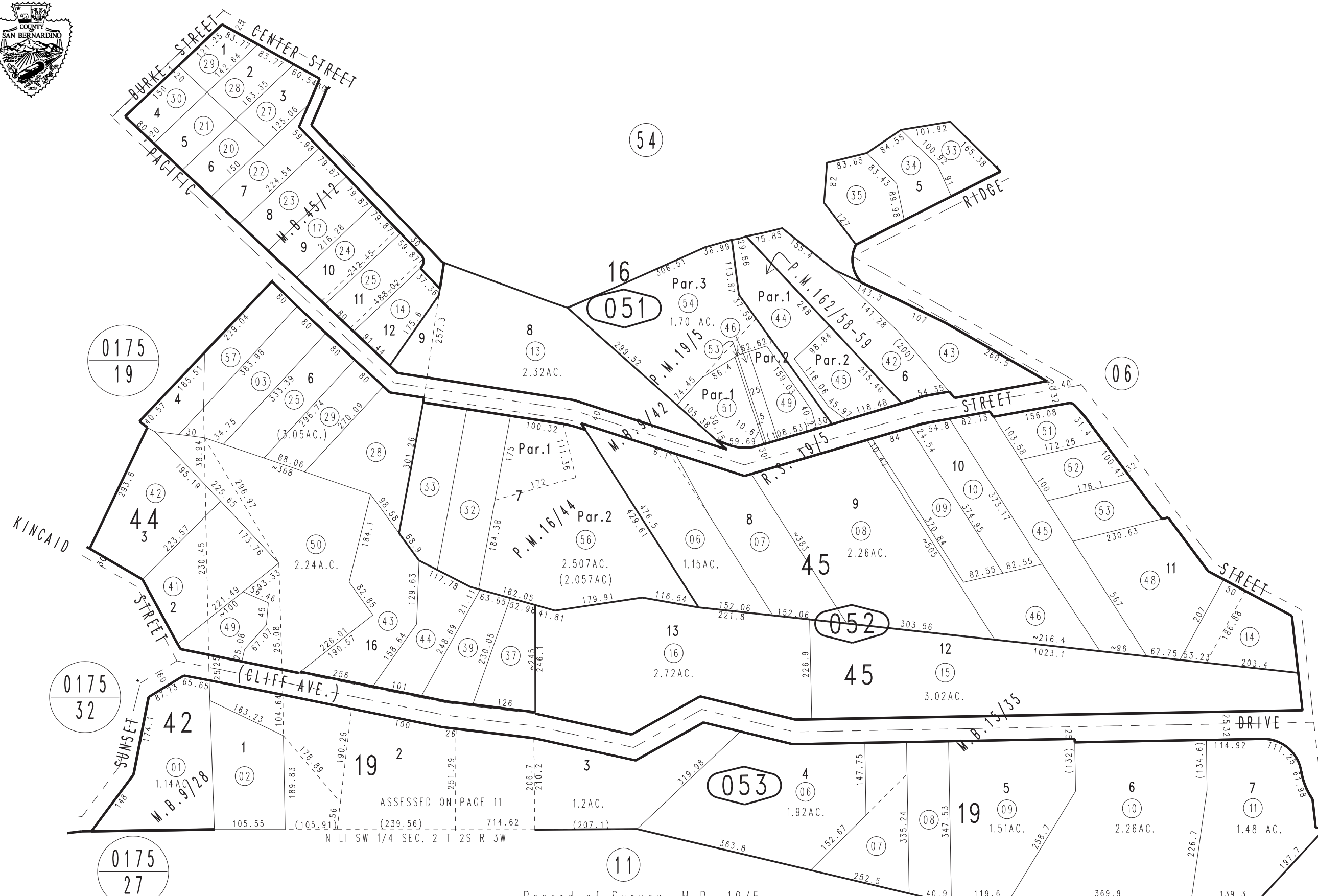
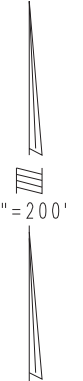
THIS MAP IS FOR THE PURPOSE OF AD VALOREM TAXATION ONLY.

0175  
20

# Ptn. Smith's Sub. No.2 M.B. 9/42

City of Redlands  
Tax Rate Area  
5000

0176 - 05



0175  
19

0175  
32

0175  
27

October 2003

Pacific Heights Tr.No. 3314 M.B.45/12  
Ptn. Smith's Sub.No.5 M.B.15/35  
Parcel Map No. 9 Redlands Heights M.B.9/28

Record of Survey, M.B. 19/5  
Parcel Map No.13900, P.M.162/58-59  
Parcel Map No.2236, P.M.19/5  
Parcel Map No.1950, P.M.16/44

Ptn. N.W.1/4, Sec. 2  
T.2S., R.3W.

Assessor's Map  
Book 0176 Page 05  
San Bernardino County

REVISED  
04/11/22 AP