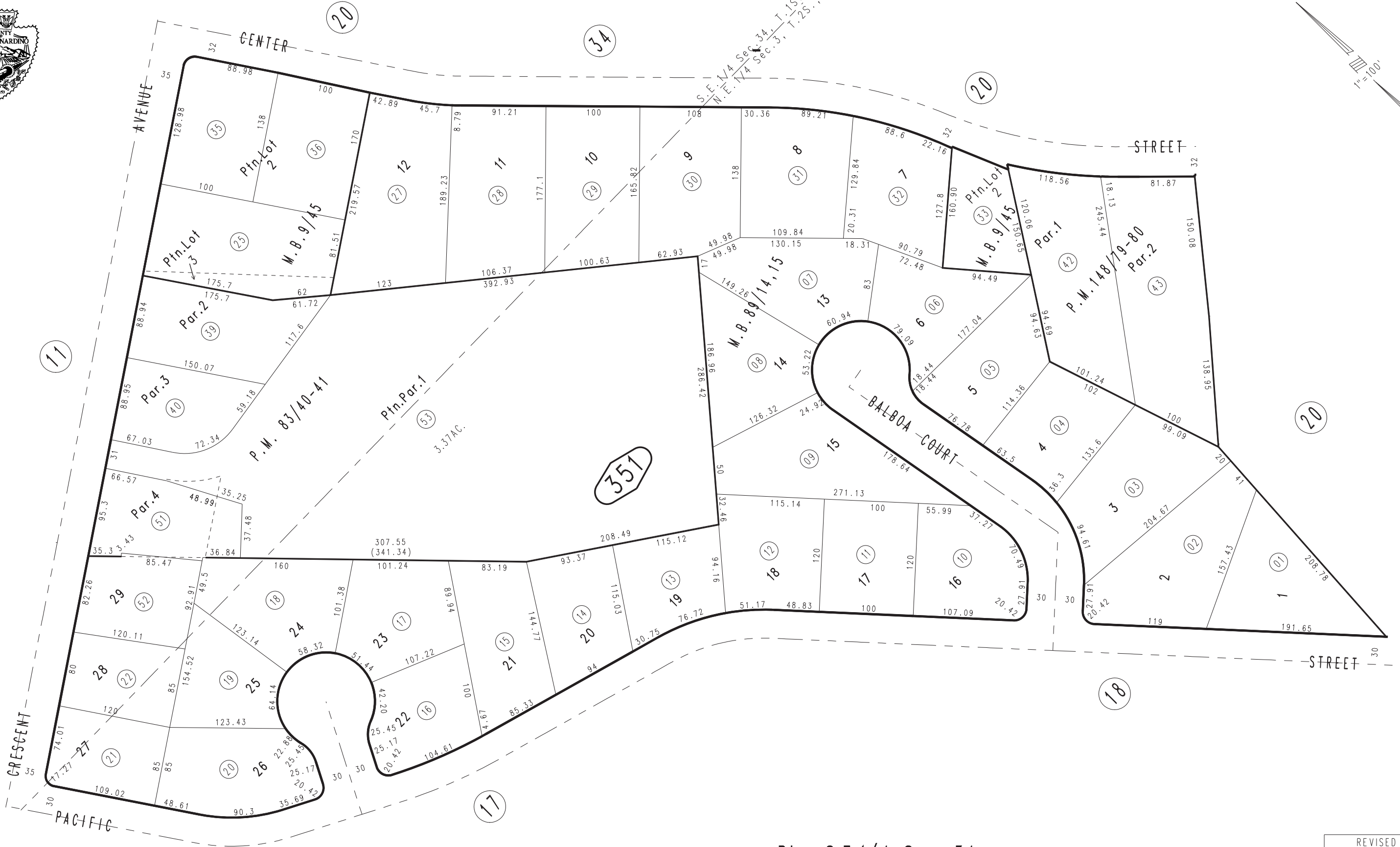


THIS MAP IS FOR THE PURPOSE OF AD VALOREM TAXATION ONLY.

Ptn. Sub. of Blk.51 Map 9 Redlands Heights M.B.9/45

City of Redlands
Tax Rate Area
5000

0175 - 35



October 2003

Parcel Map No.10428, P.M.148/79-80
Parcel Map No.7685, P.M.83/40-41
Tract No.7006, M.B.89/14-15

Ptn. S.E.1/4 Sec. 34
T.1S., R.3W.
Ptn. N.E.1/4 Sec. 3
T.2S., R.3W.

Assessor's Map
Book 0175 Page 35
San Bernardino County

REVISED
05/08/12 GW
07/05/12 GW-MC