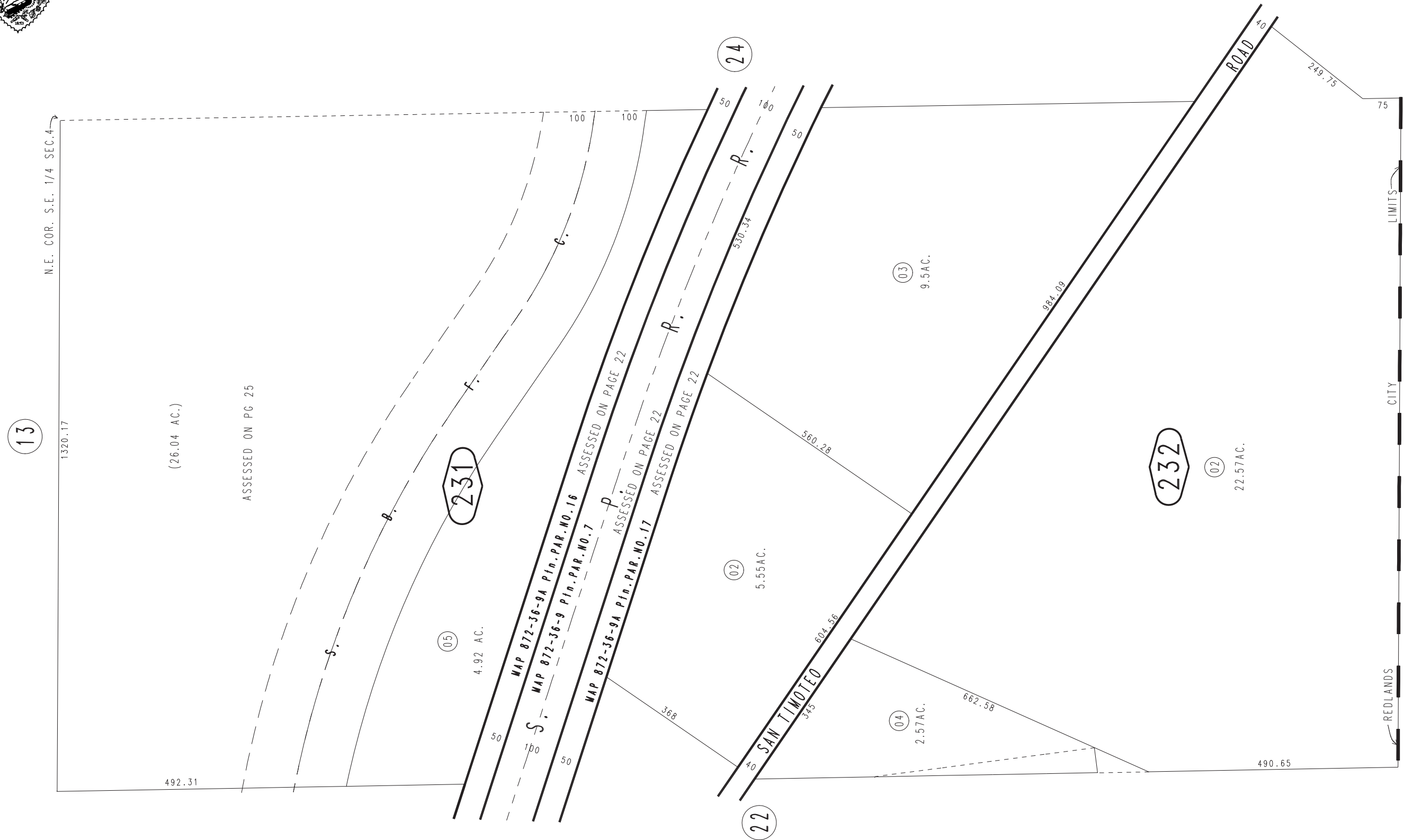
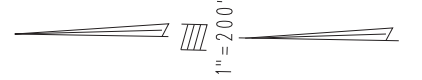


THIS MAP IS FOR THE PURPOSE
OF AD VALOREM TAXATION ONLY.

Ptn. S.E.1/4 Sec.4 T.2S.,R.3W., S.B.B.&M.

City of Redlands
Tax Rate Area
5000

0175 - 23



0294
08

REVISED
07/20/06 LH
08/04/06 LH
03/19/08 LH