

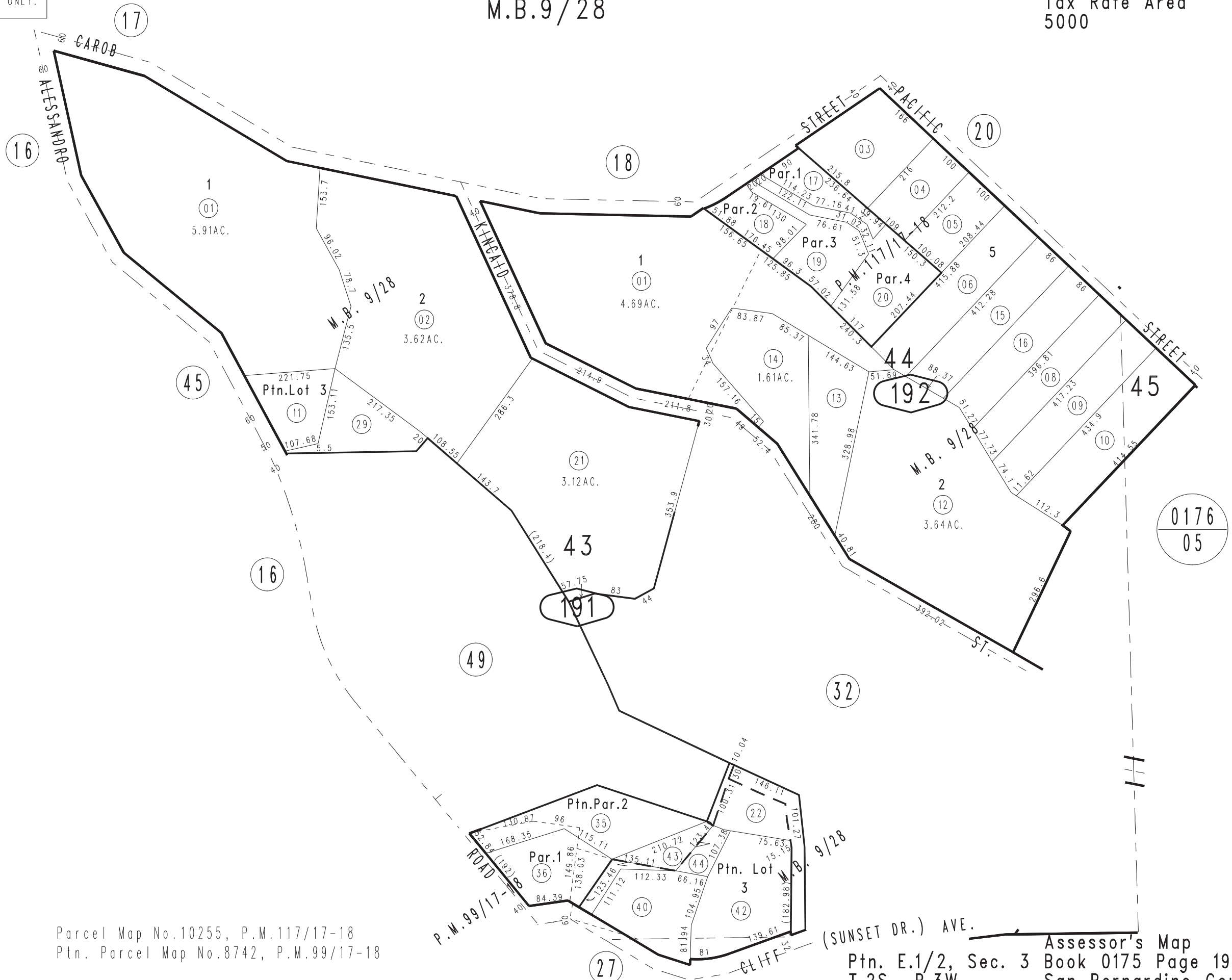
THIS MAP IS FOR THE PURPOSE OF AD VALOREM TAXATION ONLY.



Ptn. Map No.9 Redlands Heights M.B.9/28

City of Redlands
Tax Rate Area
5000

0175 - 19



Parcel Map No.10255, P.M.117/17-18
Ptn. Parcel Map No.8742, P.M.99/17-18

October 2003

(SUNSET DR.) AVE.
Ptn. E.1/2, Sec. 3
T.2S., R.3W.

Assessor's Map
Book 0175 Page 19
San Bernardino County

REVISED
02/27/09 LH
12/21/10 GW
07/03/12 GW-MC