

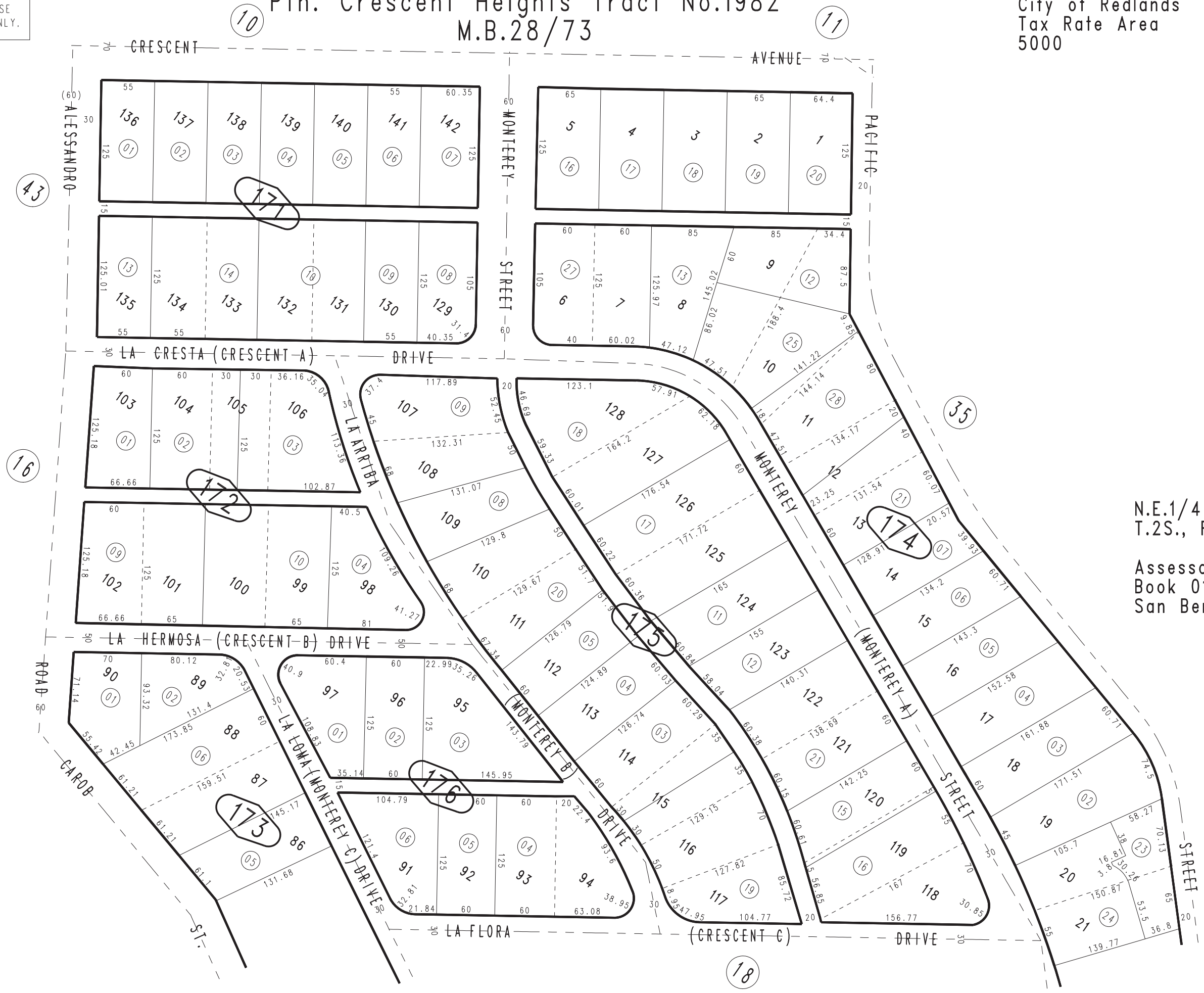
THIS MAP IS FOR THE PURPOSE OF AD VALOREM TAXATION ONLY.



Ptn. Crescent Heights Tract No.1982 M.B.28/73

City of Redlands
Tax Rate Area
5000

0175 - 17



N.E.1/4 Sec. 3
T.2S., R.3W.

Assessor's Map
Book 0175 Page 14
San Bernardino County

REVISED
09/18/20 KC