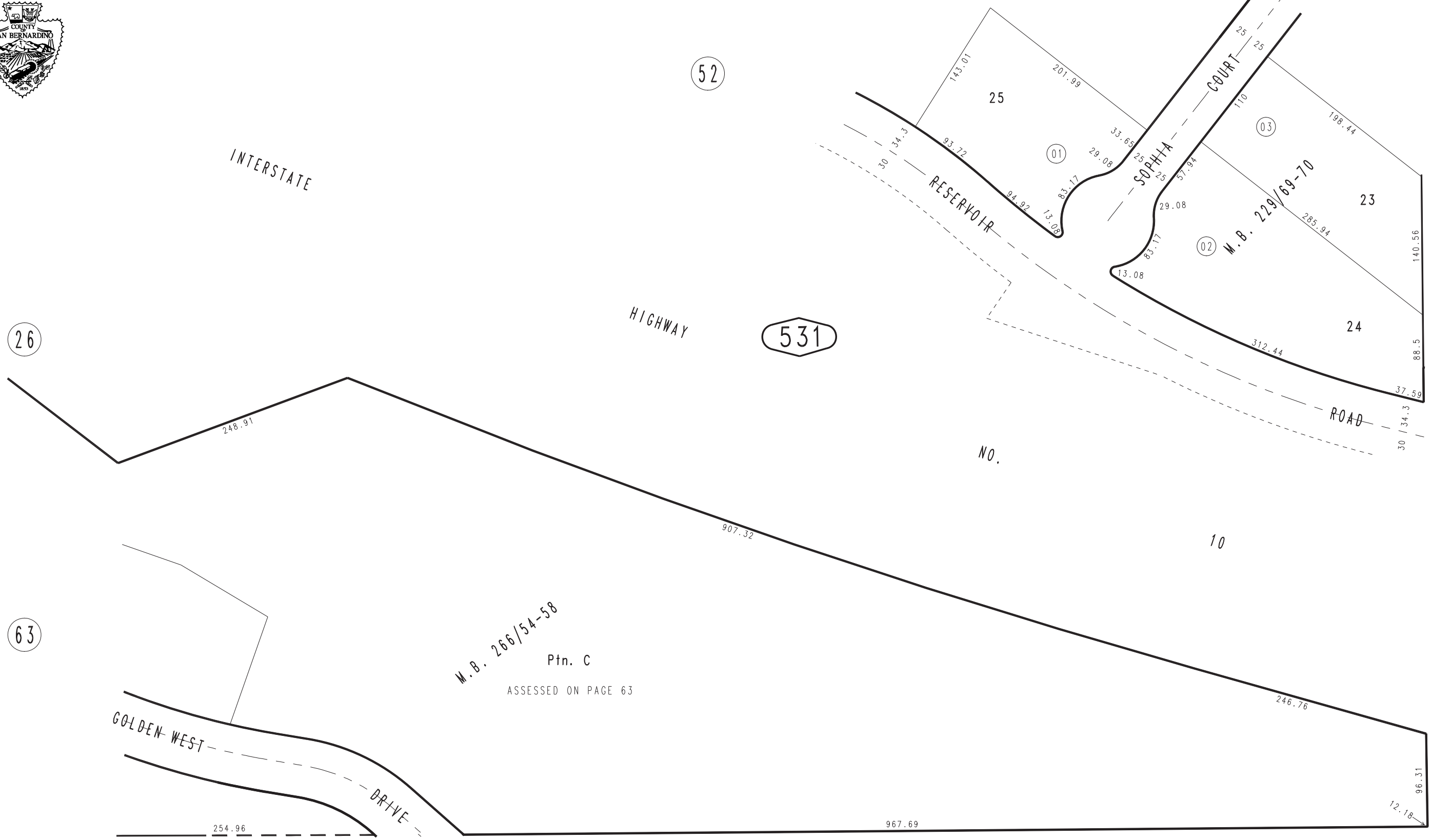


THIS MAP IS FOR THE PURPOSE  
OF AD VALOREM TAXATION ONLY.

Ptn. S.W.1/4 S.E.1/4 Sec.36, T.1S.,R.3W., S.B.B.&M.

City of Redlands  
Tax Rate Area  
5000

0174 - 53



M.B. 266/54-58  
Ptn. C  
ASSESSED ON PAGE 63

0176  
40

0176  
04

Ptn. Tract No. 15040, M.B. 266/54-58  
Ptn. Tract No. 10082, M.B. 145/40-41, Amending Map M.B. 229/69-70

Assessor's Map  
Book 0174 Page 53  
San Bernardino County

REVISED  
01/04/10 LH  
05/16/12 BK-MC