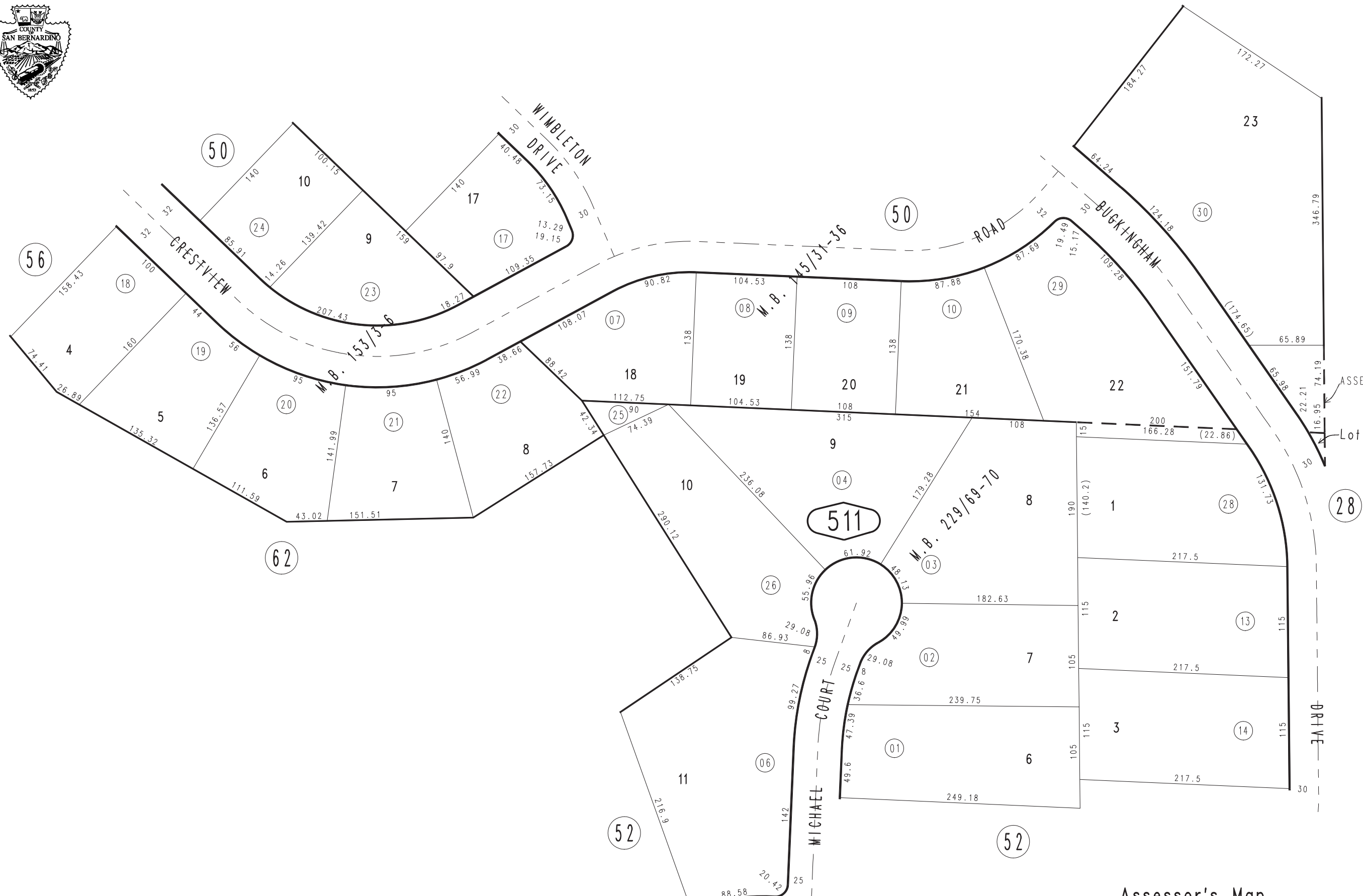


THIS MAP IS FOR THE PURPOSE  
OF AD VALOREM TAXATION ONLY.

# Ptn. Tract No. 10143 M.B. 145/31-36

City of Redlands  
Tax Rate Area  
5000

0174 - 51



ASSESSED ON PAGE 28

Lot A

January 2004

Ptn. Tract No. 10602, M.B. 153/3-6  
Ptn. Tract No. 10082, M.B. 145/40-41, Amending Map, M.B. 229/69-70

Ptn. S.E.1/4 Sec.36  
T.1S.,R.3W.

Assessor's Map  
Book 0174 Page 51  
San Bernardino County

REVISED