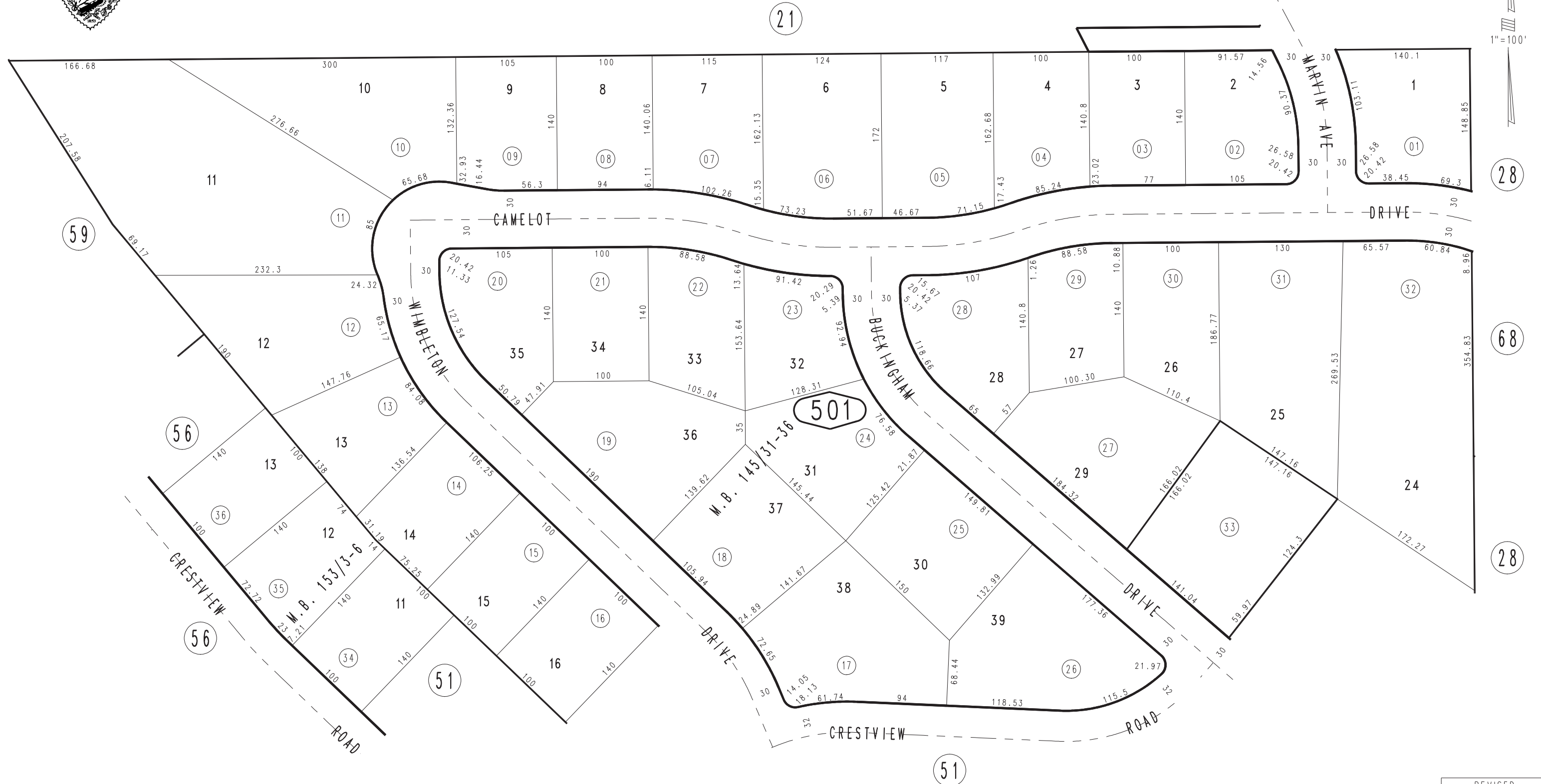


THIS MAP IS FOR THE PURPOSE  
OF AD VALOREM TAXATION ONLY.

Ptn. W.1/2, S.E.1/4, Sec.36, T.1S.,R.3W., S.B.B.&M.

City of Redlands  
Tax Rate Area  
5000

0174 - 50



January 2004

Ptn. Tract No. 10602, M.B. 153/3-6  
Ptn. Tract No. 10143, M.B. 145/31-36

Assessor's Map  
Book 0174 Page 50  
San Bernardino County

REVISED  
10/30/24 KC-MC