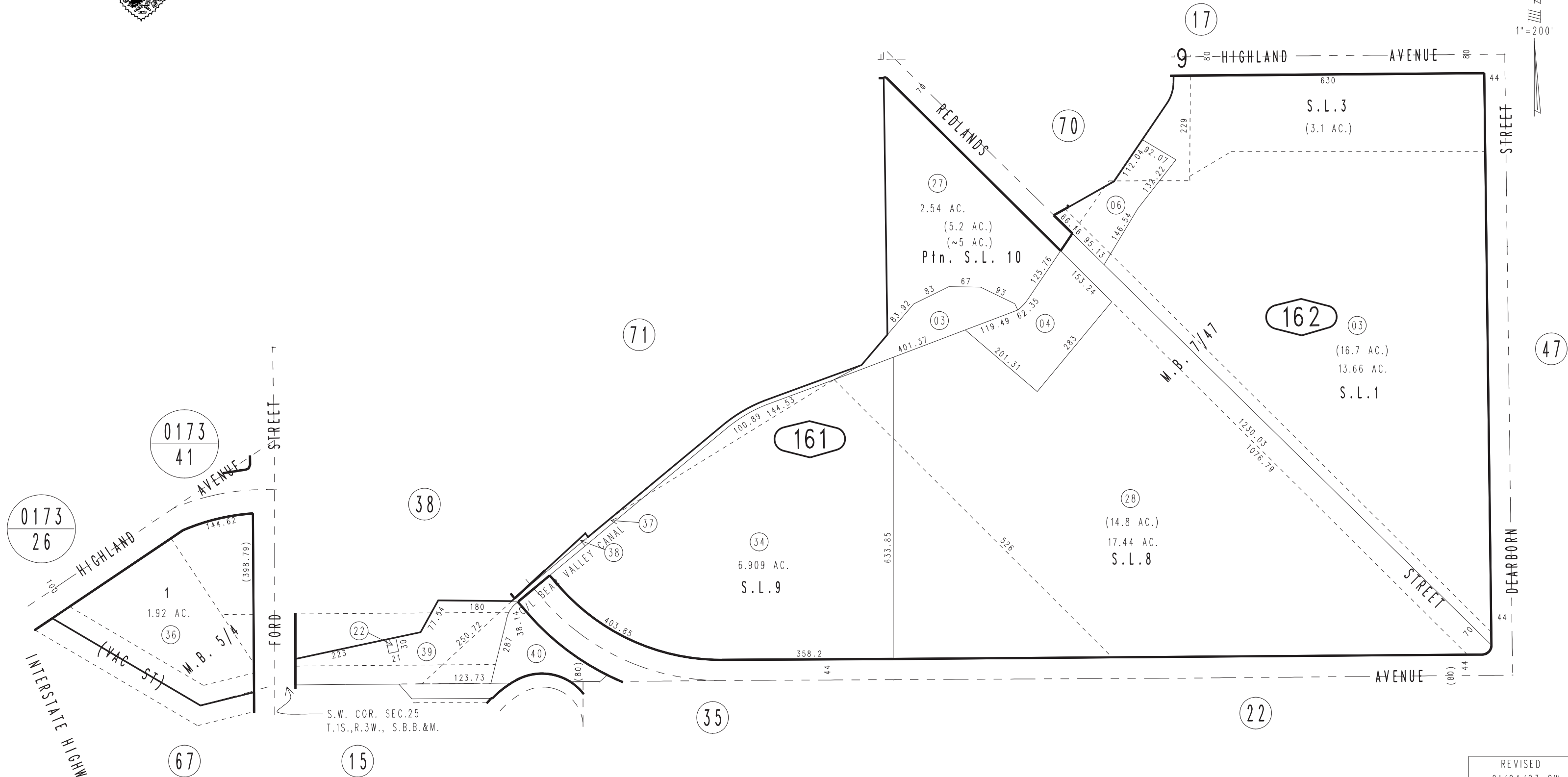


THIS MAP IS FOR THE PURPOSE  
OF AD VALOREM TAXATION ONLY.

# Ptn. Add. No. 1, Second Preliminary Map of Redlands, M.B. 5/4 Ptn. East Redlands, M.B. 7/47

City of Redlands  
Tax Rate Area  
5000

0174 - 16



0173  
26

0173  
41

INTERSTATE HIGHWAY 10

January 2004

S.W. COR. SEC. 25  
T.1S., R.3W., S.B.B.&M.

Ptn. S.W.1/4, Sec. 25  
T.1S., R.3W.

Assessor's Map  
Book 0174 Page 16  
San Bernardino County

REVISED  
01/04/23 GW