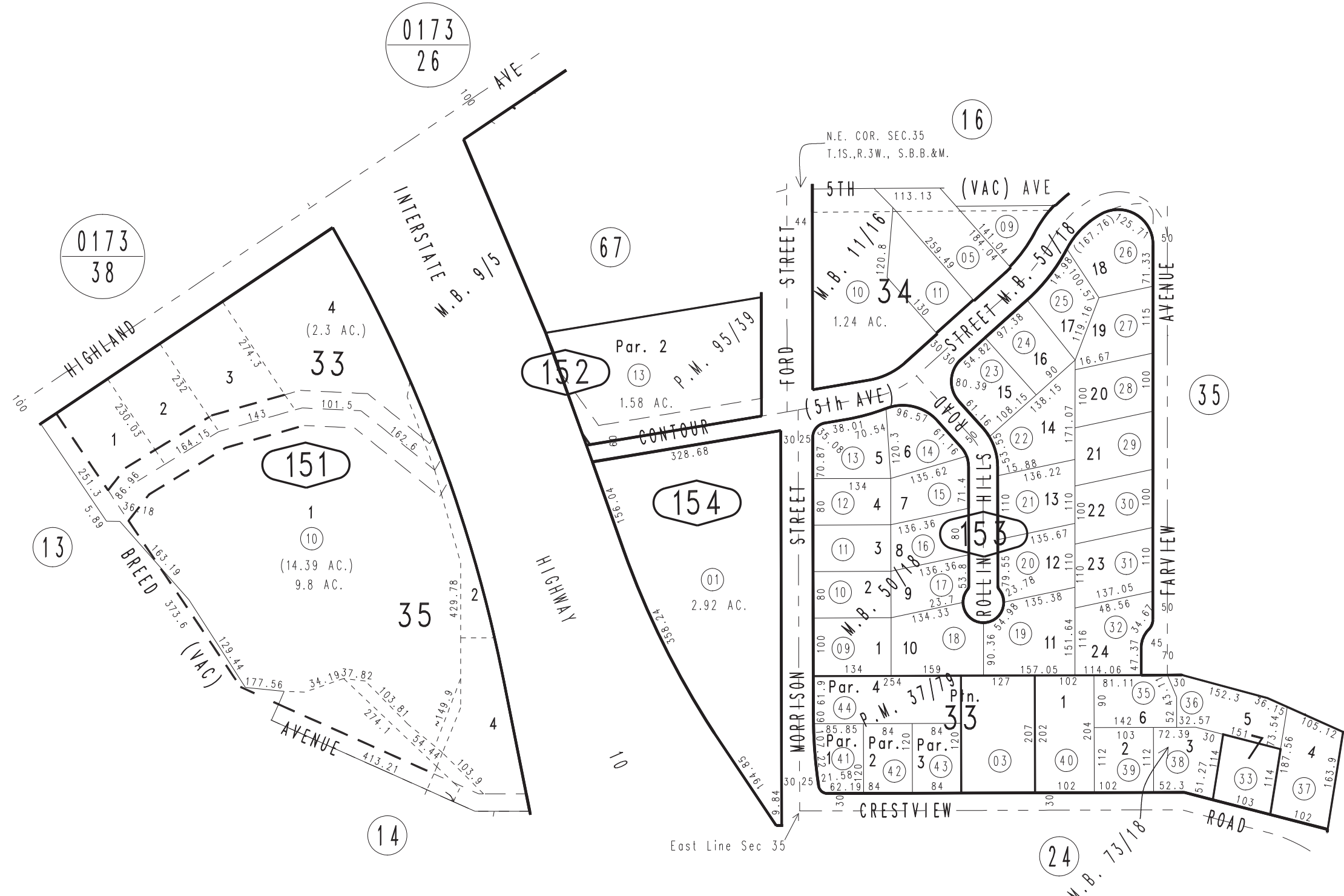


THIS MAP IS FOR THE PURPOSE  
OF AD VALOREM TAXATION ONLY.

Ptn. Redlands Heights, Map No. 8, M.B. 9/5  
Ptn. Redlands Heights, (Craft's Map), M.B. 11/16

City of Redlands  
Tax Rate Area  
5000

0174 - 15



Ptn. Parcel Map No. 9086, P.M. 95/39  
Parcel Map No. 3229, P.M. 37/79  
Tract No. 5626, M.B. 73/18  
Rolling Hills Sub., Tract No. 3837 M.B. 50/18

January 2004

Ptn. N.E.1/4, Sec. 35  
T.1S., R.3W.

Assessor's Map  
Book 0174 Page 15  
San Bernardino County

REVISED  
04/27/11 LH-MC  
05/19/12 RU-MC