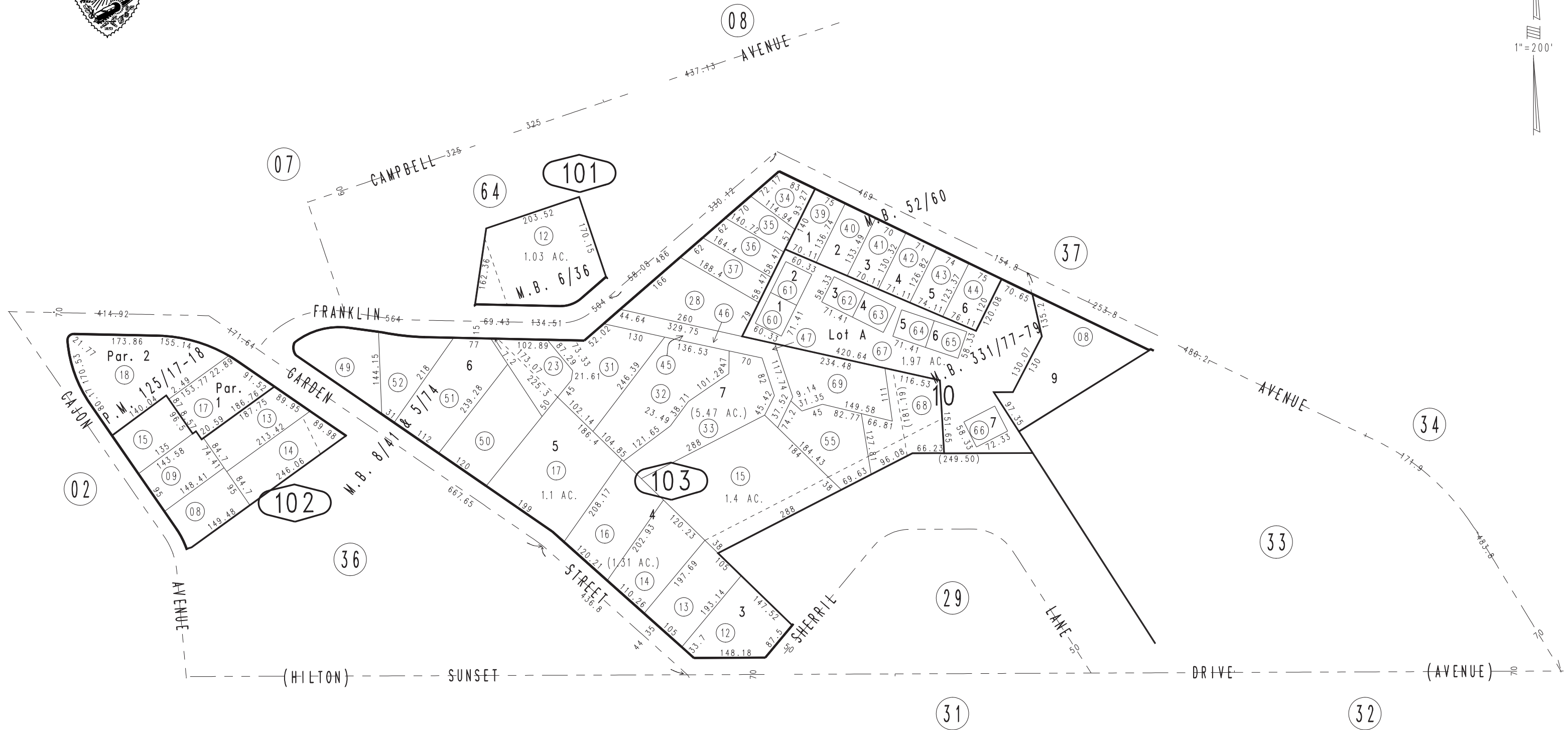


THIS MAP IS FOR THE PURPOSE  
OF AD VALOREM TAXATION ONLY.

Ptn. Redlands Heights, Map No. 1, M.B. 8/41 & 5/74  
Ptn. Redlands Heights, Map No. 2, M.B. 6/36

City of Redlands  
Tax Rate Area  
5000

0174 - 10



January 2004

Tract No. 13649, M.B. 331/77-79  
Parcel Map No. 6153, P.M. 125/17-18  
Franklin Estates, Tract No. 4125, M.B. 52/60

Assessor's Map  
Book 0174 Page 10  
San Bernardino County

REVISED  
08/26/21 RU-MC